

# TCM-230K Series Coriolis Mass Flow Meter

## Benefits:

- > High resistance against corrosion and abrasion
- > Minimal pressure effects
- > Lower maintenance costs
- > Fast Return on Investment

## Advantages:

- > Robust for a long service life
- > Thick, seamless measurement tubes for increased safety

## Specifications:

<b>Mass Flow Rate (max.)</b>	230,000 Kg/Hr, 8433 Lbs/Min
<b>Volumetric Flow Rate (max.)</b>	230,000 lph, 1012 gpm 34,700 Bbl/day
<b>Nominal Meter Size</b>	3-4"
<b>Pressure Rating</b>	100 bar, 1450 psi

## Accuracy:

**Basic Accuracy** =  $\pm 0.1\%$  of flow reading

**Zero Stability** =  $\pm 0.01\%$  of full scale, 23.0 kg/hr, 0.84 lbs/min

Basic accuracy  $\pm 0.10\%$  of flow rate + zero stability \* 100% flow rate. (Stated accuracy combines the effects of repeatability, linearity, and hysteresis.)

## Density:

**Density Accuracy:** Liquids:  $\pm 1.0 \text{ kg/m}^3$ ,  $\pm 0.001 \text{ g/cm}^3$

**Density Repeatability:**  $\pm 0.5 \text{ kg/m}^3$ ,  $\pm 0.0005 \text{ g/cm}^3$

**Density Range:** Up to  $2,500 \text{ kg/m}^3$ ,  $2.5 \text{ g/cm}^3$

## Temperature:

**Media Temperature Range:**  $-40$  to  $100^\circ\text{C}$ ,  $-40$  to  $212^\circ\text{F}$

**Temperature Accuracy:**  $\pm 1.0^\circ\text{C}$ ,  $\pm 0.5\%$  of reading, repeatability  $\pm 0.1\%$ .

## Process Pressure Effect\*:

**Mass Flow Accuracy:**  $\pm 0.001\%$  of rate per PSI\*\*

**Density Accuracy:**  $\pm 0.00003 \text{ g/cm}^3$  per PSI\*\*

\*TCE-8000 electronics offers pressure input to eliminate process pressure effect

\*\*1PSI = 0.06894 Bar

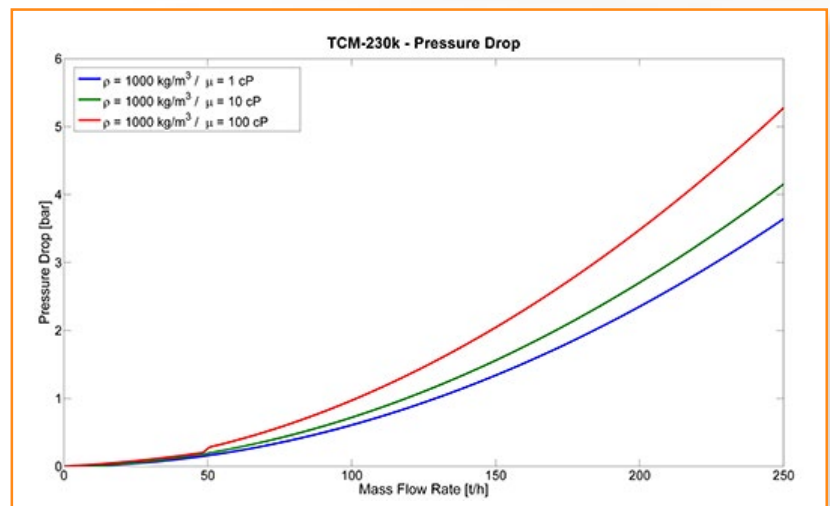
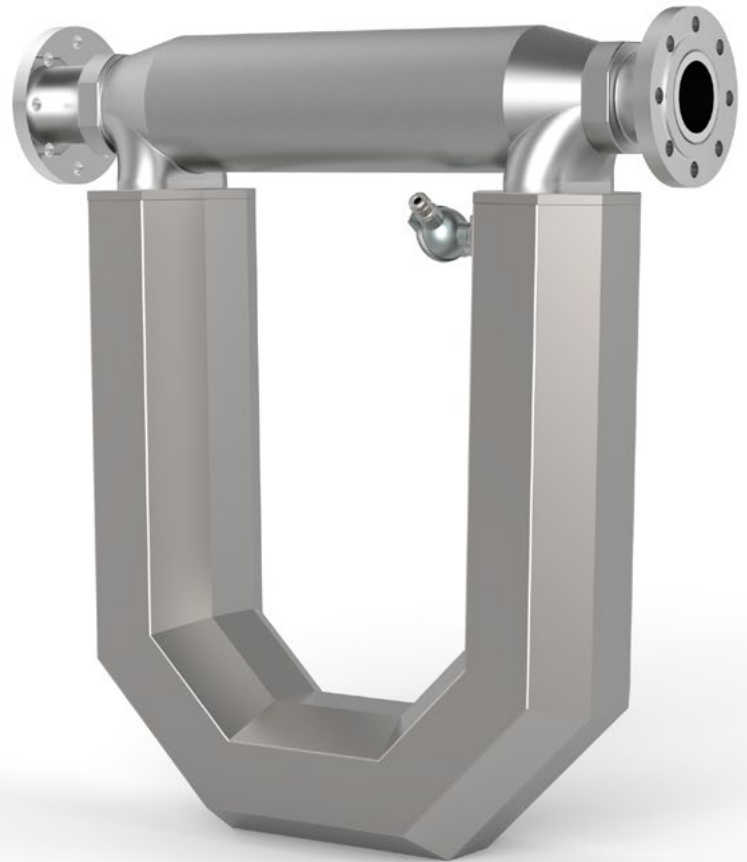
## Materials of Construction:

**Tubes:** 316L SS Seamless tubing

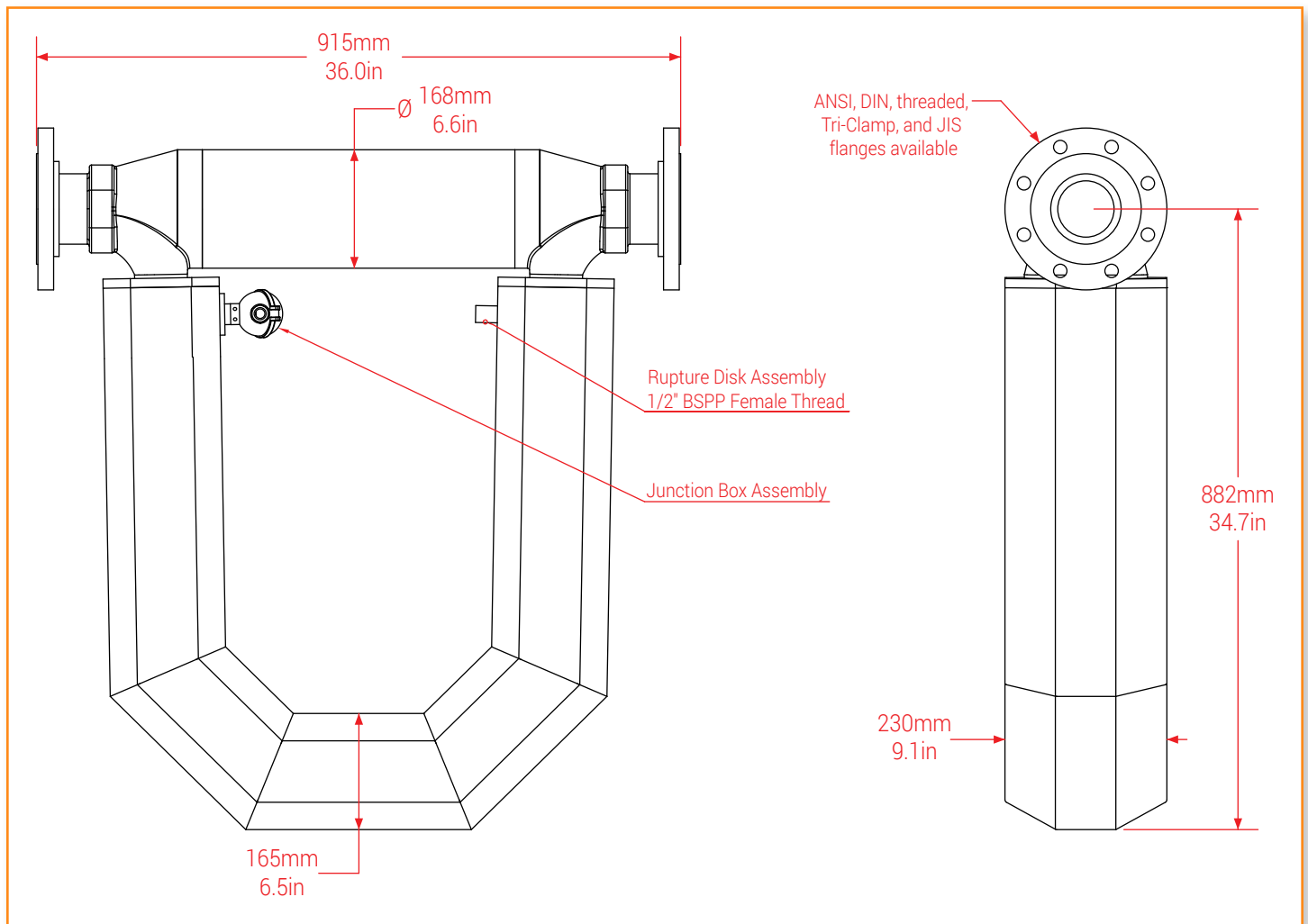
**Case:** 304 SS

**Casting:** CF3M (316 SS)

**Brazing Alloy:** BNi-2



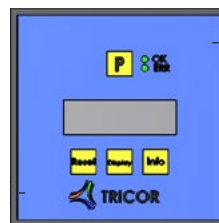
## Meter Dimensions:



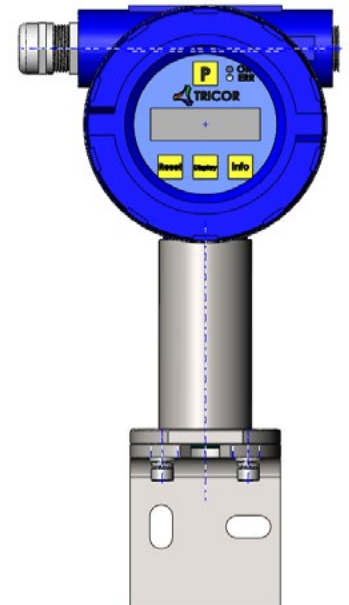
## Electronics:

The TCE-8000 transmitter offered with the TRICOR Coriolis mass flow meter is offered in 2 different mounting options:

### Panel Mount



### Remote Field Mount



## Ex Certifications - **Coming Soon!**

ATEX	Zone 1: Group IIB, T4 Zone 2: II 3G Ex nA IIC T4 Gc
IECEX	Zone 1: Group IIB, T4
CSA Ex	Class I, Division 1: Group C,D, T4



[www.tricorflow.com](http://www.tricorflow.com)

**N & S America:**  
AW-Lake Company  
8809 Industrial Drive  
Franksville, WI 53126 USA  
Tel.: 800-850-6110

**China:**  
TASI Flow China  
Rm. 2429, JinYuan Office Building, No. 36  
CN- BeiYuan Road, Beijing 100012  
P.R. CHINA  
Tel.: +86 10 520 037 38

**Rest of World:**  
KEM Koppers  
Liebigstraße 5  
85757 Karlsfeld, Germany  
Tel.: +49 (0)8131 59391-0