

SERVICE INSTRUCTION

RCS-2 Ribbon Cable Installation Procedure

Warning: Before troubleshooting, replacing, or repairing any board, be sure ALL power is OFF and proper lock-out / tag-out procedures have been followed.

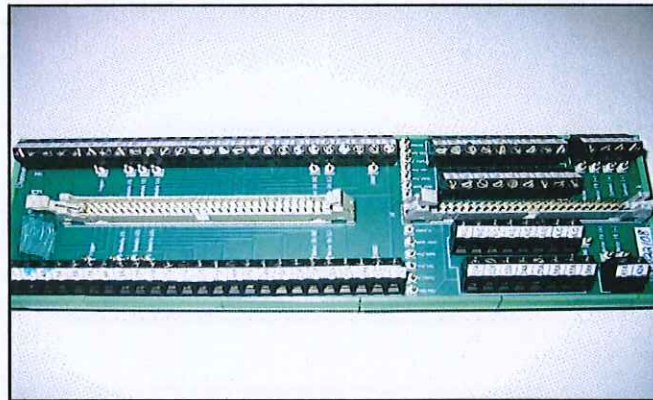


Figure 1: Break out board part number A10554-00.

Install ribbon cable part number A10586-XX into break out board making sure key on connector and ribbon cable is lined up correctly (see Figure 2). The red stripe should always align to pin #1.

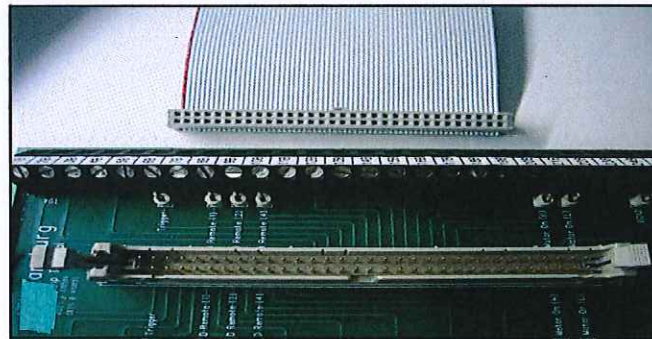


Figure 2: Ribbon cable installation alignment.

On cable part number A10587-XX (multi-colored ribbon cable) make sure to line up key on the connector with the ribbon cable. This cable needs special attention due to the fact that the connector on the break out board only has a side around the pins that is keyed (see Figure 3). There is no side on the opposite side of the connector and this allows the ribbon cable to be installed either way.

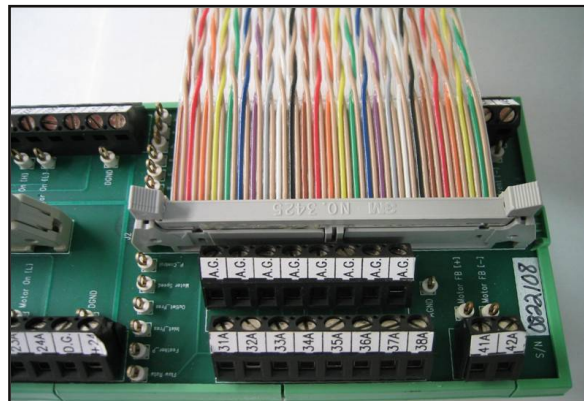
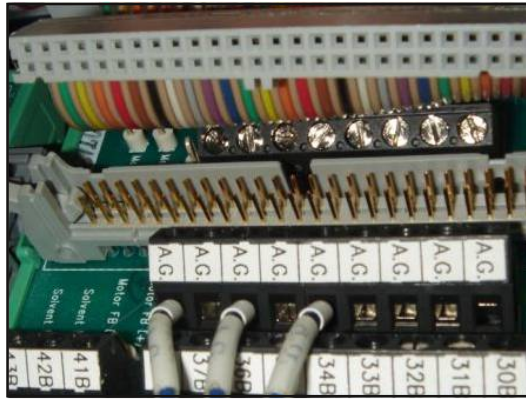
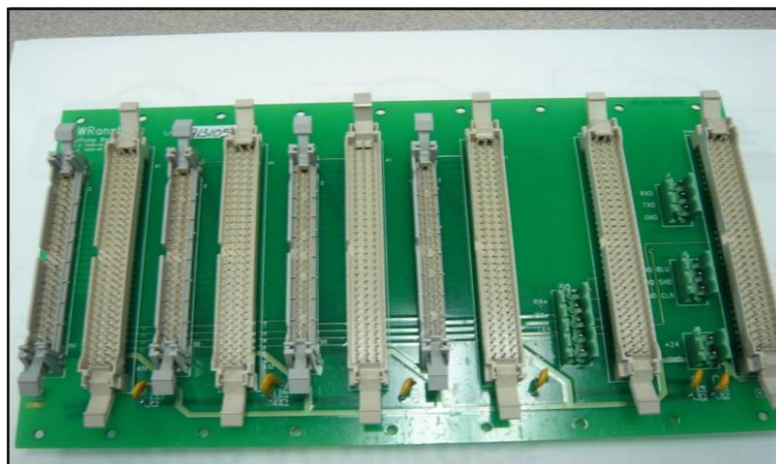
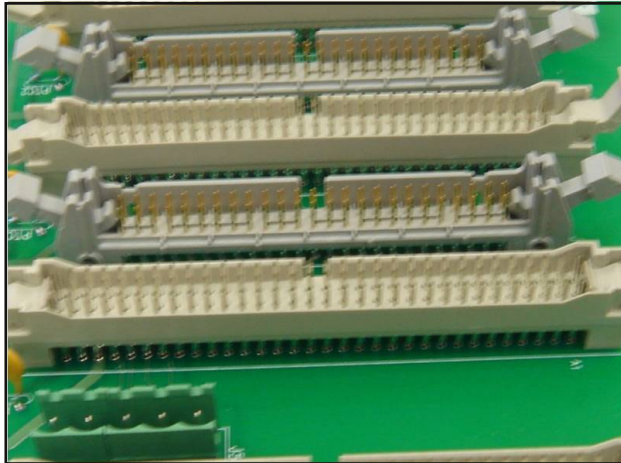


Figure 3: Multi-colored ribbon cable.

Ribbon Cable Install on RCS II Mother Board:



Mother Board Part #78816-00 1



Mother Board Part #78816-00 2

Special attention needs to be taken when installing cable part number A10586-XX (Figure 4) as this connector on the ribbon cable does not have a key and can be inserted into the connector either way. Note the red stripe on the ribbon cable should always be up when cable is installed.



Figure 4: Non-keyed cable.

On cable part number A10587-XX (multi-colored ribbon cable) (Figure 5) make sure to line up key on the connector with the ribbon cable. This cable needs special attention due to the fact that the connector on the mother board only has a side around the pins that is keyed. There is no side on the opposite side of the connector and this allows the ribbon cable to be installed either way.



Figure 5: Multi-colored cable.