

Operating Instructions and Spare parts list

# Vertical Axes ACR 03 (Pneumatic positioning operation)



## VERTICAL AXES ACR 03 (PNEUMATIC POSITIONING OPERATION)

### Connections:

1 Quick-release connection	203 181
Plastic hose - $\varnothing$ 8 / 6 mm	103 756
2 Socket housing	230 057
Plug insert	202 150
Cable	according to order

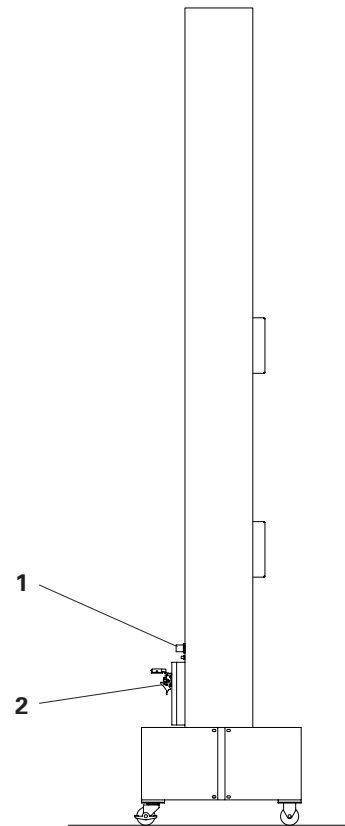


Figure 1

- Application:
- Positioning the powder guns in predetermined positions
  - Possibility for different positions because of more cylinders.
  - Possibility for more Z-Carriages (interlocked or separately adjustable)
  - Not suitable for reciprocating movements.
  - Fitting stationary guns possible.

Stroke: Dependent on the basic equipment, and number of positions / Z-Carriages.

Displacement: Takes place pneumatically, depending on the control pressure (adjustable).

Compressed air: 4-6 bar / < 1 Nm<sup>3</sup>/h (according to the number of position changes)

Control: Solenoid valve 230 VAC / 24 VDC (according to order).

Positioning feed-back 24 VDC.

Dimensions: according to ACR 1 - Basic equipment

Gun supports: Same fitting possibility as ACR

## VERTICAL AXES ACR 03 (PNEUMATIC POSITIONING OPERATION)

1	Column	—
2	Base frames	336 807
3	Panel - front	336 246
4	Panel - rear	336 254
6	Hand rail	360 015
9	Top plate - complete.	307 971
10	Support bracket - rear	307 904
11	Support bracket - front	317 470
12	Cable support	—
14	Y-Carriage - complete.	— g
15	Cover plate - Y-Carriage - single	309 354
18	Support bracket - Version 1	— g
18	Support bracket - Version 2	— g
19	Screw plate	—
21	Flange plate	— g
22	Glide plate	—
24	Connection box	—
25	Support bracket	—
27	Panel	—
28	Cover plate	—
29	Clamp strip	309 940
29	Clamp strip	309 931
29	Clamp strip - lower	308 374
30	Clamp strip - upper	308 382
31	Rubber strip	314 560
31	Rubber strip	306 657
31	Rubber strip	306 665
33	Bracket	307 920
34	Bracket	317 675
35	Plate	307 939
36	Bracket	307 432
37	Bracket - right	307 424
38	Bracket - left	315 451
39	Cover	307 947
41	Cover plate - service opening	314 714
42	Quick-release screw	205 982
44	Support bracket	363 740
45	Studding - M5 x 124 mm	363 758
47	Name plate	360 074
48	Adhesive name label - 700 x 150 mm	327 212
50	Swivel wheel - ø 75 mm	236 314
51	Fixed wheel - ø 75 mm	236 306
53	Plug housing - 16 pin	230 049
54	Plug insert - 16 pin	221 864
55	Lead-through - PG16/2	204 374
56	Lock nut - PG16	204 412
60	Pressure regulator -1/4"	206 512
61	Panel nut - M30 x 1.5 mm	201 170
62	Pressure gauge - 1/8" - 0-10 bar	243 620
64	Solenoid valve - 1/8" - Nw5 - 230 VAC	253 952
65	Solenoid valve - 1/8"-220 VAC	254 398
65	Solenoid - 1/8"	—
66	Solenoid cable - L = 0.7 m	373 605
67	Solenoid spool - 230 VAC	257842

**POWDER VOLUME SETTING TABLE FOR EASYFLOW INJECTOR**

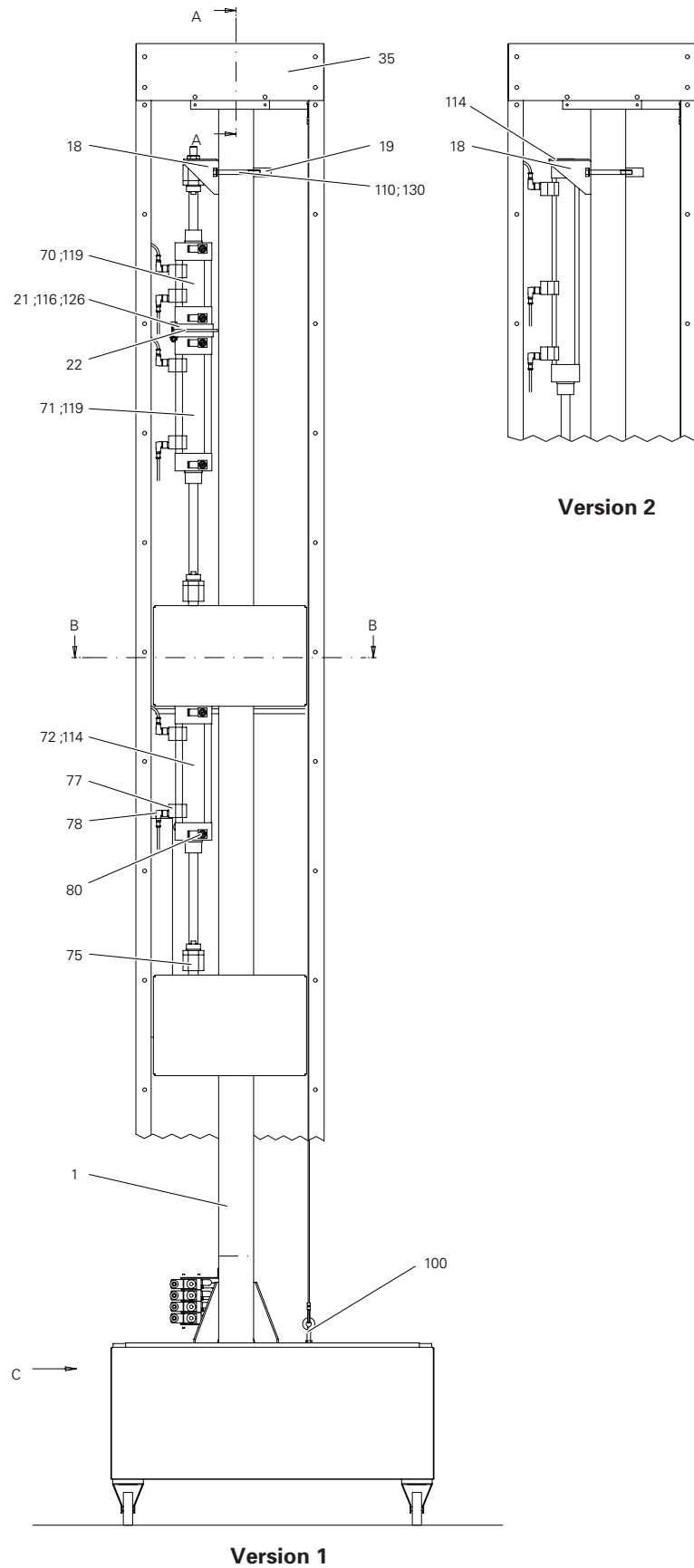


Figure 2

## VERTICAL AXES ACR 03 (PNEUMATIC POSITIONING OPERATION)

70	Cylinder - ø 50 mm - Stroke =.....	— g
71	Cylinder - ø 50 mm - Stroke =.....	— g
72	Cylinder - ø 50 mm - Stroke =.....	— g
75	Spherical coupling	—
77	Cylinder switch	259 438
78	Connection cable - 5 m/4 pin/M12/Elbow	259 420
80	One-way restrictor valve	254 924 A1
80	One-way restrictor valve	— g A2
81	Silencer	237 264
82	Elbow joint - 1/8"-ø 8 mm - High	259 101
83	Elbow joint - 1/8"-ø 8 mm	203 050
84	Elbow joint - 1/8"-ø 8 mm	254 029
85	Elbow joint - 1/8"-ø 6 mm	254 061
86	Elbow joint - 1/8"-ø 6 mm	251 380
87	T-Connection - ø 8-ø 8-ø 8 mm	230 987
88	Elbow joint - ø 8 mm-ø 8 mm	230 995
90	Lead-through - ø 6 mm-ø 6 mm	202 371
91	Connection bush - 1/8"-ø 8 mm	236 020
92	Plug - Nw 5.2 -1/8"	200 859
95	Plastic hose - ø 8/ 6 mm - black - antistatic	103 756
97	Steel cable - ø 3.0 / 4.0 mm	103 870
98	Cable eye - 13 x 5,5 x 21 mm	202 010
99	Cable clamp - 02-03.5 mm-1/8"	202 029
100	Eye screw - M8 x 60 mm	250 686
105	Edge protection strip - 0.5-2 mm	102 415
107	Blind grommet	201 634
110	Hex. Stud screw - M10 x 100 mm	214 213
111	Hex. Screw - M10 x 50 mm	214 159
112	Hex. Screw - M10 x 20 mm	214 108
113	Hex. Screw - M8 x 12 mm	213 918
114	Hex. Shake-proof screw - M8 x 16 mm	244 457
115	Hex. Shake-proof screw - M6 x 20 mm	244 414
116	Hex. Screw - M8 x 40 mm	213 977
117	Cylinder screw - M8 x 40 mm	216 534
118	Cylinder screw - M4 x 12 mm	215 147
119	Cylinder screw - M8 x 16 mm	216 488
120	Ch/hd screw - M6 x 12 mm - Eco-Fix	238 163
124	Nut - M04	205 192
125	Hex. Shake-proof nut - M6	244 430
126	Hex. Shake-proof nut - M8	244 449
130	Spring washer - M10	215 961
132	Washer - ø 10.5 / 21 X 2 mm	215 821

g = according to order

A1 = Version 1

A2 = Version 2

# Wear parts  
\* Indicate length  
required

**POWDER VOLUME SETTING TABLE FOR EASYFLOW INJECTOR**

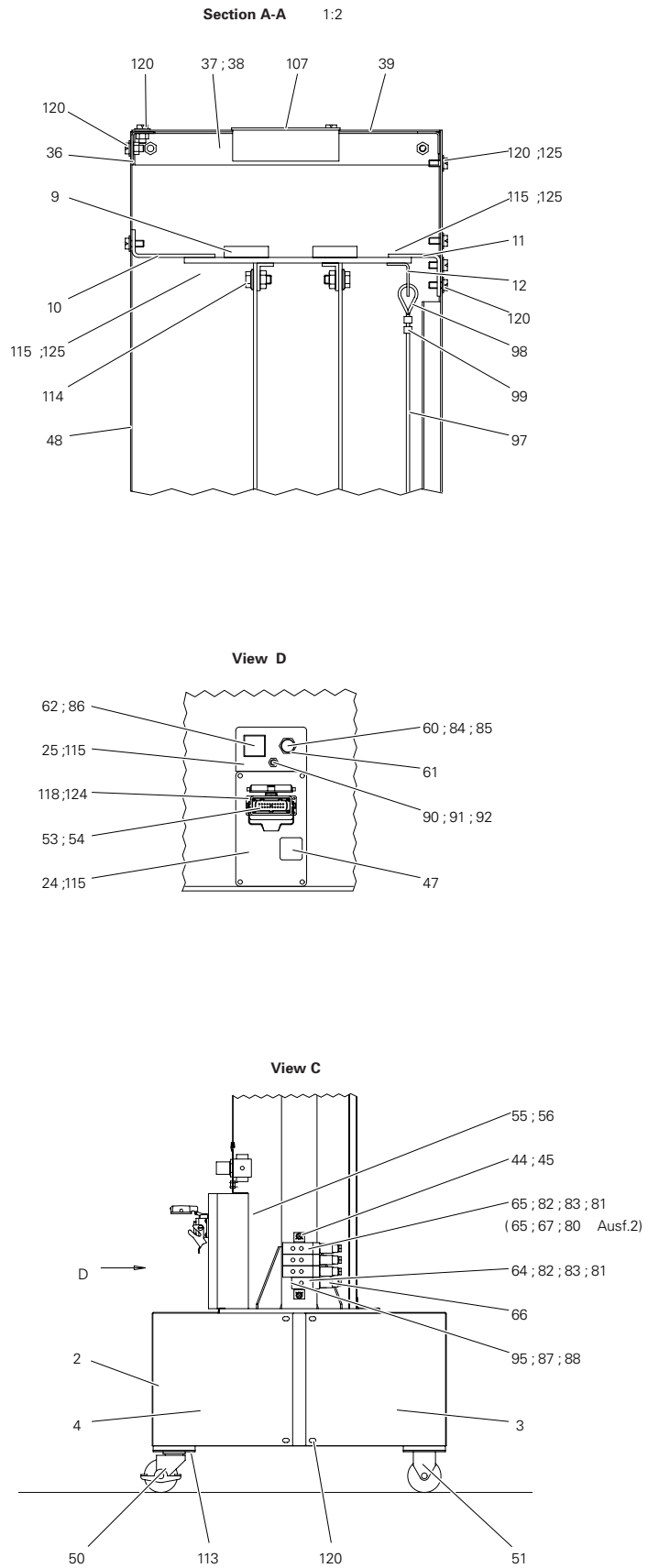


Figure 3

**VERTICAL AXES ACR 03 (PNEUMATIC POSITIONING OPERATION)**

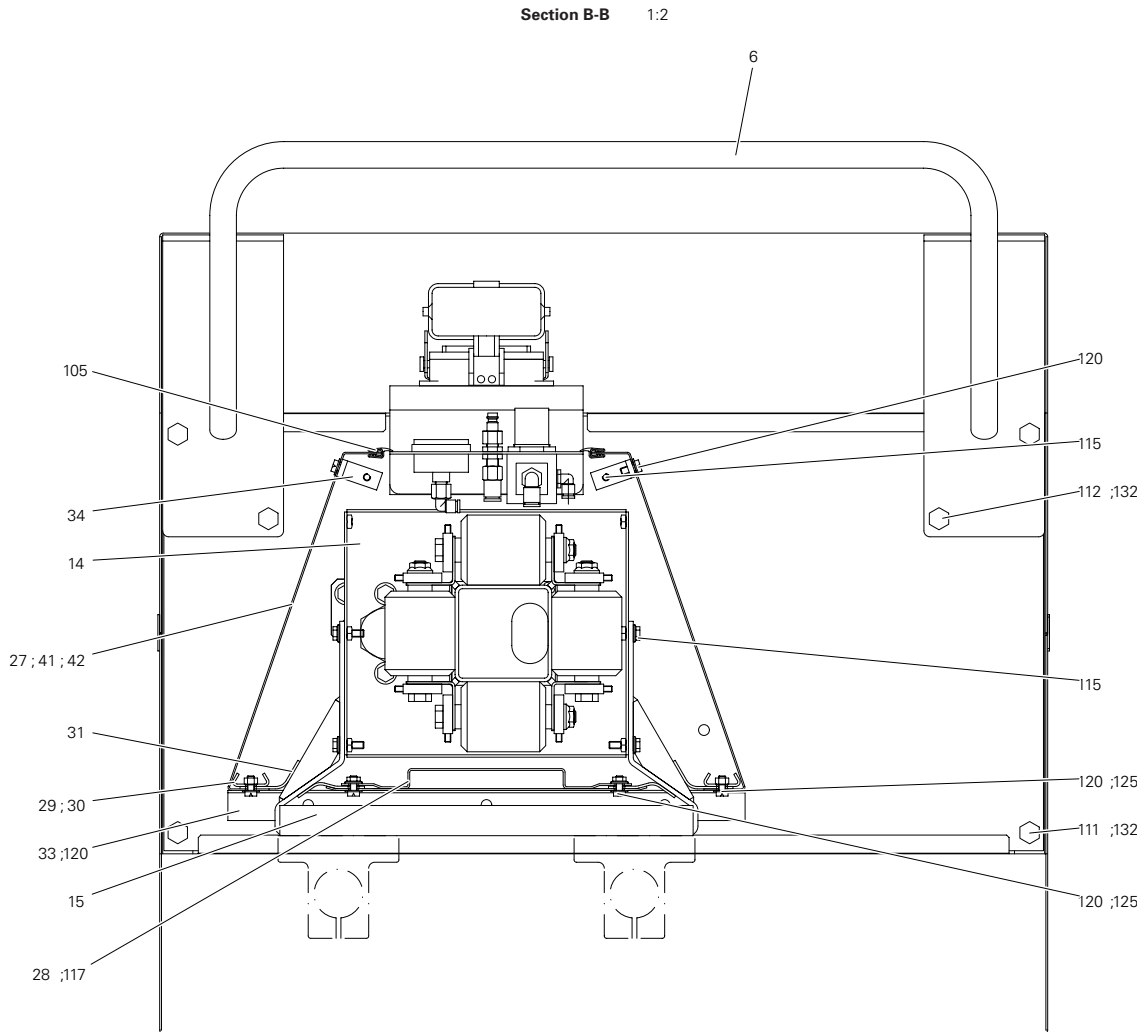


Figure 4



**PNEUMATIC DIAGRAM**

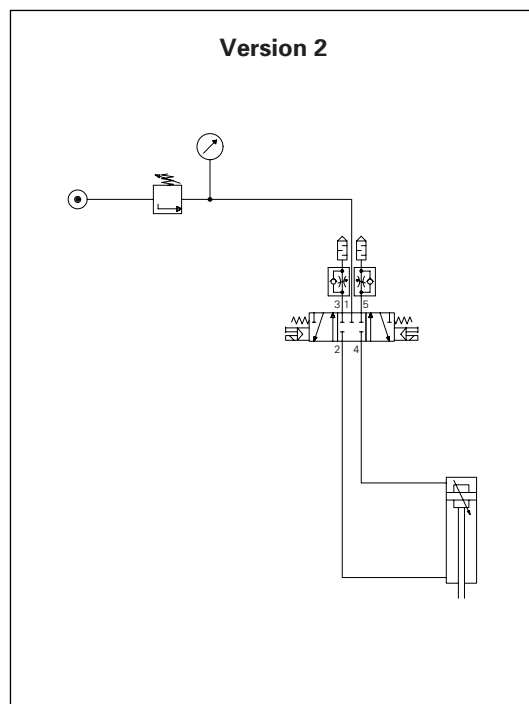
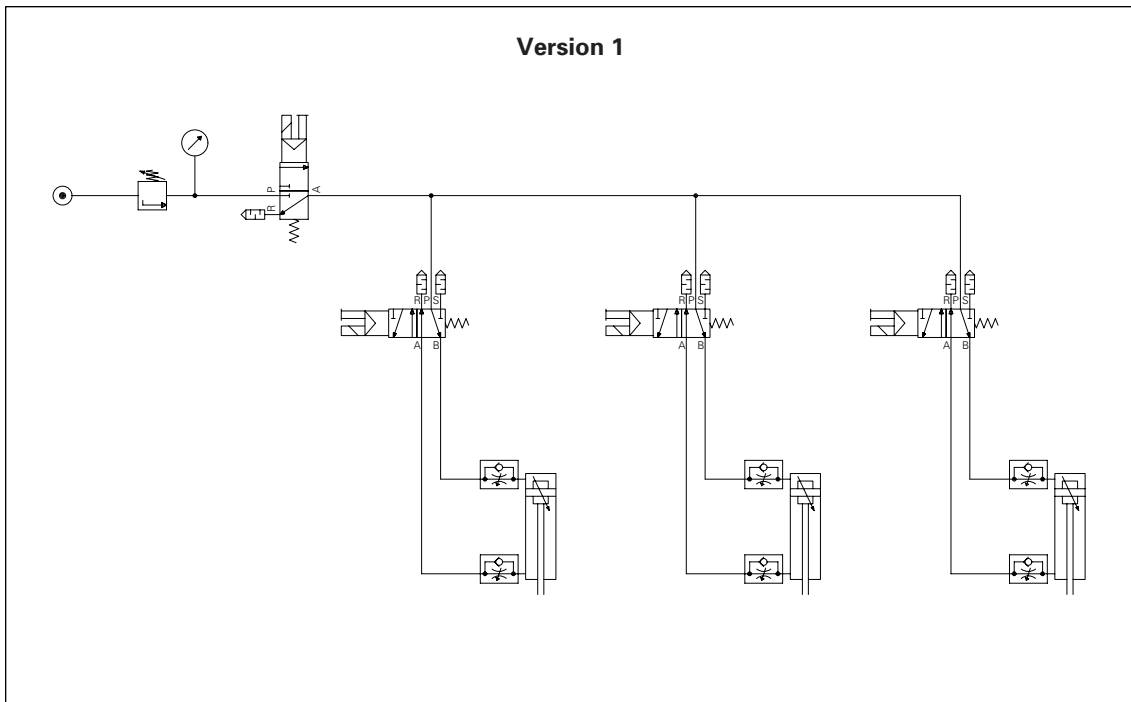


Figure 5

Documentation EasyFlow

© Copyright 1999 ITW Gema AG, CH-9015 St. Gall

All technical products from ITW Gema AG are constantly being developed based on our continuing research and applications. The data found in this publication may therefore change at any time without notice.

Printed in Switzerland