

Spare Parts List

PG 2-AE2 Automatic Enamel Gun

Table of Contents

1. Spare Parts List	1
1.1 Ordering Spare Parts	1
2. PG 2-AE2 Automatic enamel gun	2
2.1 PG 2-AE2 Automatic enamel gun.....	2
2.2 Inclined deflector set for PG 2-AE2	4
2.3 Deflector plate set for PG 2-AE2	5
2.4 Round deflector set for PG 2-AE2 enamel gun	6
2.5 Flat jet nozzle set for PG 2-AE2	7

1. Spare Parts List

1.1 Ordering Spare Parts

When ordering spare parts for powder coating equipment, please indicate the following specifications:

1. Type, and serial number of your powder coating equipment
2. Order number, quantity, and description of *each* spare part

Example:

1. **Type** PG 2-AE2, **Serial no:** xxxx xxxx
2. **Order no:** 232 564 , 2 pieces , O-ring gasket

When ordering cable or hose material the lengths required must also be given.

The spare part numbers of yard/metre ware always begins with 1.. ... and are always marked with an * in the spare parts list.

Wear parts are always marked with a #.

All dimensions of plastic powder hoses are quoted as external (o/d), and internal (i/d) diameters :

e.g.

ø 8 / 6 mm = 8 mm outside diameter (o/d) / 6 mm inside diameter (i/d).

2. PG 2-AE2 Automatic enamel gun

Notes:

1. Only those parts have been included in the spare parts list which can be replaced by the user without difficulty.
2. If a part of the shaft (**1**) is broken or the High-Voltage cascade in the shaft is defective, then the complete shaft must be returned to a ITW Gema service centre to be inspected and/or repaired. **The High-Voltage cascade is fitted according to a special process and therefore should not be dismantled by the user.**

The shaft assembly, however, can be replaced as a spare part. See next page.

3. If the gun cable (**13**) is defective, the complete gun cable assembly should be returned for repair.

2.1 PG 2-AE2 Automatic enamel gun

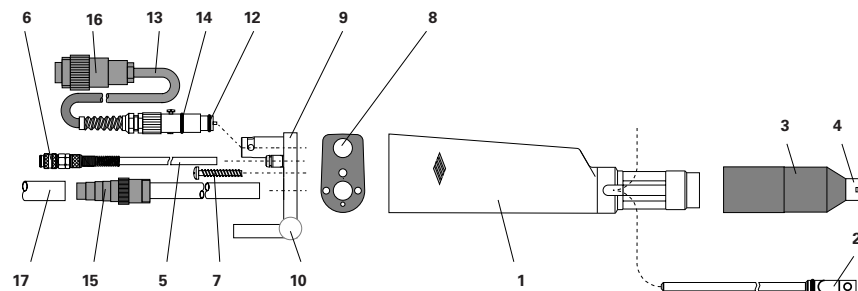


fig. 1

2.1 PG 2-AE2 Automatic enamel gun

PG 2-AE2	Automatic Enamel gun (complete, without items 5 and 17)	405 094
	Gun body complete (incl. items 1, 7, 8, 9, 10, 15)	405 051
1	Shaft (complete, with item 2)	361 534
2	Sealing rod - complete	361 526
2.1	O-ring gasket \varnothing 6.1 x 1.6	232 432#
3	Threaded sleeve	404 101
4	Flat jet nozzle set	404 225
5	Rinsing air hose \varnothing 6 / 4	103 144*
6	Quick release connection	200 840
7	Special screw	248 827
8	Gasket	360 236
9	Gun support bracket	405 388
10	Milled screw	239 879
12	O-ring gasket \varnothing 7.65 x 1.78	232 564
13	Gun cable, complete with 20 m cable, and items 12, 14 16	360 600
13.1	Cable only (for item 13)	103 454*
14	O-ring gasket \varnothing 10.82 x 1.78	232 556
15	Enamel hose connector/Enamel tube (complete)	405 035
16	7- pin plug	200 085
17	Enamel hose - \varnothing 16/11 mm	103 012#*
20	Spiral brush for PG 2-AE2	389 765
21	Small parts set	361 712

* Indicate length required

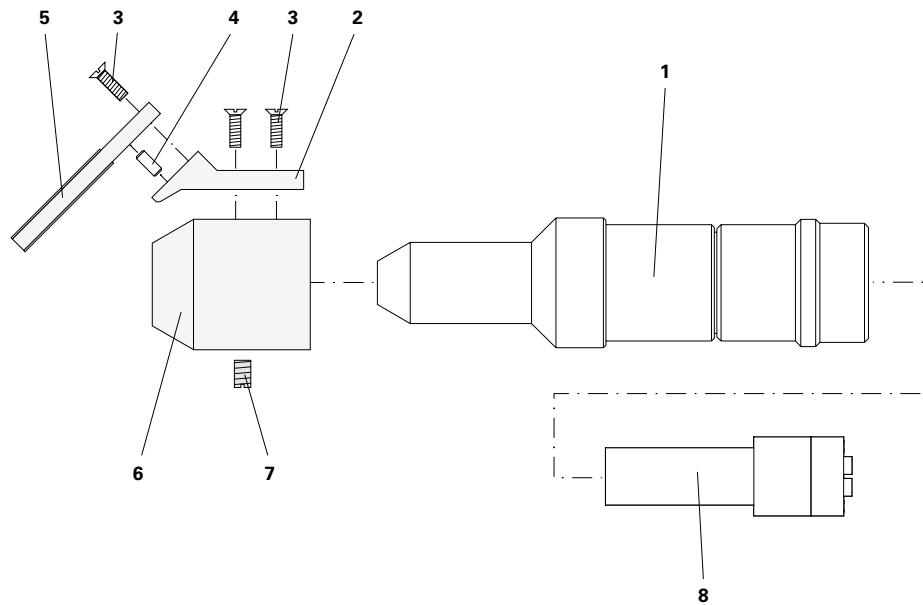
Wear part

2.2 Inclined deflector set for PG 2-AE2

Inclined deflector plate set (complete- without item 1.1) 405 043

Inclined deflector plate set for extensions
(complete- without item 1) 405 027

1	Threaded sleeve	405 191
1.1	Threaded sleeve for extensions	404 748
2	Deflector plate holder	403 890
3	Plastic screw M 6x12	239 593#
4	Cylindrical pin	402 850
5	Inclined deflector plate	402 915#
6	Sleeve	403 881
7	Plastic grub screw M 6x10	234 320
8	Muzzle	404 233#

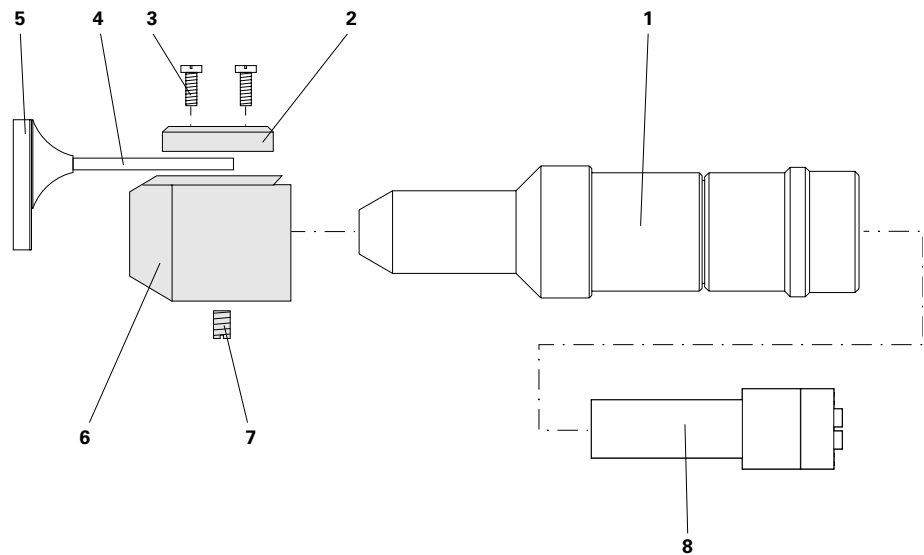


Wear part

fig. 2

2.3 Deflector plate set for PG 2-AE2

	Deflector plate set (complete - without item 1.1)	404 993
	Deflector plate set for extensions (complete - without item 1)	404 985
1	Threaded sleeve	405 191
1.1	Threaded sleeve for extensions	404 748
2	Clamp plate	403 865
3	Plastic screw M 4x12	220 787
4	Deflector rod	403 970#
5	Deflector plate	403 946#
6	Sleeve	403 857
7	Plastic grub screw M 6x10	234 320
8	Muzzle	404 233#

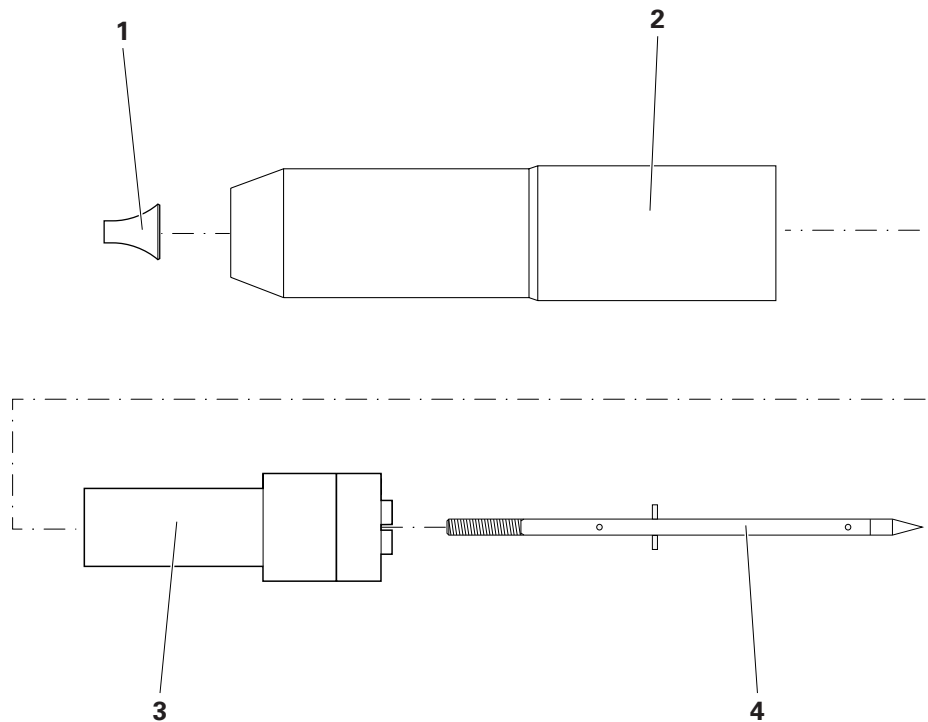


Wear part

fig. 3

2.4 Round deflector set for PG 2-AE2 enamel gun

	Round deflector set (complete - without deflectors)	405655
1	Round deflector \varnothing 15	400262#
1.1	Round deflector \varnothing 24	400181#
1.2	Round deflector \varnothing 28	400254#
1.3	Round deflector \varnothing 32	400238#
1.4	Round deflector \varnothing 50	400246#
2	Threaded sleeve	405647
3	Muzzle	405639#
4	Deflector rod (complete)	405582#



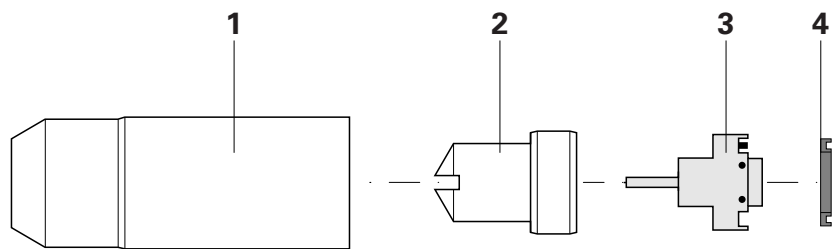
Danger of injury: Great care should be taken when handling the deflector rod as the tip (Item 5) has sharp point!!

Wear part

fig. 4

2.5 Flat jet nozzle set for PG 2-AE2

	Flat jet nozzle set (without item 1)	404 225
1	Threaded sleeve	404 101
2	Flat jet nozzle	404 128#
3	Electrode holder	404 209#
4	Contact ring	318 760#



Wear part

fig. 5

Documentation PG 2-AE2

© Copyright 2000 ITW Gema AG., CH-9015 St. Gallen
All rights reserved.

This publication is protected by copyright. Unauthorized copying is prohibited by law. No part of this publication may be reproduced, photocopied, translated, stored on a retrieval system or transmitted in any form or by any means, for any purpose, neither as a whole nor partially, without the express written consent of ITW Gema AG.

OptiTronic, OptiGun, EasyTronic, EasySelect, EasyFlow and SuperCorona are registered trademarks of ITW Gema AG.

OptiMatic, OptiMove, OptiMaster, OptiPlus, OptiMulti and Gematic are trademarks of ITW Gema AG.

All other product names are trademarks or registered trademarks of their respective holders.

Reference is made in this manual to different trademarks or registered trademarks. Such references do not mean that the manufacturers concerned approve of or are bound in any form by this manual.

We have endeavoured to retain the preferred spelling of the trademarks, and registered trademarks of the copyright holders.

To the best of our knowledge and belief, the information contained in this publication was correct and valid on the date of issue.

ITW Gema AG makes no representations or warranties with respect to the contents or use of this publication, and reserves the right to revise this publication and make changes to its content without prior notice.

Printed in Switzerland

ITW Gema AG

Mövenstrasse 17
9015 St. Gall
Switzerland

Phone: +41-71-313 83 00

Fax: +41-71-313 83 83

E-mail: info@itwgema.ch

Home page: www.itwgema.ch