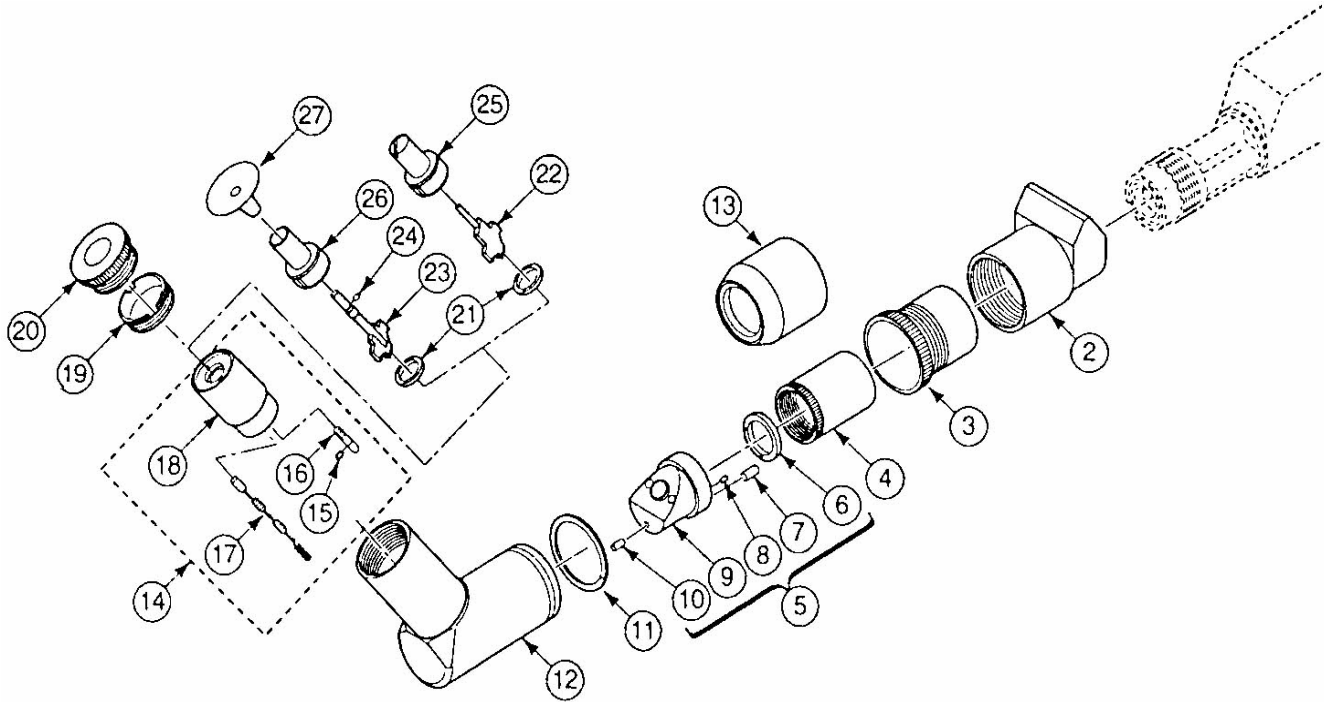


## Angled Nozzle for PG 1-A and PG 2-A Guns



Item	Description	Part No.	Order No.**
1	Angled nozzle, complete	355127	116700
	Angled nozzle, ext. , complete	353876	117205
2	Sleeve, PG-1/1A	341800	117343
3	Ring sleeve, clamp	341819	117347
4	Sleeve	341843	117345
5	Tube assembly ( incl. 6-10)	118456	118456
6	Ring, contact	334928	115018
7	Contact, tube	341886	118452
8	Pin, 2mm X 6mm	201804	118289
9	Tube, angle	341797	118288
10	Pin, locating	343293	118454
11	Ring, holding	341835	117346
12	Housing, outer	341770	118447
13	Sleeve, PG-2A/2AX and ext.	353868	117344
14	Sleeve assembly (incl. 15-18)	118457	118457
15	O-ring	232432	118455
16	Nipple, air	341860	118451
17	Contact assembly, resistor	353639	118453
18	Tube, sleeve	353604	118287

Item	Description	Part No.	Order No.**
19	Clamp, threaded	341851	118450
20	Ring clamp	353612	117185
21	Ring, contact, nozzle	318760	107188
22	Electrode holder, flat jet	318779	116063
23	Electrode holder, round jet		
	with o-ring	351709	116064
24	O-ring	231606#	110354#
25	Nozzle, flat jet	318744	107187
26	Nozzle, round jet	331287	116126
27	Deflector		
	16mm	331341#	107210#
	24mm	331333#	107209#
	32mm	331325#	107208#
	50mm	345822	117183
	70mm	353949	117184
—	Nozzle kit, flat jet, (incl. 21, 22, 25)	319350	116141
—	Nozzle kit, round jet (incl. 21, 23, 26)	351717	116142

# Wear Part

\*\* Please use the "Order No." column when placing orders