

Metallic Conversion Kit for the PG 2-A Automatic Powder Gun

About these Assembly and Operating Instructions

These Assembly and operating instructions contain all the important information which is necessary for converting the PG 2-A powder gun to the metallic nozzle version. In order to be able to fully utilize the properties of metallic nozzle, you should already be familiar with the working practice, and functioning of the complete powder coating plant. It is not the purpose of this manual to instruct in the use of the PG 2-A Automatic powder gun. If, however, problems arise during the operation with the metallic nozzle which are due to the PG 2-A Automatic powder Gun or PGC 1 Control Unit, then please read the functions of the corresponding operating instructions.

1. Field of application

The metallic nozzle conversion kit - Order no. 367 729, is ideal for all types of powder with a high metallic content, giving good powder charging properties and thereby achieving good coating results.

! When working with powders with high metallic content the manufacturer's instructions, as well as the local regulations, must be observed and followed exactly.

The powder charging, as well as the transfer efficiency, when using metallic nozzles with normal plastic powders are, in general, usually inferior to conventional nozzles.

2. Scope of Delivery

The conversion kit - Order no. 367 729 consists of :

Item A	Threaded sleeve	366 285
Item B	Powder tube - complete	367 575
Item C	Flat jet nozzle - complete	367 478
Item D	Round jet nozzle	367 451
Item E	Deflector - ø 24 mm	331 333

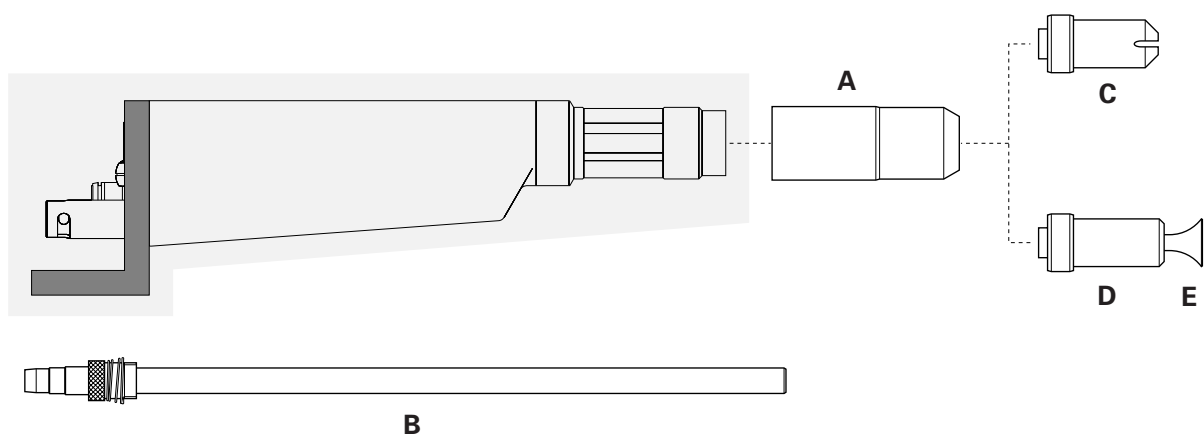


Figure 1

Converting the PG 2-A to Metallic Nozzle

Before using the metallic nozzle it is necessary to dismantle the existing powder tube, as well as the powder hose connection of the PG 2-A and replace with the parts supplied.

Attention : Before dismantling the gun make sure that the control unit is switched off and the gun connector is disconnected from the socket ("A Gun" - on the rear of the control unit).

a) Replacing the powder tube and powder hose connection

The metallic nozzle is only useful for coating with metallic powders. If it is necessary to coat with normal powder, the PG 2-A gun must be converted to its original condition.

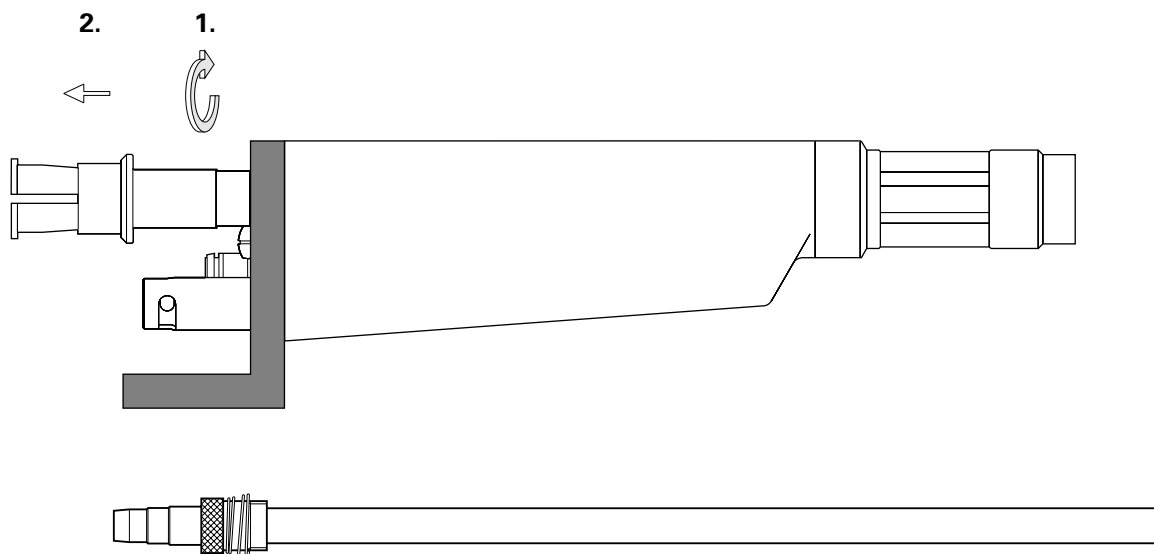


Figure 2

b) Assembling the flat jet nozzle

The prerequisite for the following steps is that the new powder tube and the powder hose connection have been previously assembled according to "Replacing the powder tube and powder hose connection".

Before fitting the flat jet nozzle make sure that the contacts on the gun nozzle are free from grease and powder, otherwise the electrical contact will not be properly made.

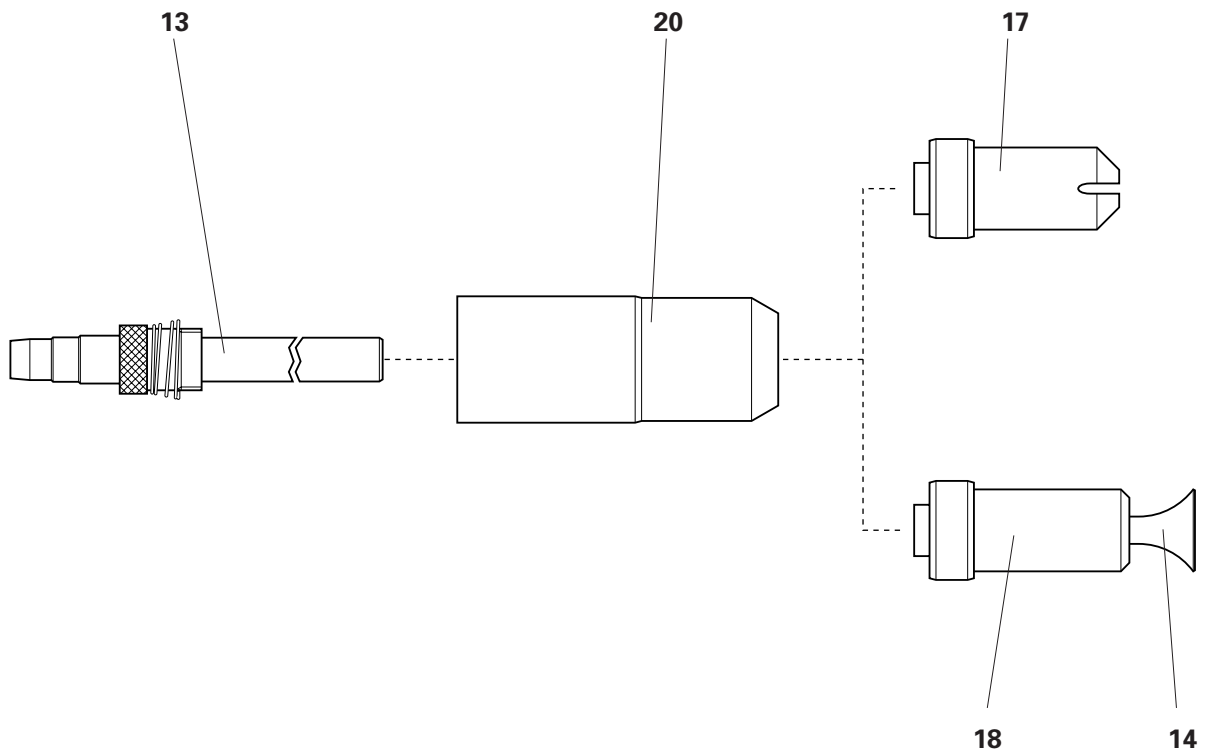
1. Fit the nozzle on the gun and tighten the threaded sleeve **slightly**.
2. When necessary turn the nozzle body to the desired position.
3. Screw on the threaded sleeve **well**.

Attention: If the threaded sleeve is fitted too loosely or not screwed on tight enough this could lead to damage to the gun and nozzle!

Spare Parts List

Metallic-Set PG 2-A

	Metallic Set PG 2-A	367 729
13	Powder Tube PG 2-A	367 575 #
14	Deflector 16 mm	331 341 #
	Deflector 24 mm (standard)	331 333 #
	Deflector 32 mm	331 325 #
17	Flat Jet nozzle - complete	367 478 #
18	Round Jet nozzle - complete	367 451 #
20	Threaded sleeve cpl. D24	366 285



Wear Part
 * Indicate length required

Figure 3

Notes: