

Operating Instructions and Spare Parts List

OptiMatic 2
Automatic Powder System
(AS02)

Table of Contents

1. Fields of application	1
2. Scope of delivery	1
3. Designation	2
4. General information	3
4.1 Mains supply	3
4.2 Compressed air	3
5. Setting up the OptiMatic-2 Automatic Powder System	4
5.1 Possibilities	4
5.2 Assembly instructions	5
5.3 OptiTronic Control CG02 Power Supply	5
6. Electrical diagrams	6
6.1 Block diagram: OptiTronic Control System without CANBus	6
6.2 Digital Connector CD02: Connections X1-X5	7
6.3 Block diagram - Power Main Board for OptiTronic Control unit CG02	8
7. Spare Parts List	9
7.1 Ordering Spare Parts	9
7.2 OptiMatic-2 - Switch Cabinet	10
7.3 Pressure regulator/Filter unit	12
7.4 Power Main Board	13
7.5 CD 02 DigitalConnector	14
7.6 OptiMatic 2: Grounding connection	15

1. Fields of application

The OptiMatic 2 automatic powder system with ITW Gema automatic powder guns is especially designed to meet the demands of production line applications in both manufacturing, and custom electrostatic coating installations, where reliability in automated working, comfortable operation, and safety are the outstanding advantages to the user. The flexible, modular structure of the OptiMatic 2 is readily adaptable to any changes in your installation.

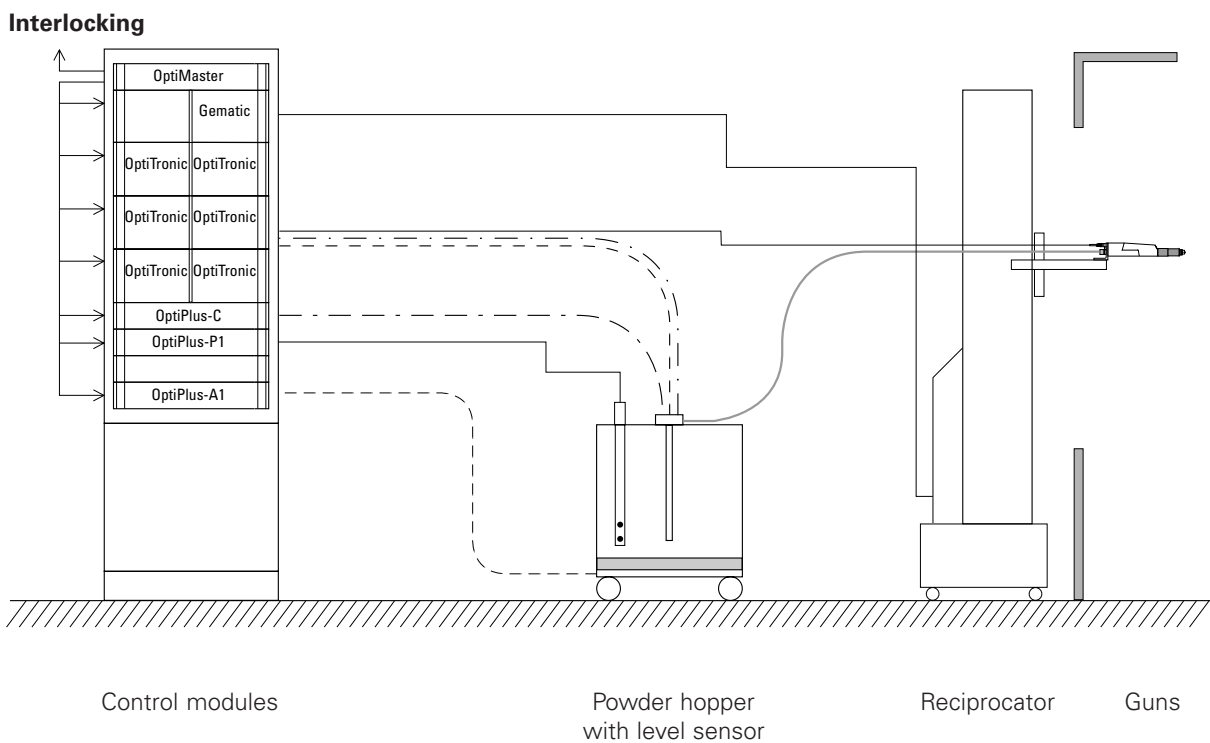


Fig. 1

2. Scope of delivery

The scope of delivery depends on the number and composition of the modules (see above).



It is extremely important to follow the **"assembly instructions"** in this manual, and the operating instructions supplied with every control unit, when setting up and operating the OptiMatic 2 System.

3. Designation

OptiMatic-2

Atomizer	OptiGun A(X)	
	OptiGun AE	Enamel
	PG 2-A(X)	
	PG 2-AE	Enamel
Controls	OptiMaster	Powder Master Control (CM01 / 02) (for fluidized powder hoppers)
	OptiTronic	Powder Gun Control (CG02)
	Gematic	Powder Reciprocator Control (CR03)
	OptiPlus-A2	Pneumatic / Fluidizing Unit (CA01)
	OptiPlus-C1	Hose Rinsing Control (CC01) (Individual rinsing)
	OptiPlus-C2	Hose Rinsing Control (CC02) (Group rinsing)
Injectors	OptiFlow	Powder Injector (IG02)
	PI 3-V	Powder Injector - Vertical connections
	PI 3-H	Powder Injector - Horizontal connections
	PI 4-V	Powder Injector - Vertical connections with a rinsing air connection
	EI 1-V	Enamel Injector - Vertical connections
	EI 1-H	Enamel Injector - Horizontal connections
Powder hoppers	PH 4-1	
	PH 50-2/4/8	
	PH 100-12	
	PH 150-24	
	PH 200-32	
		Number of injectors
		Capacity in litres

4. General information

This is general information, for more detailed information see corresponding Operating Instructions

4.1 Mains supply

- The Mains supply is the local voltage. See also Wiring diagram
- The mains frequency can be 50 or 60 Hz.
- Adding the connected load of the individual units together gives the total connected load for the complete system.
- All electrical components correspond to the IP 54 type of protection.

4.2 Compressed air

- The equipment only requires a compressed air supply on the main compressed air network (Main air input and compressed air distributor)
- An OptiPlusA1 unit is always fitted to monitor the fluidizing air.
- The following values for compressed air must be maintained :

Input pressure :	6-10 bar
Max. water vapour :	1.3 g/m ³
Max. oil vapour :	0.1 mg/kg

 **IMPORTANT**

For a faultless functioning of the OptiTronic Control units CG02 the main compressed air input pressure must be set at exactly 5.0 bar. Pressure regulator/Filter unit is placed at the rear of the OptiMatic 2 control cabinet .

5. Setting up the OptiMatic-2 Automatic Powder System

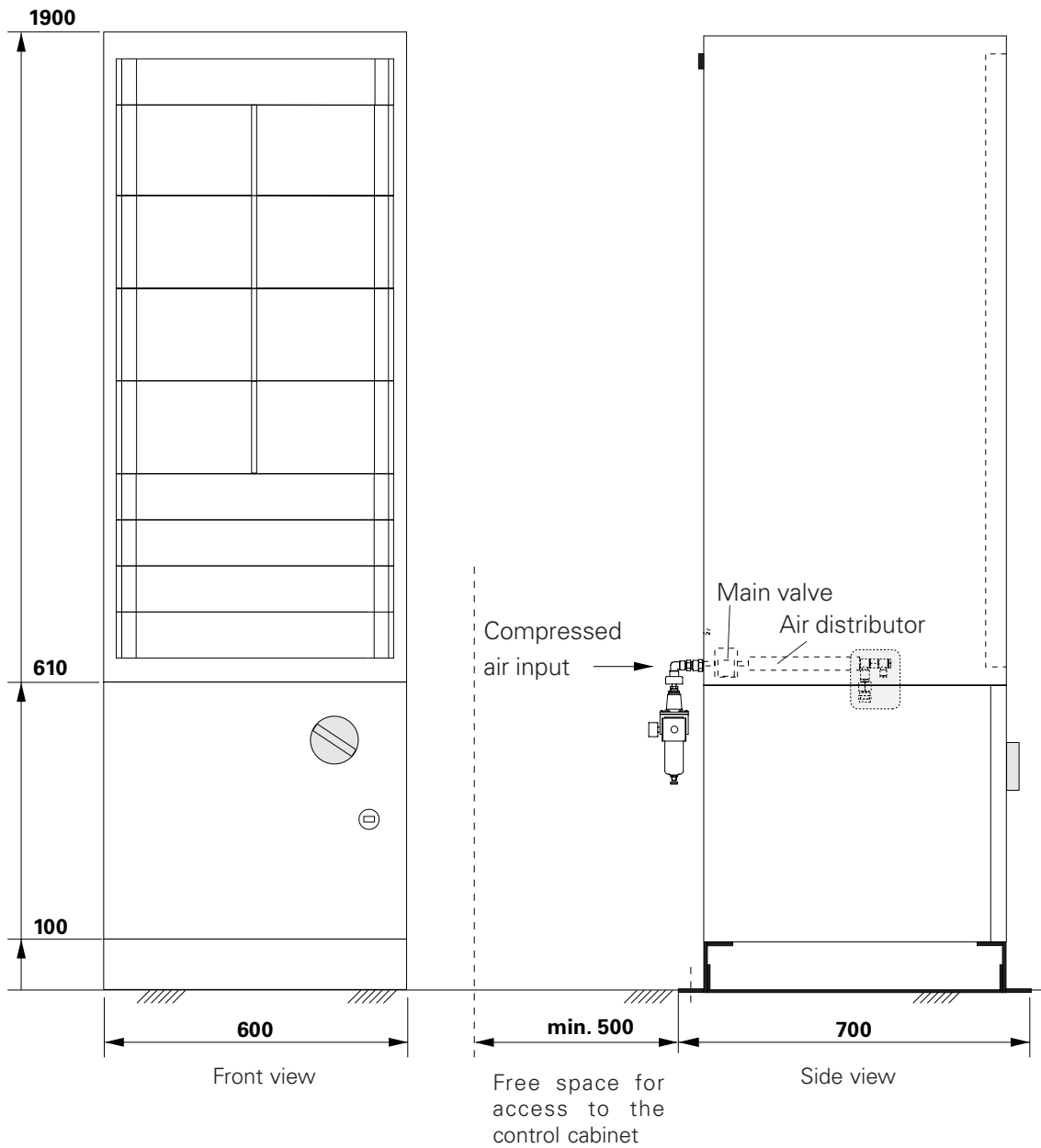


Fig. 2

5.1 Possibilities

- Up to 13 control module units can be fitted.
- OptiMatic 2 cabinets can only be mounted side by side (without a gap) or with one side against a wall.
- Openings which are not used should be sealed with a coverplate. When the OptiMatic 2 system is extended the coverplate can easily be unscrewed.

5.2 Assembly instructions



- After unpacking and assembling the OptiMatic 2 System the control cabinet must be fitted to the floor with the steel bolts supplied. The fixing holes are found in the base at the rear of the cabinet.
- Internal connections have already been made at the factory, connections to control units of external plant must, however, be made before starting up. The connection possibilities for individual control units are found in the accompanying operating instructions.
- When connecting the pneumatic hoses in the control cabinet their lengths, and radii should be specially taken into account!

5.3 OptiTronic Control CG02 Power Supply

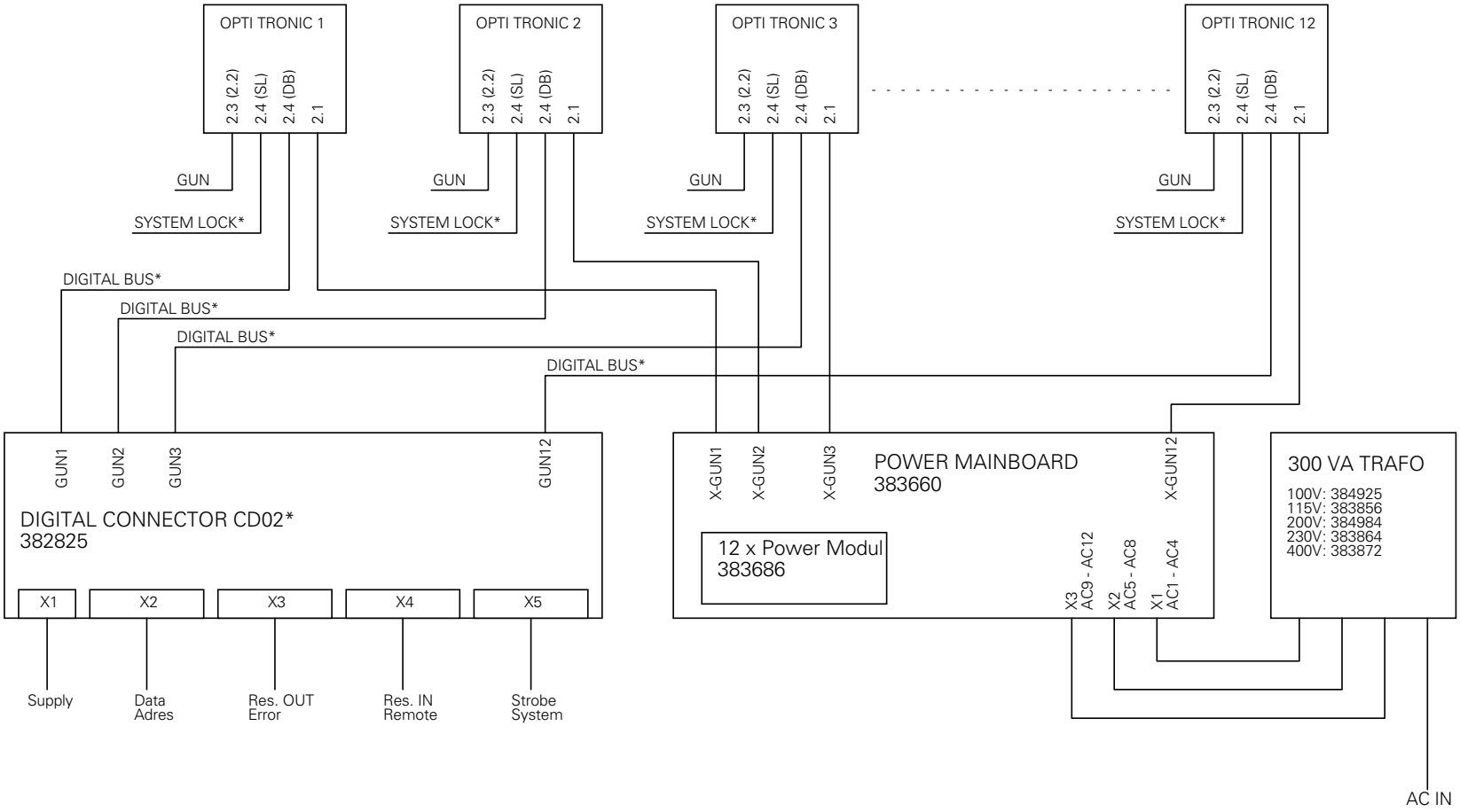
 **NOTICE**

OptiTronic Control CG02 may only be connected to a 24 VDC power supply.

The OptiTronic Control units are only suitable for power supplied from a special Power Main Board. The Power Main Board can be fitted with a maximum of 12 power modules (1 power module per OptiTronic). When retrofitting the equipment with each OptiTronic Control unit a further Power module has to be ordered, which can be easily inserted onto the Power Main Board.

6. Electrical diagrams

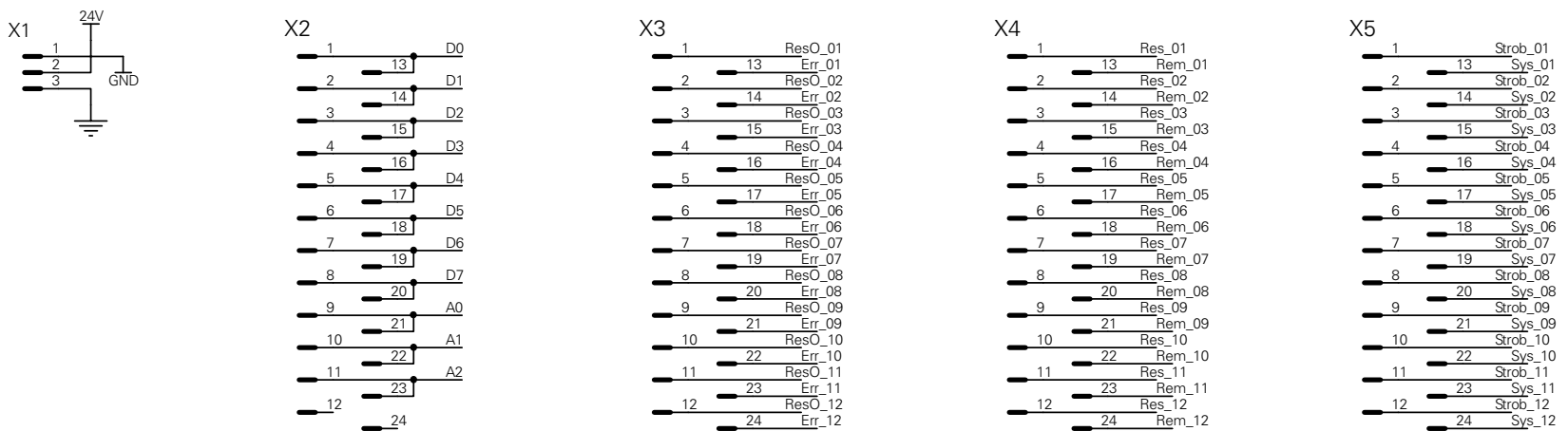
6.1 Block diagram: OptiTronic Control System without CANBus



* OPTION

Fig. 3

6.2 Digital Connector CD02: Connections X1-X5



24 V DC
External Supply
for all Digital
In / Outputs

DataBus - 11 Bit
8 Bit Desired value
3 Bit ID No.

1-12 Guns
Collective error
message

1-12 Guns
Remote / Manual

1-12 Guns
System ON / OFF
Strobe

Fig. 4

6.3 Block diagram - Power Main Board for OptiTronic Control unit CG02

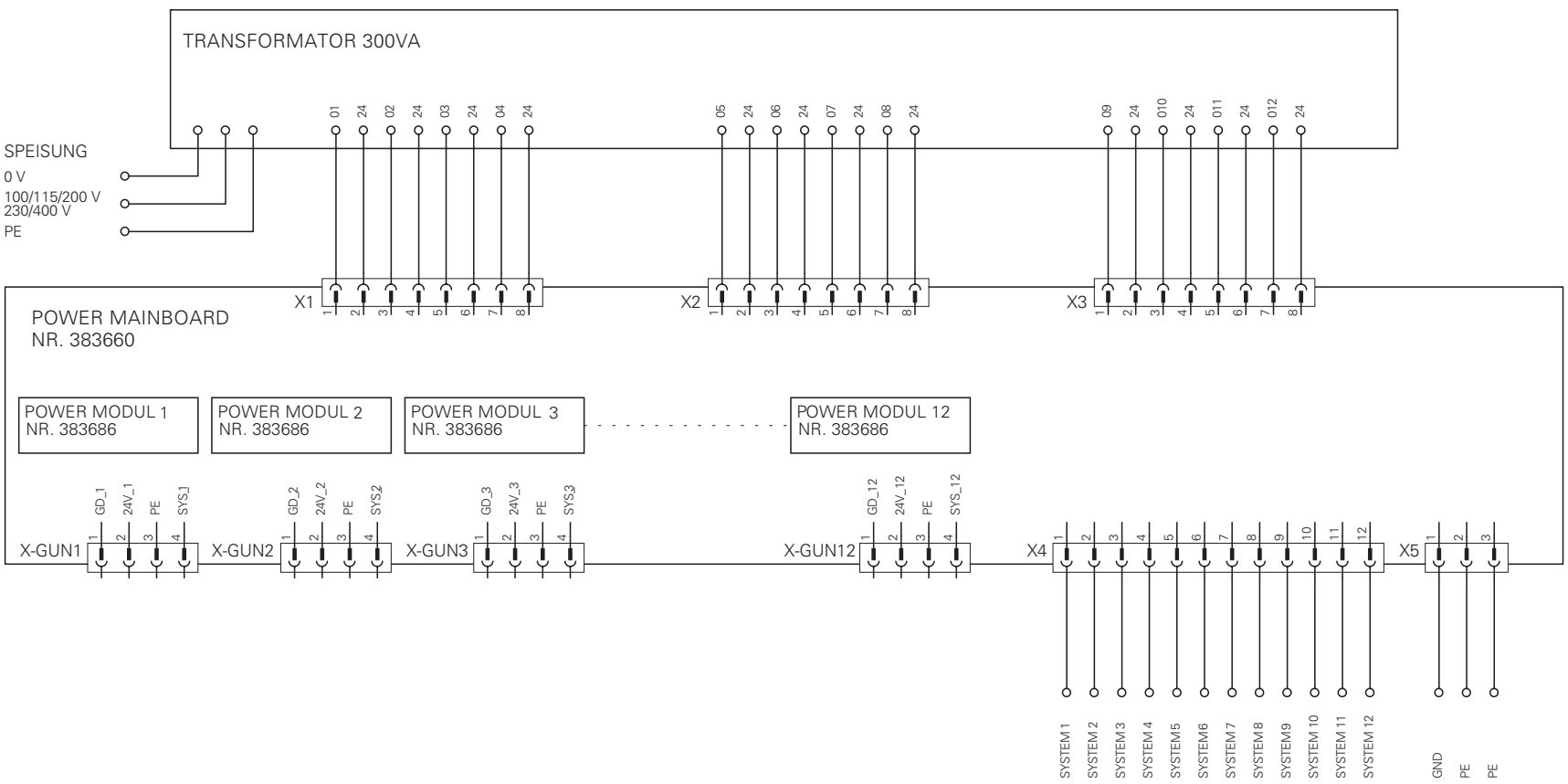


Fig. 5

7. Spare Parts List

7.1 Ordering Spare Parts

When ordering spare parts for powder coating equipment, please indicate the following specifications :

1. Type, and serial number of your powder coating equipment.
2. Order number, quantity, and description of each spare part.

Example :

- | | | | |
|----------------------|-------------|--------------------|----------------|
| 1. Type : | OptiMatic-2 | Serial no : | XXXX XXXX |
| 2. Order no : | 234 265 | 1 piece, | Sealing gasket |

When ordering cable or hose material the length required must also be given. The spare part numbers of this yard/metre ware is always marked with an *.

The spare part number of yard/metre ware always begins with 1..

All wear parts are marked with a #.

All dimensions of plastic hoses are given as external and internal diameters :
e.g. \emptyset 8 / 6 mm = 8 mm outside diameter (o/d) / 6 mm inside diameter (I/d).

7.2 OptiMatic-2 - Switch Cabinet

1	Drawer holder - large (left)	380 890
2	Roller guide (left)	342 041
3	Escutcheon plate - small	341 991
4	Door lock	244 660
5	Key (for items 4 and 9)	206 008
7	Drawer holder - large (right)	380 881
8	Roller guide (right)	342 050
9	Door lock	239 887
11	Rear wall panel	341 606
13	Stud	302 198
15	Pressure regulator/Filter unit -complete (see also page 12)	381 721
16	Double adapter - 1/2"	343 170
17	Clamp nut - 1/2"	239 884
18	Solenoid valve - 24 VAC	264 423
	Solenoid valve - 24 VDC	on request
	Solenoid valve - 230 VAC	259 500
	Solenoid valve - 110 VAC	on request
19	Double adapter - 1/2"	202 436
20	Distributor block - 10x ø 8 mm	343 250
21	Air connection ring - 3/8"	241 970
22	Double adapter - 3/8"	242 020
23	Cap nut - 3/8"	203 157
24	Hose nipple - ø 10 mm	203 165
25	Solaflex hose - ø 16 / 10 mm	100 498*
26	Hose clamp ring	203 386
27	Air connection adapter - 3/8"	241 997
28	Air connection ring - ø 8 mm	241 989
29	Air connection adapter - 3/8"	242 004
30	Plug - ø 8 mm	238 023
31	Plug screw	203 319
32	Cover plate - for large drawer unit	380 903
33	Floor plate - for large drawer unit	380 920
34	Front plate - large	380 911
35	Drawer holder - small (left)	342 009
36	Drawer holder - small (right)	342 017
40	Mounting plate - empty ¹	345 490
41	Mounting plate - empty ¹	368 660
42	Mounting plate - empty ¹	346 276

* Indicate length required

¹ For electrical components see accompanying wiring diagram

OptiMatic-2 - Switch Cabinet

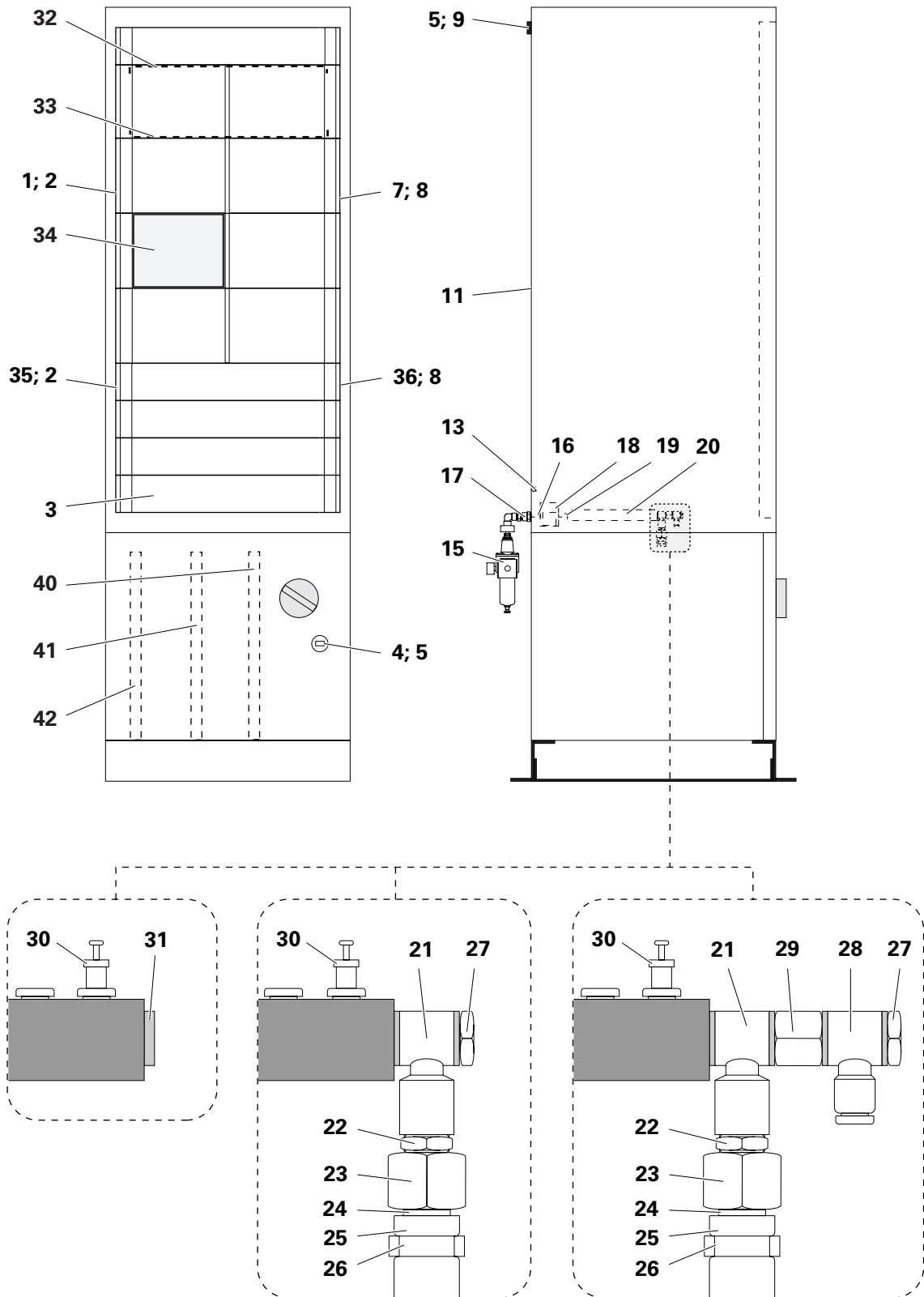


Fig. 6

7.3 Pressure regulator/Filter unit

	Pressure regulator / Filter unit - complete	381721
1	Filter unit - G1/2	262943
2	Pressure regulator - 0.05-10 bar	262935
3	Pressure gauge - 1/8"a - 0-10 bar	259179
4	Adapter - 1/2"i - 1/2"i	202622
5	Adapter - 1/8"i - 1/4"a	231932
6	Double nipple - 1/2"a - 1/2"a	243540
7	Double nipple - 1/2"a - 1/2"a detachable	243582
8	Double nipple - 1/2"a x150 mm	602183
9	Adapter - 1/2"a - 1/2"i	223166
10	Adapter - 1/2"i - 1/2"i	252867
11	Hose connection - D17.0 mm-1/2"a	223069
12	Plug screw - 1/4"a	258695

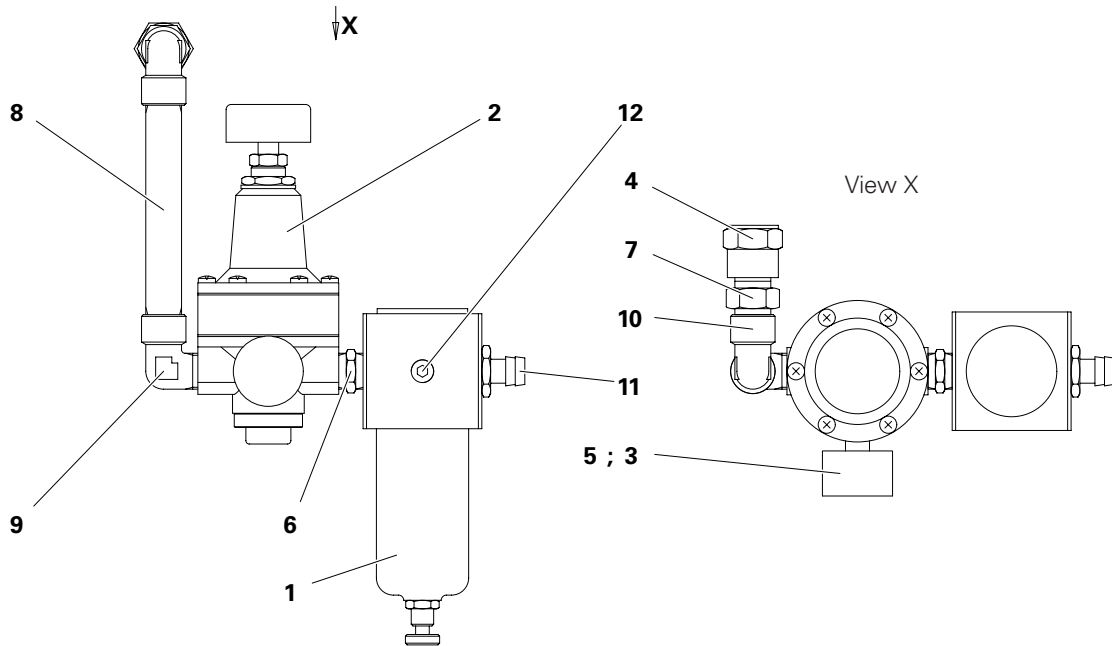


Fig. 7

7.4 Power Main Board

1	Power Main Board - for 12 guns	383 660
2	Power Module - 1x per gun	383 686
3	Transformer - 300 VA (prim. 100 V) for 12 guns	384 925
	Transformer - 300 VA (prim. 115 V) for 12 guns	383 856
	Transformer - 300 VA (prim. 200 V) for 12 guns	384 984
	Transformer - 300 VA (prim. 230 V) for 12 guns	383 864
	Transformer - 300 VA (prim. 400 V) for 12 guns	383 872
	OptiTronic CG 02 Power supply cable - 5m	381 756
	OptiTronic CG 02 Power supply cable - 20m	382 000

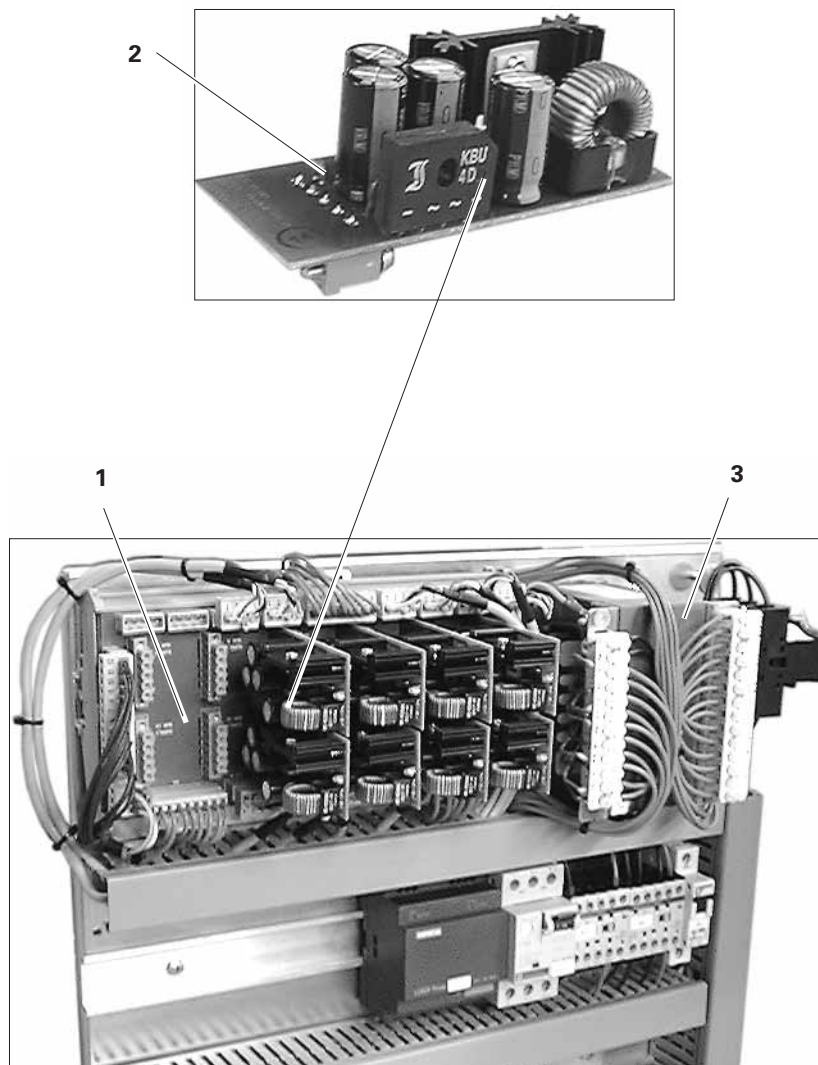


Fig. 8

7.5 CD 02 DigitalConnector

1	CD 02 Digital Connector - for 12 guns	382 825
2	Digital cable - 19 pin - 4.5 m	383 570
	Digital cable - 19 pin - 5.5 m	384 941
	Digital cable - 19 pin - 6.5 m	383 589

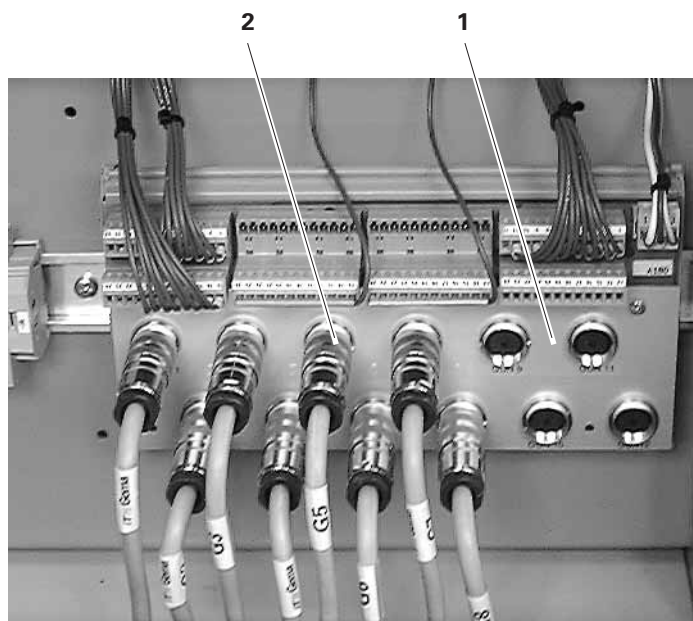
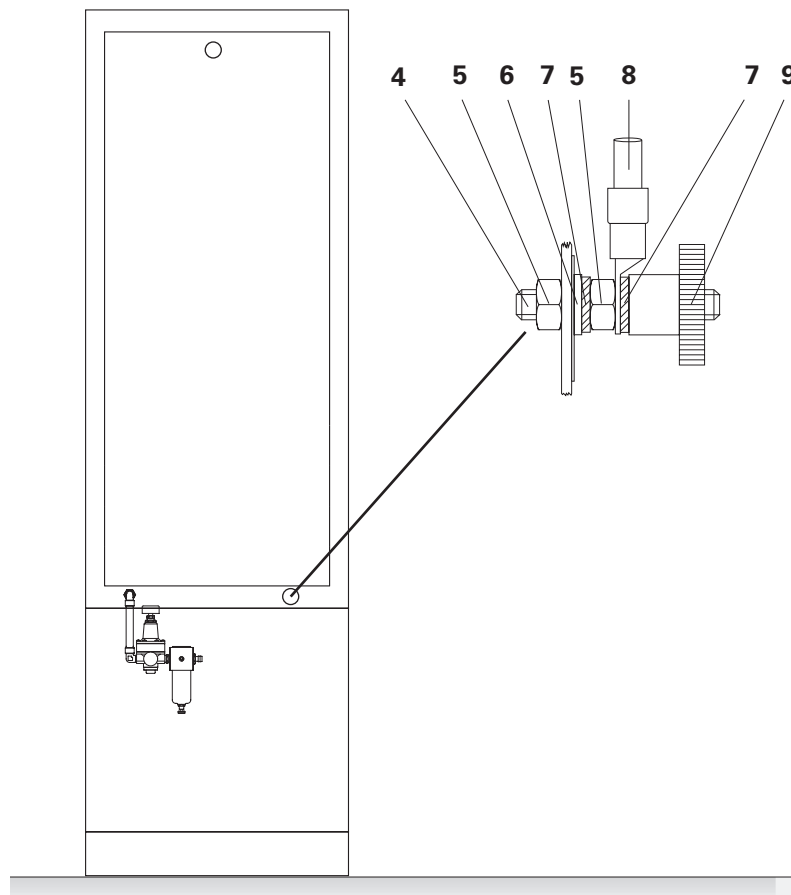


Fig. 9

7.6 OptiMatic 2: Grounding connection

4	Studding - M6x50 mm	301 159
5	Nut	200 417
6	Washer - M6	200 476
7	Shakeproof washer	200 450#
8	Grounding cable	301 140
9	Milled nut	200 433



Rear view

Wear Part

Fig. 10

Documentation OptiMatic

© Copyright 2000 ITW Gema AG.
All rights reserved.

This publication is protected by copyright. Unauthorized copying is prohibited by law. No part of this publication may be reproduced, photocopied, translated, stored on a retrieval system or transmitted in any form or by any means for any purpose, neither as a whole nor partially, without the express written consent of ITW Gema AG.

OptiTronic, OptiGun, EasyTronic, EasySelect, EasyFlow and SuperCorona are registered trademarks of ITW Gema AG.

OptiMatic, OptiMove, OptiMaster, OptiPlus, OptiMulti and Gematic are trademarks of ITW Gema AG.

All other product names are trademarks or registered trademarks of their respective holders.

Reference is made in this manual to different trademarks or registered trademarks. Such references do not mean that the manufacturers concerned approve of or are bound in any form by this manual. We have endeavoured to retain the preferred spelling of the trademarks, and registered trademarks of the copyright holders.

To the best of our knowledge and belief, the information contained in this publication was correct and valid on the date of issue. ITW Gema AG makes no representations or warranties with respect to the contents or use of this publication, and reserves the right to revise this publication and make changes to its content without prior notice.

Printed in Switzerland

ITW Gema AG
Mövenstrasse 17
9015 St.Gallen
Switzerland

Phone: +41-71-313 83 00
Fax: +41-71-313 83 83

E-mail: info@itwgema.ch
Internet: www.itwgema.ch