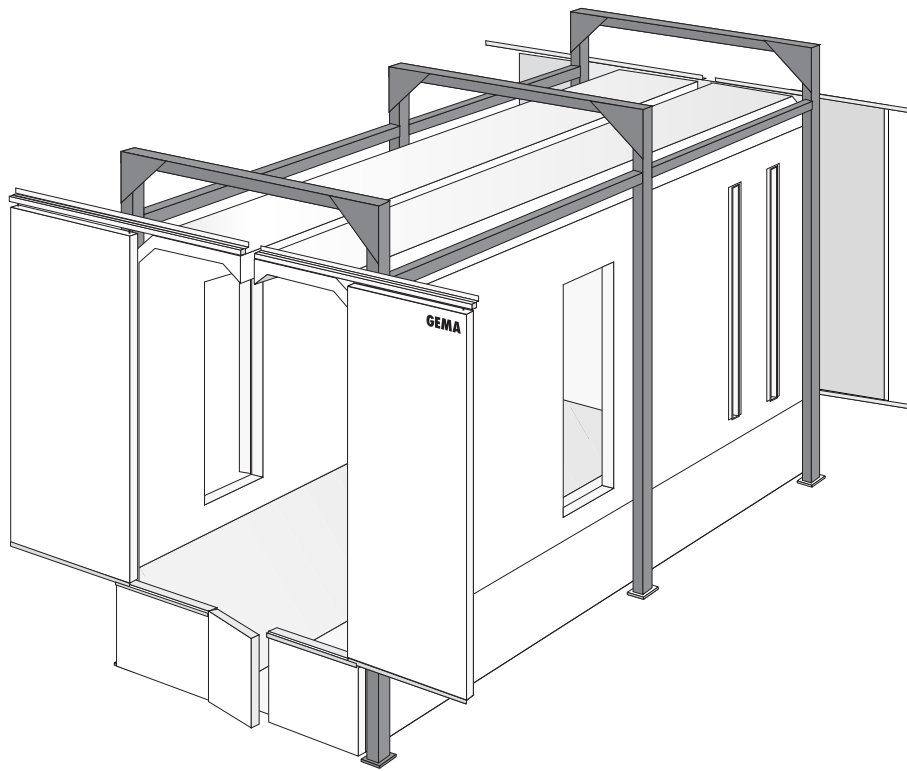
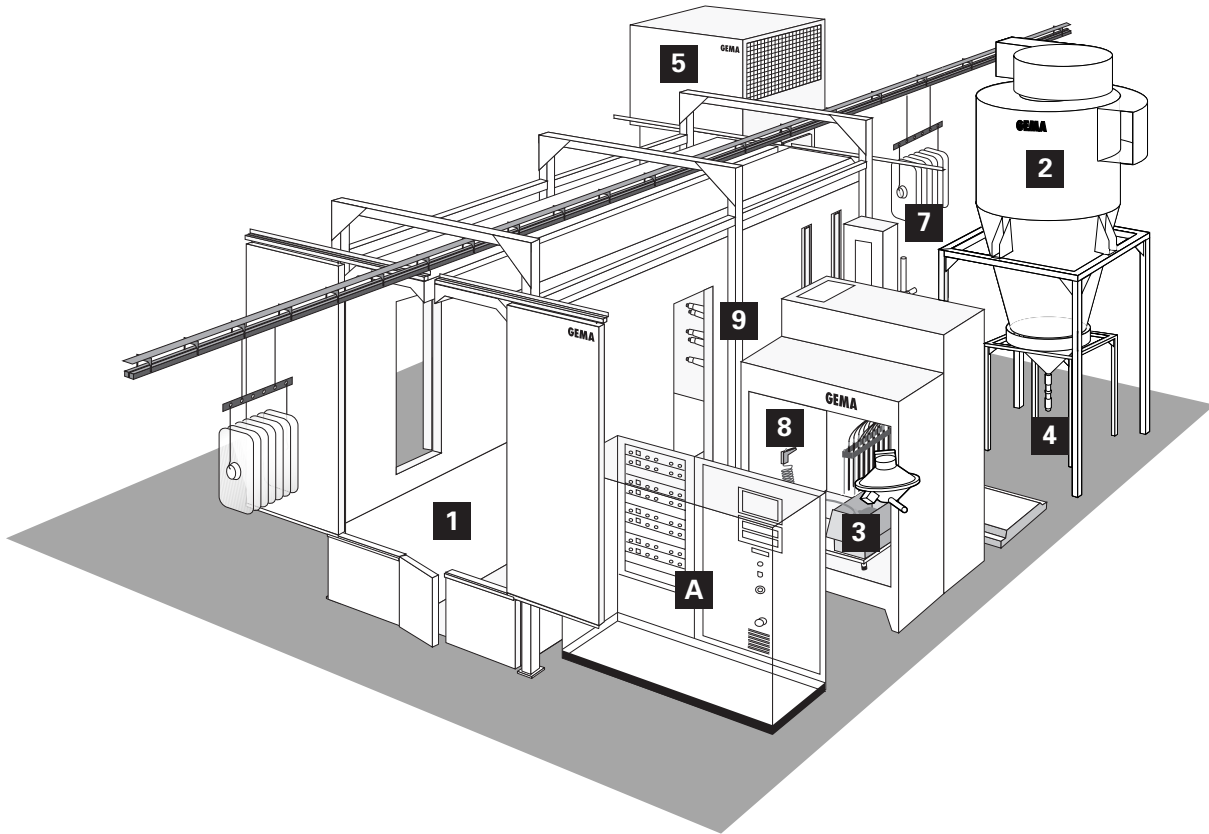


Spare Parts List

# Magic Plus Powder Coating Booth



## Table of Contents



1	Booth	
	Powder Gun Blow-off Unit	..... 2
2	Cyclone separator	..... see separate Spare parts list
3	Powder Sieve Machine	..... see separate Spare parts list
4	Dense phase conveyor	..... see separate Spare parts list
5	After Filter	..... see separate Spare parts list
7	Reciprocator	..... see separate Spare parts list
8	Powder Centre	..... see separate Spare parts list
9	Automatic powder guns	..... see separate Spare parts list
A	Plant controls	..... see Electrical diagram

## Spare Parts List

### Ordering Spare Parts

When ordering spare parts for your powder coating booth, please indicate the following specifications:

1. Type, and serial number of your powder coating booth
2. Order number, quantity, and description of each spare part

Example:

**1. Type** Magic Plus      **Serial no:** 8001 1496

**2. Order no:** 246 573, 1 piece , T-Piece - 1/8"-ø 8-ø 8 mm

When ordering cable or hose material the length required must be given.  
The spare part numbers of this yard/metre ware is always marked with an \*.

The spare part number of yard/metre ware always begins with 1xx xxx.

All wear parts are marked with a #.

All dimensions of plastic hoses are given as external and internal diameters :  
e.g. ø 8 / 6 mm = 8 mm outside diameter (o/d) / 6 mm inside diameter (i/d).

**Powder Gun Blow-Off Unit - complete**

1	Intermediate piece - complete.	381 110
2	End piece - complete.	381 160
3	Tube - ø 18 / 16 mm L=134 mm	381 144
4	Tube - ø 18 / 16 mm L=1950 mm	381 152
5	Compressed air distributor	382 361
10	Stop valve - 1/2"-1/2"	263 095
12	Elbow joint - M5-ø 6 mm	229 253
13	T-Connector - ø 6 mm	237 310
14	Adapter - ø 6 mm-ø 8 mm	246 808
15	Blind plug - 1/2"	259 306
16	Blind plug - 1"	243 612
27	Plastic hose - ø 6 / 4 mm - black	103 144*
30	Hose nozzle - ø 17 mm-1/2"	223 069
31	Solaflex hose - ø 16 / 3.5 mm	102 296*
32	Hose clamp - ø 17-25 mm	223 085
33	Copper wire - L00.750 mm <sup>2</sup> - bare	103 373*

**Only for booths without Powder Centre:**

40	Solenoid valve - 1/8" - NW5 - 230 VAC	253 952#
41	Adapter - 1/2"-1"	252 875
42	Adapter - 1/8"-1/2"	223 778
43	Double nipple - 1/8"-1/8"	202 258
44	Silencer -1/8"	251 305
45	Elbow joint - 1/8"-ø 6 mm	254 061

# Wear part

\* Indicate length required

**Powder Gun Blow-Off Unit - complete**

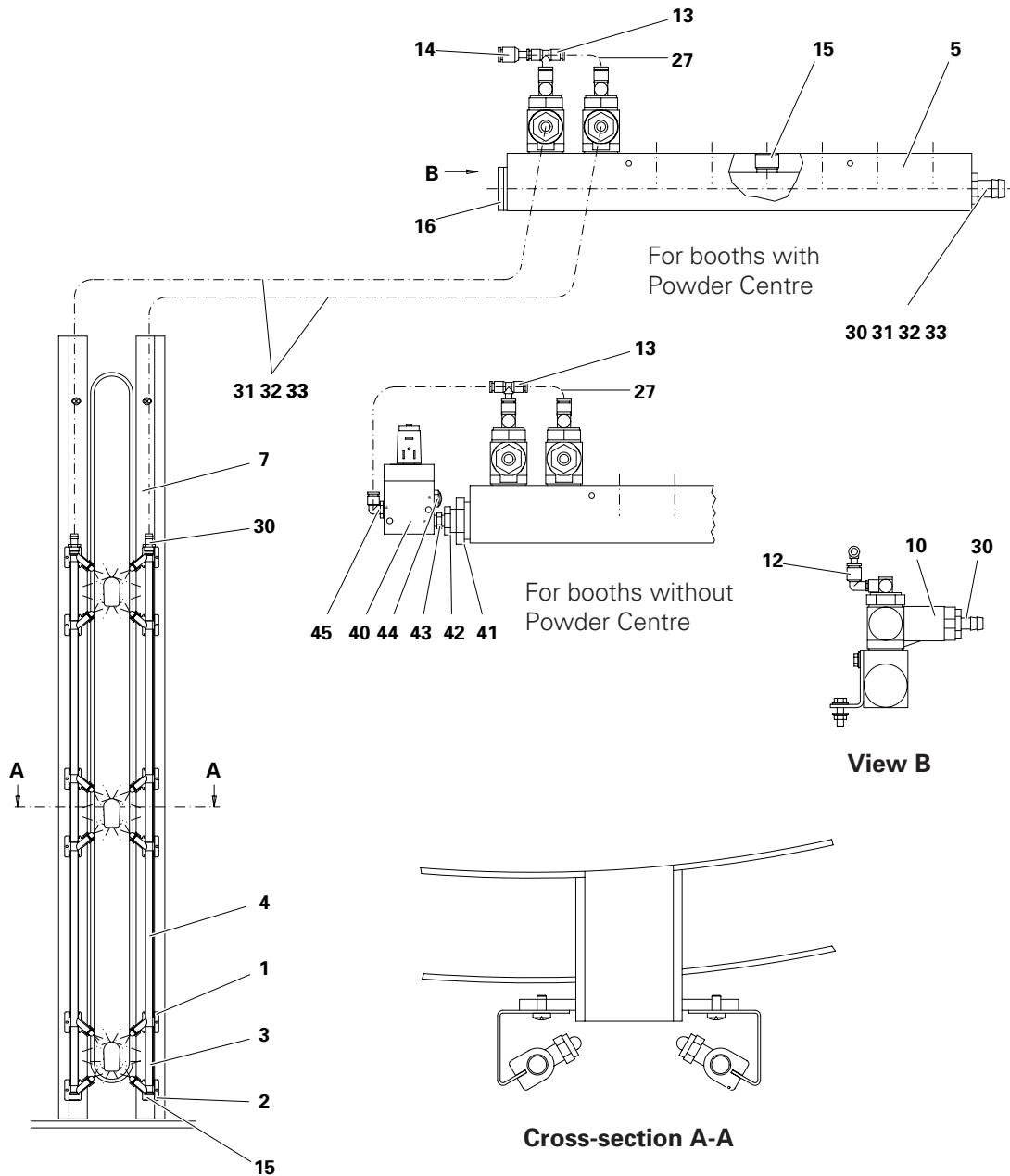


Figure 1

## **Documentation Magic Cylinder - Spare Parts List**

© Copyright 2000 ITW Gema AG.  
All rights reserved.

This publication is protected by copyright. Unauthorized copying is prohibited by law. No part of this publication may be reproduced, photocopied, translated, stored on a retrieval system or transmitted in any form or by any means for any purpose, neither as a whole nor partially, without the express written consent of ITW Gema AG.

OptiTronic, OptiGun, EasyTronic, EasySelect, EasyFlow and SuperCorona are registered trademarks of ITW Gema AG.  
OptiMatic, OptiMove, OptiMaster, OptiPlus, OptiMulti and Gematic are trademarks of ITW Gema AG.

All other product names are trademarks or registered trademarks of their respective holders.

Reference is made in this manual to different trademarks or registered trademarks. Such references do not mean that the manufacturers concerned approve of or are bound in any form by this manual. We have endeavoured to retain the preferred spelling of the trademarks, and registered trademarks of the copyright holders.

To the best of our knowledge and belief, the information contained in this publication was correct and valid on the date of issue. ITW Gema AG makes no representations or warranties with respect to the contents or use of this publication, and reserves the right to revise this publication and make changes to its content without prior notice.

## **Printed in Switzerland**

**ITW Gema AG**  
Mövenstrasse 17  
9015 St. Gall  
Switzerland

Phone: +41-71-313 83 00  
Fax: +41-71-313 83 83  
E-mail: [info@itwgema.ch](mailto:info@itwgema.ch)