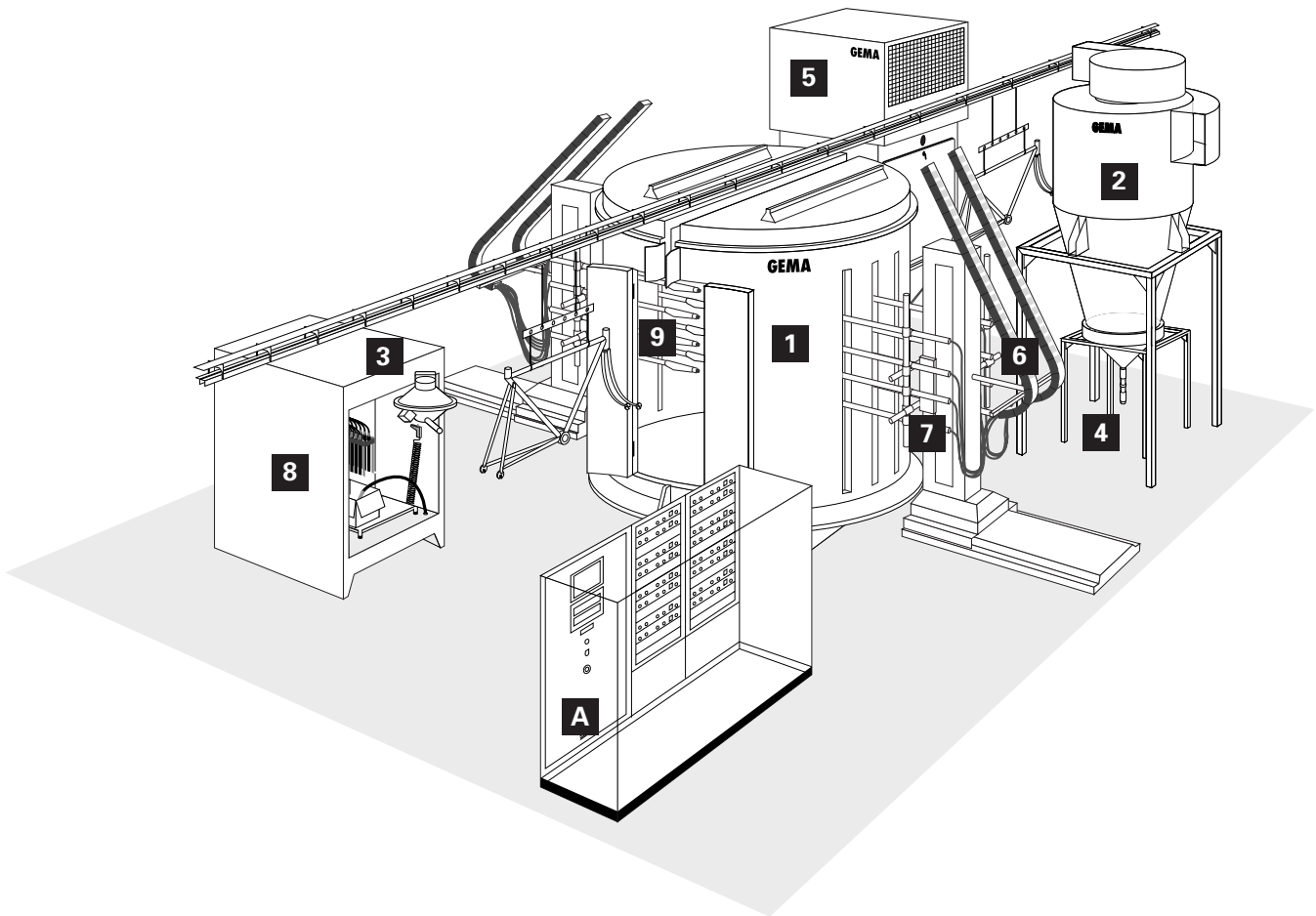


Spare Parts List

# Magic Cylinder Powder Coating Booth



## Table of Contents



1	Booth	
	Booth Superstructure	2
	Door Drive Unit - Optional	4
	Powder Gun Blow-Off Unit	6
	Booth Base	8
	Flap Control Unit	10
2	Cyclone separator	see separate Spare parts list
3	Powder Sieve Machine	see separate Spare parts list
4	Dense phase conveyor	see separate Spare parts list
5	After Filter	see separate Spare parts list
7	Reciprocator	see separate Spare parts list
8	Powder Centre	see separate Spare parts list
9	Automatic powder guns	see separate Spare parts list
A	Plant controls	see Electrical diagram

## Spare Parts List

### Ordering Spare Parts

When ordering spare parts for your powder coating booth, please indicate the following specifications:

1. Type, and serial number of your powder coating booth
2. Order number, quantity, and description of each spare part

Example:

**1. Type** Magic Cylinder **Serial no:** 8001 1496

**2. Order no:** 246 573, 1 piece , T-Piece - 1/8"-ø 8-ø 8 mm

When ordering cable or hose material the length required must be given.  
The spare part numbers of this yard/metre ware is always marked with an \*.

The spare part number of yard/metre ware always begins with 1xx xxx.

All wear parts are marked with a #.

All dimensions of plastic hoses are given as external and internal diameters :  
e.g. ø 8 / 6 mm = 8 mm outside diameter (o/d) / 6 mm inside diameter (i/d).

## **Booth Superstructure**

- |   |   |             |
|---|---|-------------|
| 1 | Door Drive Unit - Optional  | see page 4  |
| 2 | Powder Gun Blow-Off Unit  | see page 6  |
| 3 | Flap Opening Unit<br>(for booths requiring 16000 m <sup>2</sup> /h or more exhaust air) | see page 10 |

**Booth Superstructure**

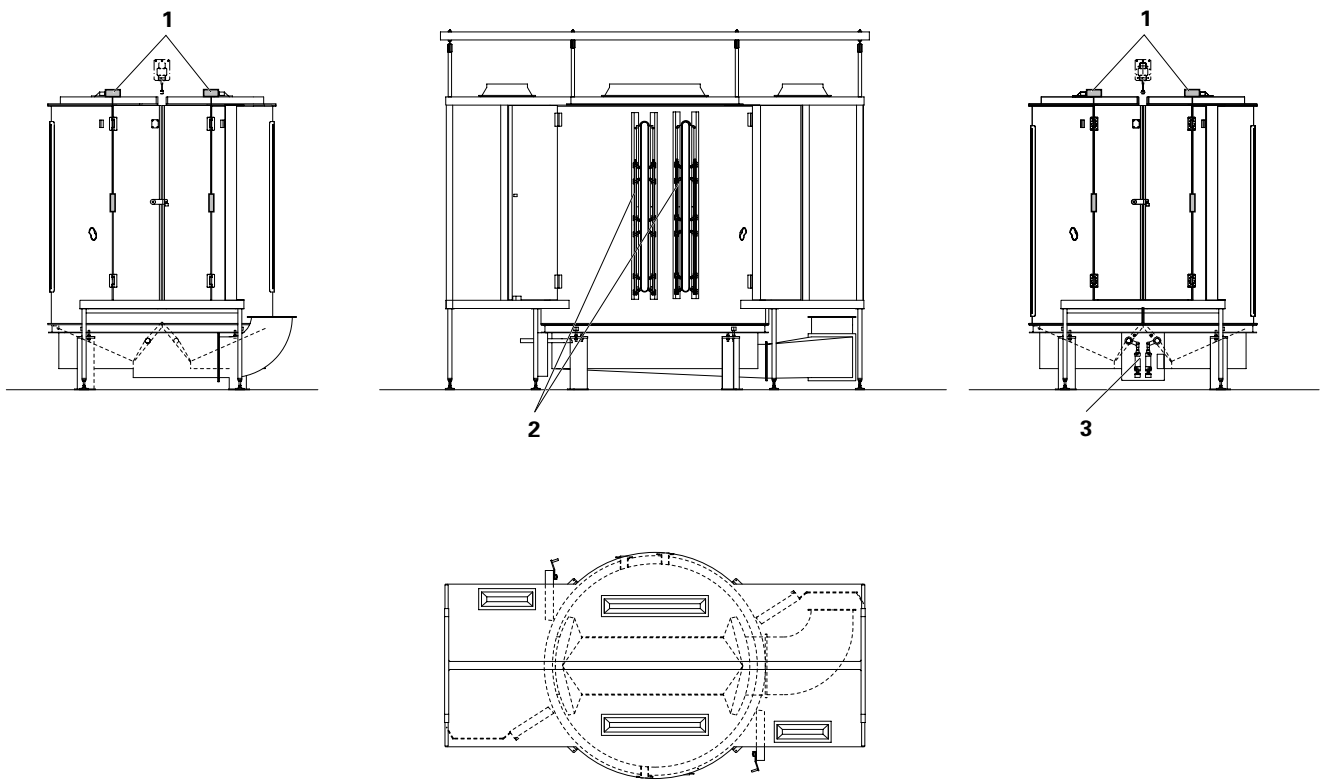


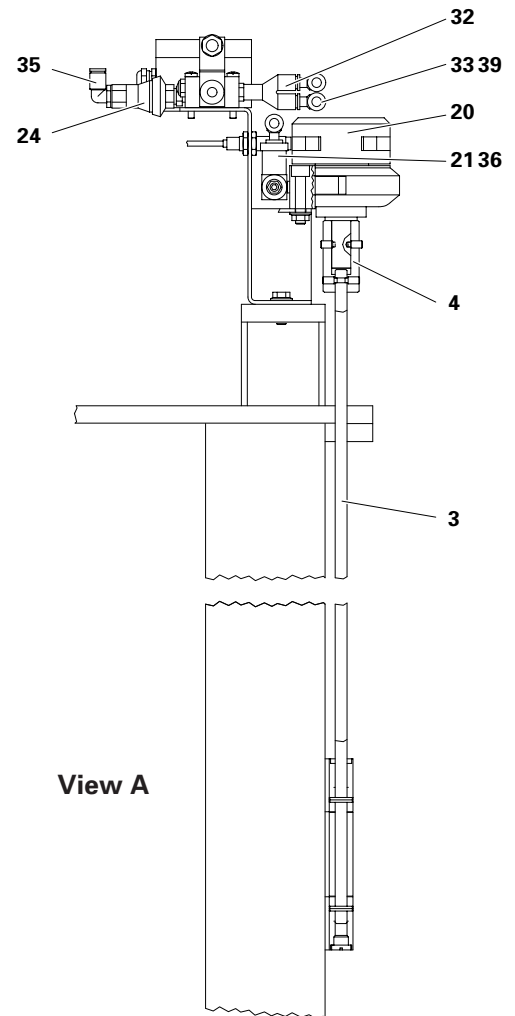
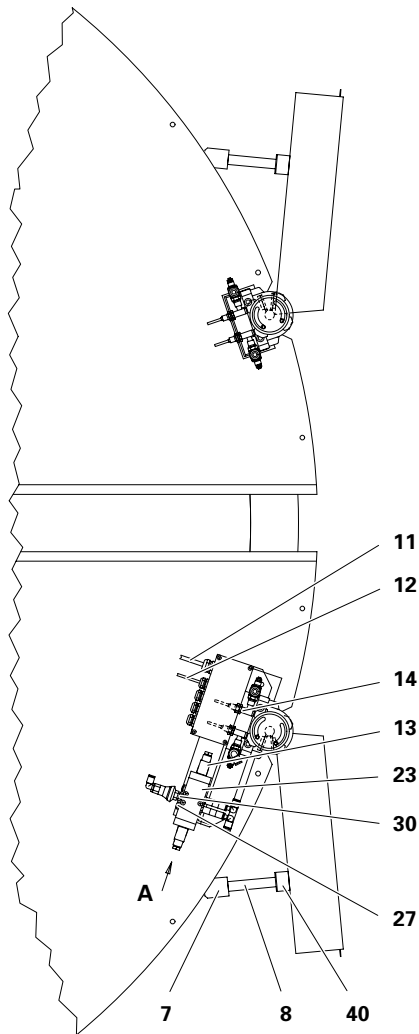
Figure 1

**Door Drive Unit**

3	Drive shaft - Type QCS-Hb	On request
	Drive shaft - Type QCS	On request
4	Connecting sleeve	373 761
6	Buffer bracket	373 834
7	Bracket	373 818
8	Spacer	373 826
11	Cable - 7x 0.75 mm <sup>2</sup>	100 536*
12	Cable - 4 x 1.00 mm <sup>2</sup>	100 579*
13	Valve cable - L = 0.7 m	373 605
14	Proximity switch	246 760#
20	Door drive	259 691#
21	Throttle-Check valve	259 098#
23	Solenoid - 220 VAC	259 705#
24	Inline Pressure Regulator - 6 bar	263 320
27	Silencer - 1/8"	251 305
30	Double nipple - 1/8"-1/4"	242 209
32	Y-Connection - 1/8"-ø 8 mm	253 936
33	Elbow connection - ø 8 mm-ø 8 mm	238 287
35	Elbow connection - 1/4"-ø 8 mm	254 029
36	Elbow joint - 1/8"-1/8"	237 604
39	Plastic hose - ø 8/ 6 mm - black - antistatic	103 756*
40	Rubber buffer - ø 40 x 28 mm-M8	248 592#

**Door Drive Unit**

**QCS STANDARD**



**QCS-HB (Manual coating)**

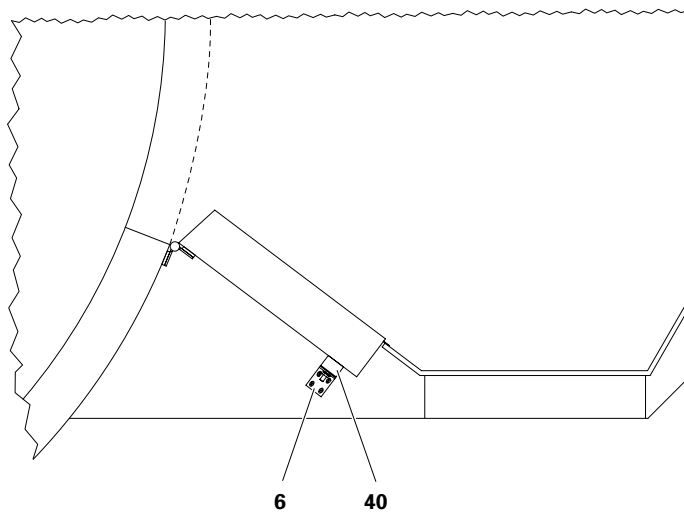


Figure 2

**Powder Gun Blow-Off Unit - complete**

1	Intermediate piece - complete.	381 110
2	End piece - complete.	381 160
3	Tube - ø 18 / 16 mm L=134 mm	381 144
4	Tube - ø 18 / 16 mm L=1950 mm	381 152
5	Compressed air distributor	382 361
10	Stop valve - 1/2"-1/2"	263 095
12	Elbow joint - M5-ø 6 mm	229 253
13	T-Connector - ø 6 mm	237 310
14	Adapter - ø 6 mm-ø 8 mm	246 808
15	Blind plug - 1/2"	259 306
16	Blind plug - 1"	243 612
27	Plastic hose - ø 6 / 4 mm - black	103 144*
30	Hose nozzle - ø 17 mm-1/2"	223 069
31	Solaflex hose - ø 16 / 3.5 mm	102 296*
32	Hose clamp - ø 17-25 mm	223 085
33	Copper wire - L00.750 mm <sup>2</sup> - bare	103 373*

**Only for booths without Powder Centre:**

40	Solenoid valve - 1/8" - NW5 - 230 VAC	253 952#
41	Adapter - 1/2"-1"	252 875
42	Adapter - 1/8"-1/2"	223 778
43	Double nipple - 1/8"-1/8"	202 258
44	Silencer -1/8"	251 305
45	Elbow joint - 1/8"-ø 6 mm	254 061

# Wear part

\* Indicate length required



**Powder Gun Blow-Off Unit - complete**

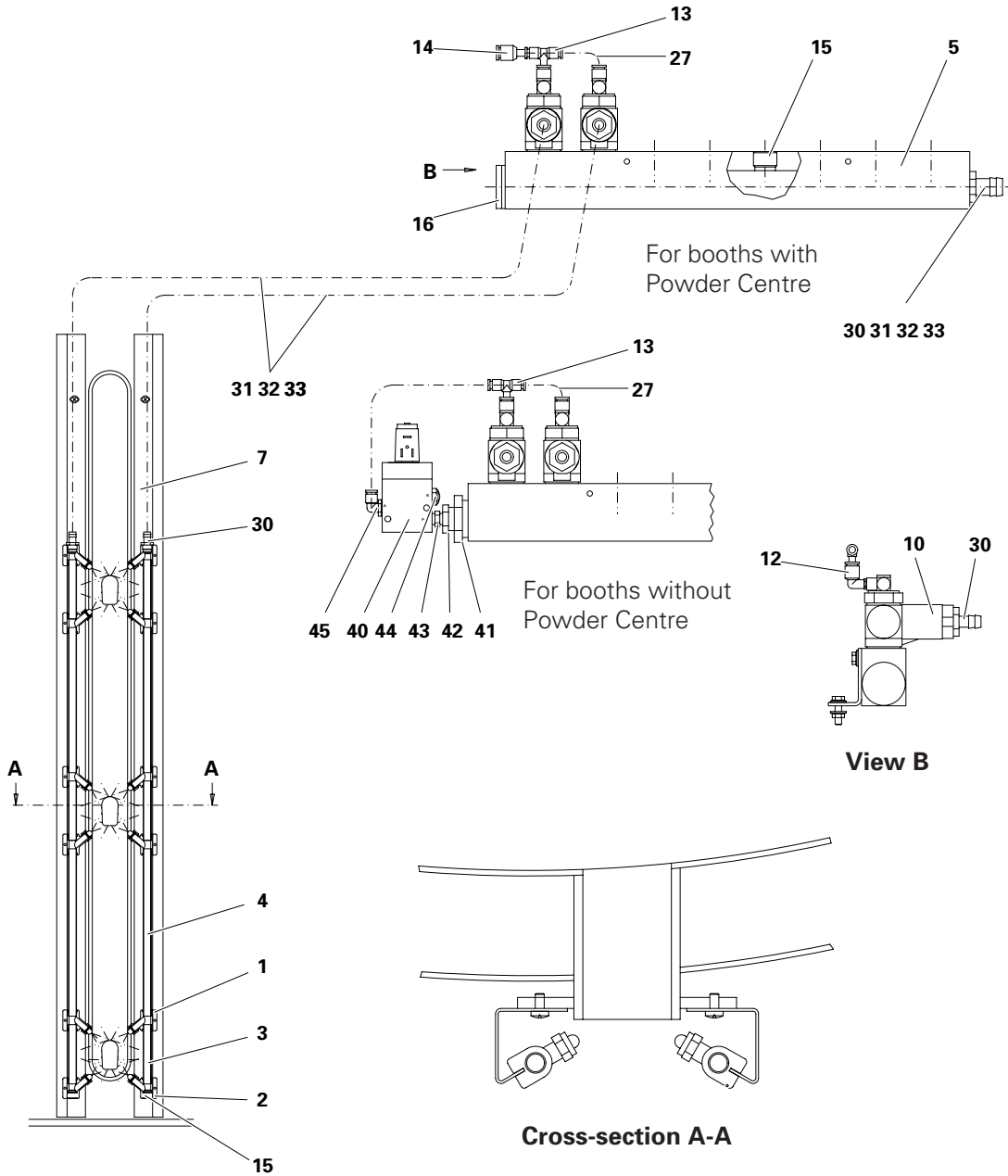


Figure 3

## **Booth Base**

2	Flap - right	On request
3	Flap - left	On request
10	Flap opening unit - complete	see page 10
15	Elbow joint for air channel	227 455

**Booth Base**

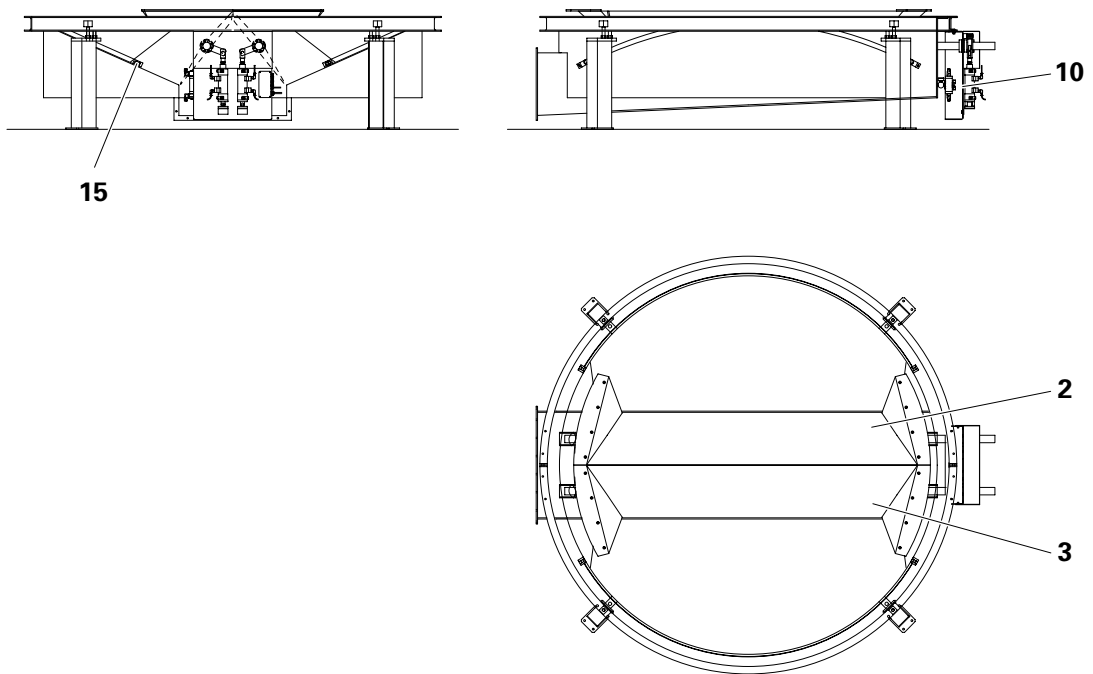


Figure 4

**Flap Control Unit**

3	Lever	386 367
4	Stop buffer support	386 375
5	Bearing disk	386 383#
10	Cylinder - ø 50 mm - ISO 6431	264 059
11	Cylinder switch	259 438
12	Connection cable with plug - 5 m/4 pin/M12/Elbow	259 420#
13	Pressure check valve	254 924
16	Forked yoke	259 446
17	Urelast buffer - ø 13.5 mm / 32 x 40 mm - PUR	264 083#
20	Solenoid valve	259 705#
21	Pressure regulating valve - 1/8" - 0-8 bar	239 623
22	Pressure gauge - 1/8" - 0-10 bar	203 289
23	Silencer - 1/8"	251 305
24	Double nipple - 1/8"-1/8"	202 258
25	Elbow joint - 1/8"-ø 8 mm	251 372
26	Y connection - 3 x ø 8 mm	251 259
27	Plastic hose - ø 8 / 6 mm - Antistatic	103 756*
29	Valve cable - L = 2 m	368 202*
31	Cable - 5 x 0.75 mm <sup>2</sup> - with screening	104 477*
32	Cable - 4 x 1 mm <sup>2</sup>	100 579*

# Wear part

\* Indicate length required

**Flap Control Unit**

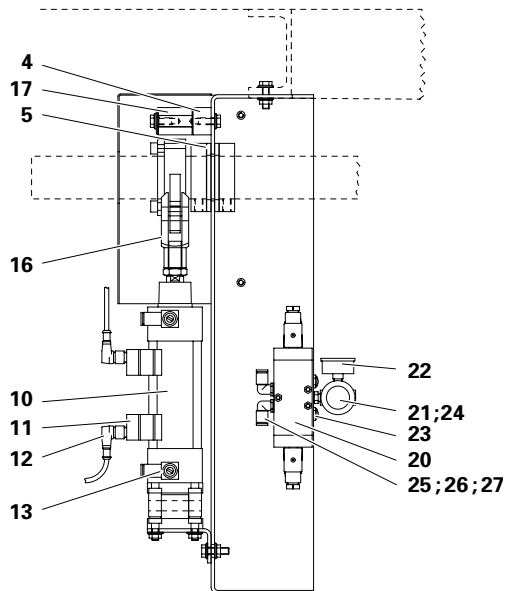
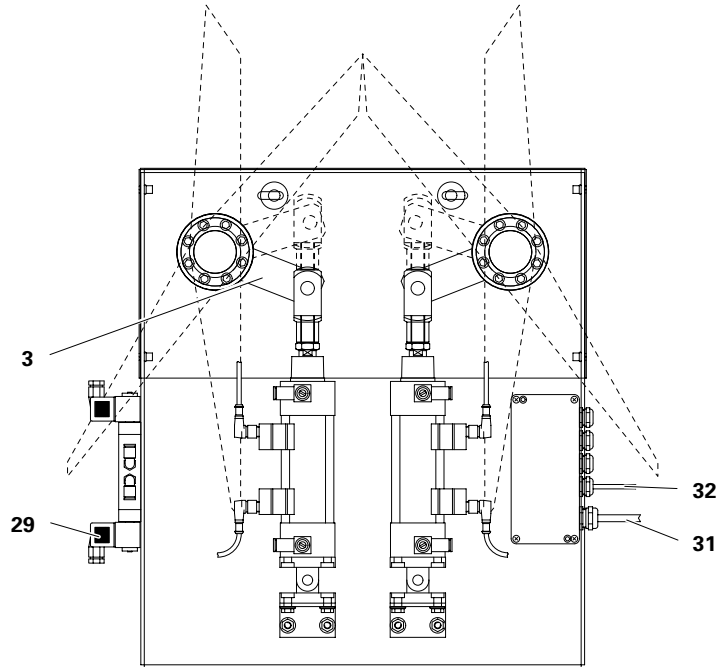


Figure 5

**Documentation Magic Cylinder - Spare Parts List**

© Copyright 2000 ITW Gema AG.  
All rights reserved.

This publication is protected by copyright. Unauthorized copying is prohibited by law. No part of this publication may be reproduced, photocopied, translated, stored on a retrieval system or transmitted in any form or by any means for any purpose, neither as a whole nor partially, without the express written consent of ITW Gema AG.

OptiTronic, OptiGun, EasyTronic, EasySelect, EasyFlow and SuperCorona are registered trademarks of ITW Gema AG.  
OptiMatic, OptiMove, OptiMaster, OptiPlus, OptiMulti and Gematic are trademarks of ITW Gema AG.

All other product names are trademarks or registered trademarks of their respective holders.

Reference is made in this manual to different trademarks or registered trademarks. Such references do not mean that the manufacturers concerned approve of or are bound in any form by this manual. We have endeavoured to retain the preferred spelling of the trademarks, and registered trademarks of the copyright holders.

To the best of our knowledge and belief, the information contained in this publication was correct and valid on the date of issue. ITW Gema AG makes no representations or warranties with respect to the contents or use of this publication, and reserves the right to revise this publication and make changes to its content without prior notice.

**Printed in Switzerland**

**ITW Gema AG**  
Mövenstrasse 17  
9015 St. Gall  
Switzerland

Phone: +41-71-313 83 00  
Fax: +41-71-313 83 83  
E-mail: info@itwgema.ch