



SERVICE MANUAL FOR CIRCLE DYNAMICS INC. DPT – DOYLE PRESSURE POT MOUNT MIXER DRIVE

WARNING

This product is intended for use in an industrial mix room environment. It is the user's responsibility to ensure that all forms of external energy are removed from the product prior to servicing to eliminate the risk of being injured by rotating parts during service.

FAILURE MODES

This product is only to be used in accordance with Circle Dynamics instructions for use and applications. Any other application may result in serious injury.



INSTALLATION (Refer to Fig. 1)

Fig. 1

- Install Loctite 242 (loctite blue) onto *setscrew* (3)
- Install *setscrew* (3) into *drive coupling* (2).
- Align *setscrew* (3) in *drive coupling* (2) with flat on air motor.
- Slide *drive coupling* (2) onto motor drive shaft. Tighten *setscrew* (3) onto motor drive shaft.
- Slide *DPT housing* (1) onto motor.
- Rotate the drive housing until the three mounting holes line up with the air motor holes.
- Install *mounting bolts* (4) and *washers* (5) and tighten securely.

Connect air supply to appropriate port and adjust flow control to set speed.

REBUILD INSTRUCTIONS FOR CIRCLE DYNAMICS DPT DRIVE UNIT

DISASSEMBLY

- 1) Disconnect any energy source and remove motor and drive unit from pressure pot.
- 2) Remove *mounting bolts* (4) and *washers* (5) from air motor and remove *DPT housing* (1) from the air motor.
- 3) Remove *setscrew* (3) from *drive coupling* (2).
- 4) Remove *drive coupling* (2) from the air motor.

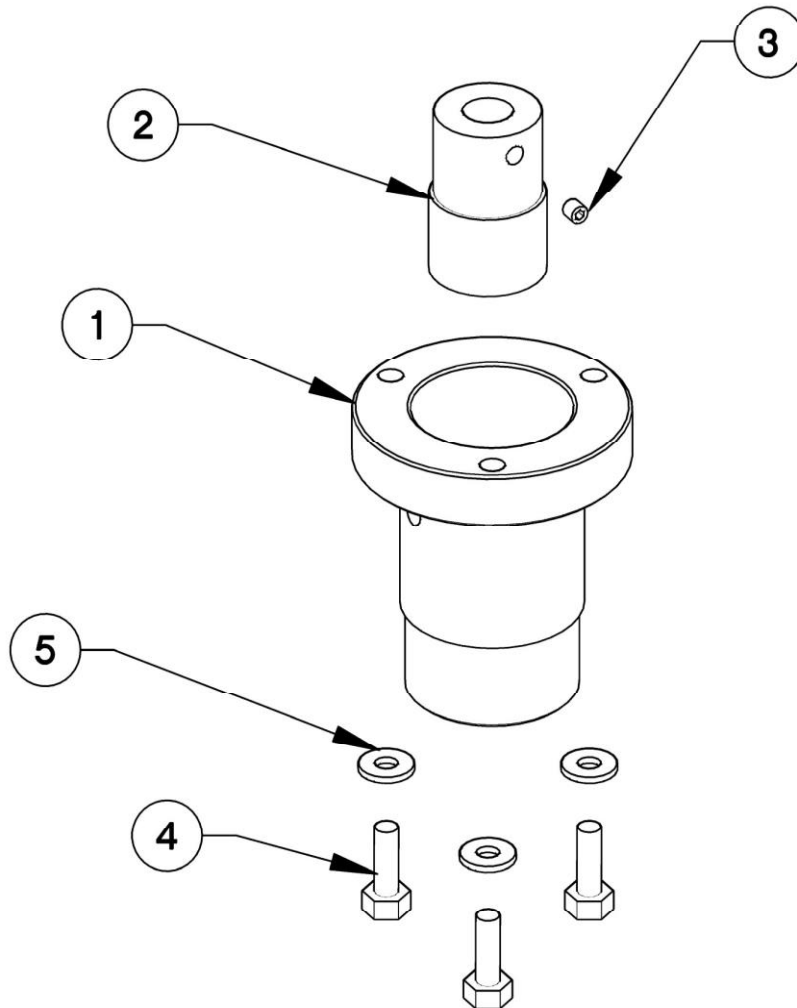


Fig. 2

ASSEMBLY

1. Install Loctite 242 (loctite blue) onto *setscrew* (3)
2. Install *setscrew* (3) into *drive coupling* (2).
3. Align *setscrew* (3) in *drive coupling* (2) with flat on air motor.
4. Slide *drive coupling* (2) onto motor drive shaft. Tighten *setscrew* (3) onto motor drive shaft.
5. Slide *DPT housing* (1) onto motor.
6. Rotate the drive housing until the three mounting holes line up with the air motor holes.
7. Install *mounting bolts* (4) and *washers* (5) and tighten securely.

Refer to installation instructions for assembly to Air Motor.



KEY	PART #	QTY.	DESCRIPTION
1	60191	1	DPT HOUSING
2	60311	1	COUPLING
3	92695	1	SET SCREW
4	91287	3	HEX BOLT
5	93475	3	WASHER

TECHNICAL DATA


Maximum Speed: 1100 RPM

Housing: Anodized Aluminum

Drive coupling: 303 S.S.

THE CIRCLE DYNAMICS INC. WARRANTY AND DISCLAIMERS

Items sold by Circle Dynamics Inc. and or all Doyle Products are warranted to be free from defects in material and workmanship for a period of one year from the date of purchase, provided said items are used according to Doyle Products said usages. Circle Dynamics Inc. liability is limited to the repair of, refund of purchase price paid for, or replacement in kind of at the sole option of Circle Dynamics Inc., any items proved defective, provided the allegedly defective items are returned to Circle Dynamics Inc. prepaid. There are no other warranties, expressed or implied, except as stated herein. There are no implied warranties of merchantability of fitness for a particular purpose, which are damages, if the possibility of such incidental or consequential damages has been made know to Circle Dynamics Inc., or is the direct result of a failure of a Doyle Product. Circle Dynamics Inc. reserves the right to discontinue the manufacture of any product or change product materials, design or specifications without notice.

<p>Patent Pending Copyright 2011 Circle Dynamics Inc. All rights reserved. Models and specifications subject to change without notice.</p>	 <p>CIRCLE DYNAMICS INC. DOYLE PRODUCTS MFG.</p> <p>Circle Dynamics Inc. 171 A Rink Street, Suite 150 Peterborough, Ontario, Canada K9J 2J6 Tel: 1-705-768-3338 Fax: 1-705-740-1975 Email: jdoyle@circledynamicsinc.com Web: www.circledynamicsinc.com</p>
--	---