



AX85SD Air Motor Assembly

Patent 7,603,855

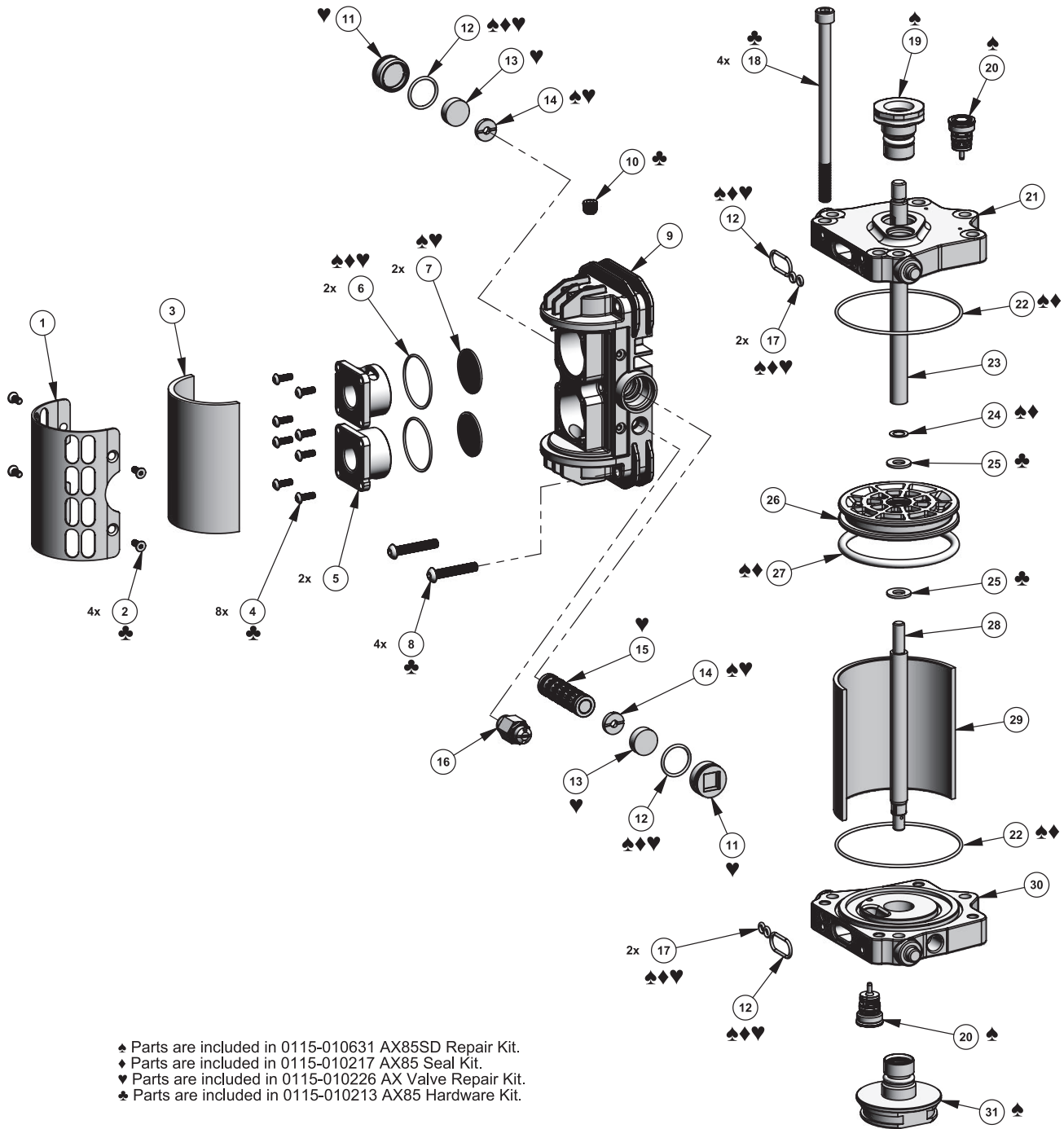


SPECIFICATIONS	
Maximum air inlet pressure:	116 psi (8 bar)
Maximum recommended continuous cycle rate:	20 cycles/min
Air consumption @ 20 cycles/min and 116 psi (8 bar) air inlet pressure:	5.2 SCFM (147 LPM)
Maximum operating temperature:	160°F (71°C)
Air inlet connection:	3/8" BSP (F)
Piston diameter:	3.3 in (85 mm)
Stroke length:	3 in. (75 mm)
Sound level:	96.2 dB
Weight:	6.5 lbs (2.9 kg)

Replaces
Part Sheet
77-2937R

Part
Sheet
77-2937R-1

AX85SD AIR MOTOR ASSEMBLY



AX85SD AIR MOTOR ASSEMBLY

ITEM NO.	PART NUMBER	DESCRIPTION	QTY.
1	0115-010023	EXHAUST COVER SCREEN	1
2	0115-010024 ♣	M4 x 10 FLAT HEAD SCREW	4
3	0115-010022	EXHAUST COVER	1
4	0115-010073 ♣	M4 X 12 BUTTON HEAD SCREW	8
5	0115-010019	QUICK EXHAUST VALVE CAGE	2
6	0115-010021 ♠♦♥	O-RING	2
7	0115-010020 ♠♥	DIAPHRAGM	2
8	0115-010026 ♣	M6 x 35 BUTTON HEAD SCREW	4
9	0115-010097	VALVE BLOCK ASSEMBLY	1
10	0115-010107 ♣	1/8 BSPT PIPE PLUG	1
11	0115-010018 ♥	VALVE BLOCK END CAP	2
12	0115-010049 ♠♦♥	O-RING	4
13	0115-010017 ♥	MAGNET	2
14	0115-010016 ♠♥	BUMPER	2
15	0115-010015 ♥	SPOOL AND SLEEVE ASSEMBLY	1
16	0114-014774	SAFETY VALVE	1
17	0115-010051 ♠♦♥	O-RING	4
18	0115-010029 ♣	M8 X 135 CAP SCREW	4
19	0115-010392 ♠	MOTOR ROD CARTRIDGE ASSEMBLY	1
20	0115-010037 ♠	POPPET ASSEMBLY	2
21	0115-010328	UPPER END CAP	1
22	0115-010050 ♠♦	O-RING	2
23	0115-010395	UPPER MOTOR ROD	1
24	0115-010036 ♠♦	SEALING RING	1
25	0115-010035 ♣	M8 WASHER	2
26	0115-010336	PISTON ASSEMBLY	1
27	0114-014466 ♠♦	O-RING	1
28	0115-010034	MOTOR ROD	1
29	0115-010003	CYLINDER	1
30	0115-010006	LOWER END CAP	1
31	0115-010657 ♠	MOTOR ROD CARTRIDGE ASSEMBLY	1

♠ Parts are included in 0115-010631 AX85SD Repair Kit.

♦ Parts are included in 0115-010217 AX85 Seal Kit.

♥ Parts are included in 0115-010226 AX Valve Repair Kit.

♣ Parts are included in 0115-010213 AX85 Hardware Kit.

Items 1 through 16 also available as an assembly: 0115-010660

In this part sheet, the words **WARNING**, **CAUTION** and **NOTE** are used to emphasize important safety information as follows:

Hazards or unsafe practices which could result in severe personal injury, death or substantial property damage.

▲ CAUTION
Hazards or unsafe practices which could result in minor personal injury, product or property damage.

NOTE
Important installation, operation or maintenance information.

Read the following warnings before using this equipment.



READ THE MANUAL
 Before operating finishing equipment, read and understand all safety, operation and maintenance information provided in the operation manual.



WEAR SAFETY GLASSES
 Failure to wear safety glasses with side shields could result in serious eye injury or blindness.



DE-ENERGIZE, DEPRESSURIZE, DISCONNECT AND LOCK OUT ALL POWER SOURCES DURING MAINTENANCE
 Failure to De-energize, disconnect and lock out all power supplies before performing equipment maintenance could cause serious injury or death.



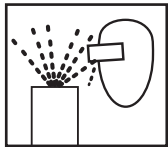
OPERATOR TRAINING
 All personnel must be trained before operating finishing equipment.



EQUIPMENT MISUSE HAZARD
 Equipment misuse can cause the equipment to rupture, malfunction, or start unexpectedly and result in serious injury.



KEEP EQUIPMENT GUARDS IN PLACE
 Do not operate the equipment if the safety devices have been removed.



PROJECTILE HAZARD
 You may be injured by venting liquids or gases that are released under pressure, or flying debris.



PINCH POINT HAZARD
 Moving parts can crush and cut. Pinch points are basically any areas where there are moving parts.



AUTOMATIC EQUIPMENT
 Automatic equipment may start suddenly without warning.



INSPECT THE EQUIPMENT DAILY
 Inspect the equipment for worn or broken parts on a daily basis. Do not operate the equipment if you are uncertain about its condition.



NEVER MODIFY THE EQUIPMENT
 Do not modify the equipment unless the manufacturer provides written approval.



KNOW WHERE AND HOW TO SHUT OFF THE EQUIPMENT IN CASE OF AN EMERGENCY



PRESSURE RELIEF PROCEDURE
 Always follow the pressure relief procedure in the equipment instruction manual.



NOISE HAZARD
 You may be injured by loud noise. Hearing protection may be required when using this equipment.



HIGH PRESSURE CONSIDERATION
 High pressure can cause serious injury. Relieve all pressure before servicing. Spray from the spray gun, hose leaks, or ruptured components can inject fluid into your body and cause extremely serious injury.



STATIC CHARGE
 Fluid may develop a static charge that must be dissipated through proper grounding of the equipment, objects to be sprayed and all other electrically conductive objects in the dispensing area. Improper grounding or sparks can cause a hazardous condition and result in fire, explosion or electric shock and other serious injury.

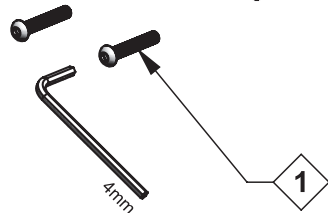
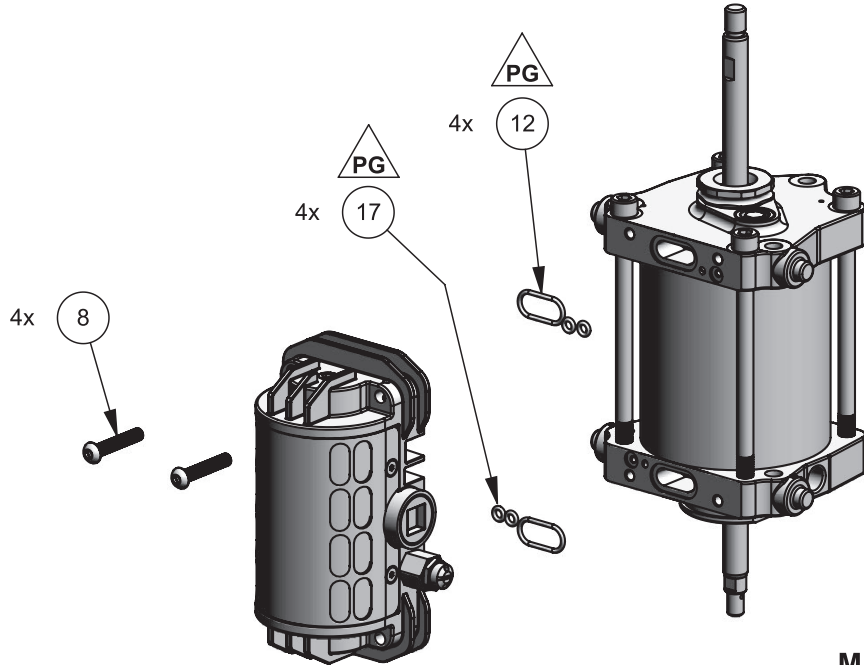


PROP 65 WARNING
 WARNING: This product contains chemicals known to the State of California to cause cancer and birth defects or other reproductive harm.

IT IS THE RESPONSIBILITY OF THE EMPLOYER TO PROVIDE THIS INFORMATION TO THE OPERATOR OF THE EQUIPMENT.

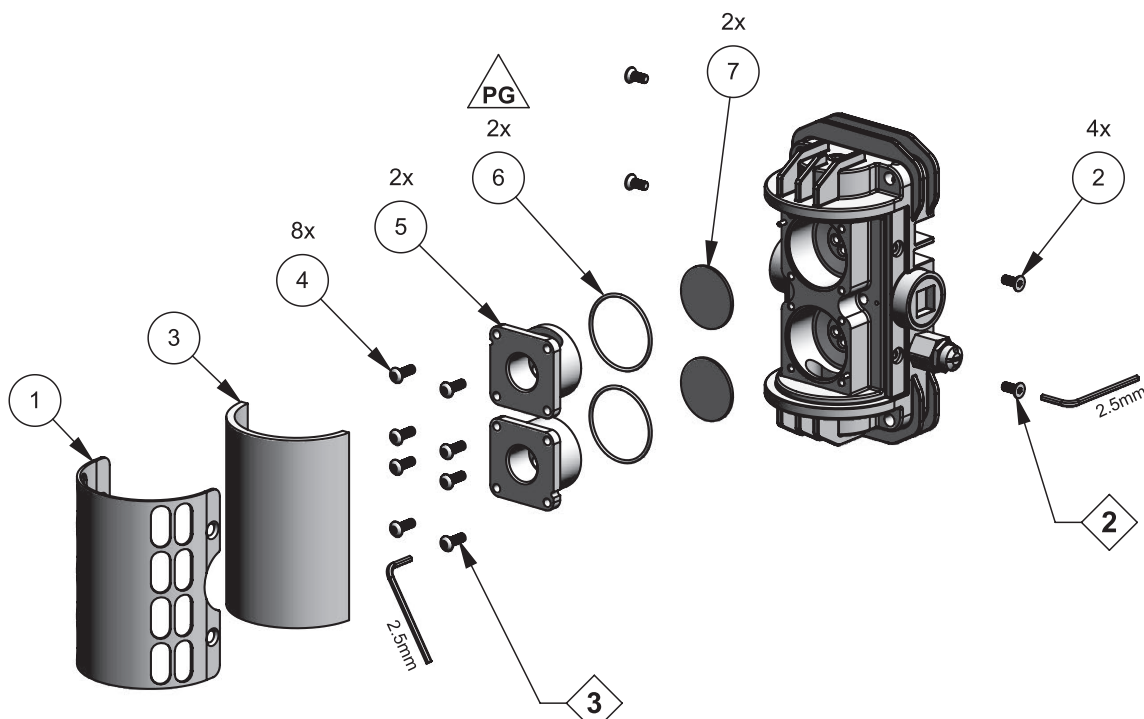
FOR FURTHER SAFETY INFORMATION REGARDING BINKS AND DEVILBISS EQUIPMENT, SEE THE GENERAL EQUIPMENT SAFETY BOOKLET (77-5300).

AX85SD AIR MOTOR ASSEMBLY

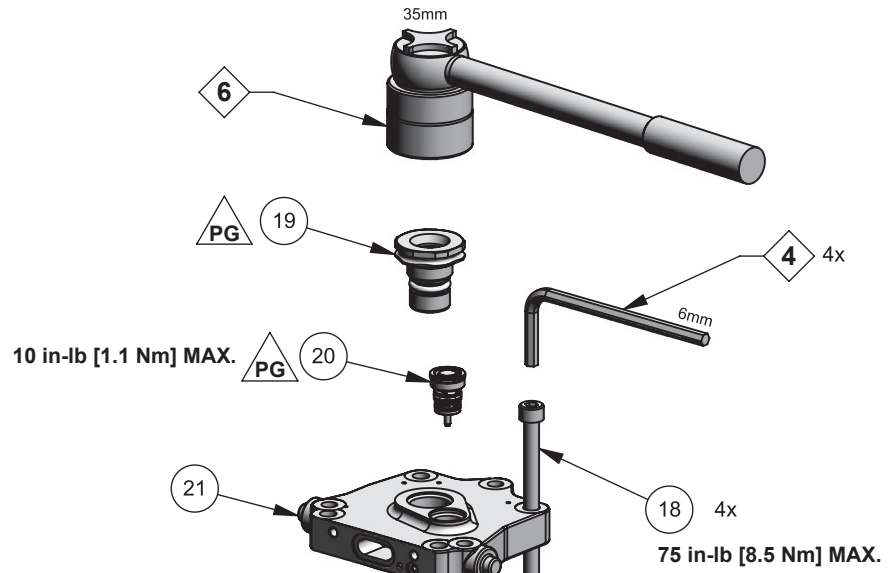


MAINTENANCE SYMBOLS:

- (#) = ITEM NUMBER
- ◇# = MAINTENANCE ORDER
Reverse for assembly
- △PG = PETROLEUM GREASE/JELLY
- △TS = THREAD SEALANT
PTFE tape



AX85SD AIR MOTOR ASSEMBLY – MAINTENANCE



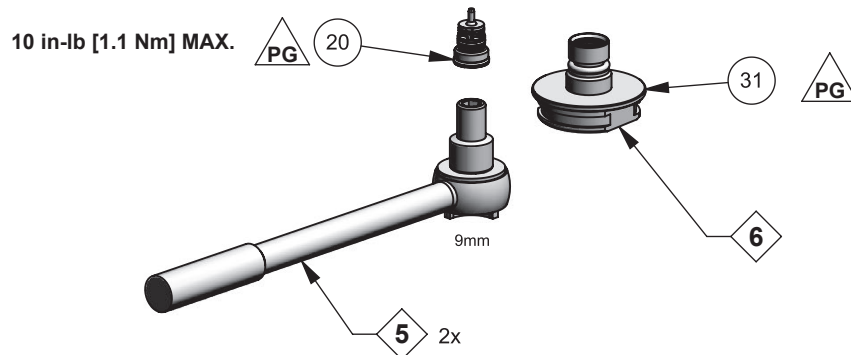
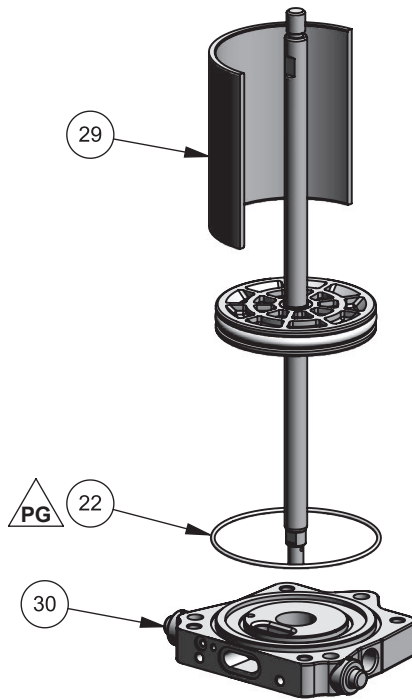
MAINTENANCE SYMBOLS:

= ITEM NUMBER

= MAINTENANCE ORDER
Reverse for assembly


PG = PETROLEUM GREASE/JELLY

TS = THREAD SEALANT
PTFE tape

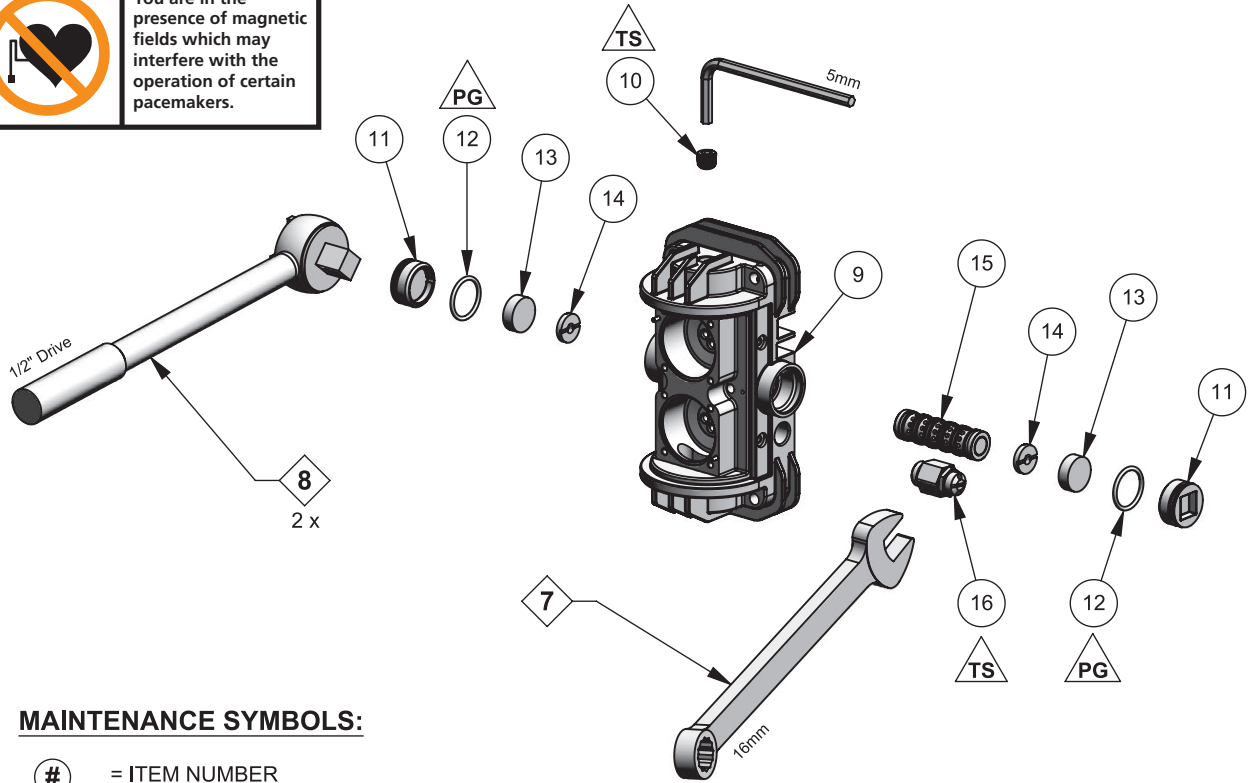


AX85SD AIR MOTOR ASSEMBLY – MAINTENANCE

⚠ DANGER



You are in the presence of magnetic fields which may interfere with the operation of certain pacemakers.

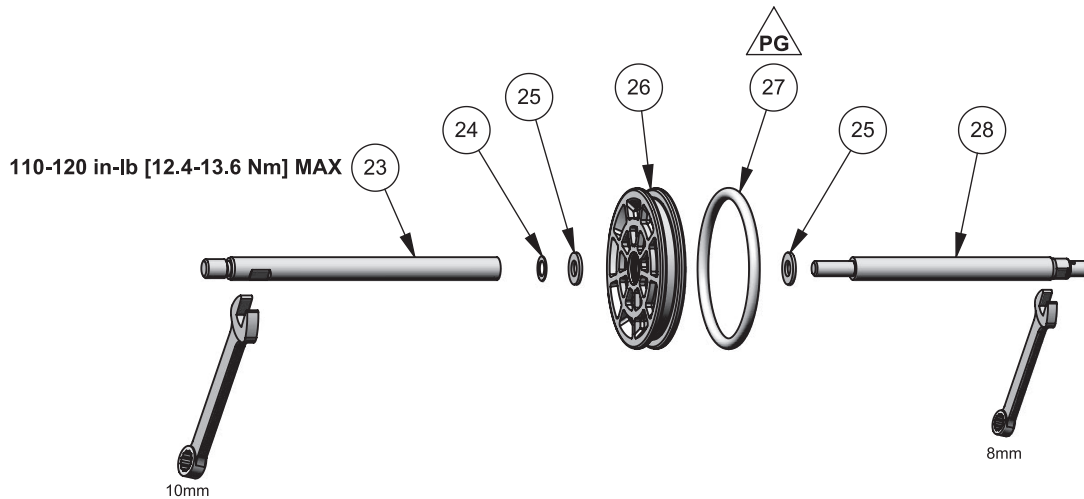


MAINTENANCE SYMBOLS:

- #** = ITEM NUMBER
- #** = MAINTENANCE ORDER
Reverse for assembly
- PG** = PETROLEUM GREASE/JELLY
- TS** = THREAD SEALANT
PTFE tape

NOTE
Spool and sleeve assembly (15) is a matched set and cannot be interchanged with other spool and sleeve assemblies.

⚠ CAUTION
Take care when handling the magnets (13). Avoid getting magnets in close proximity to each other. Injury or damage to magnets may result.



AX85SD AIR MOTOR ASSEMBLY – TROUBLESHOOTING

PROBLEM	CAUSE	SOLUTION
Pump will not start	No compressed air. System is blocked.	Check compressed air supply. Clear the blockage.
Erratic operation of air motor, air motor stops	Worn poppet assemblies. Worn or dirty spool and sleeve assembly.	Replace poppet assemblies. Clean or replace the spool and sleeve assembly as necessary.
Continuous air leak from the exhaust	Worn poppet assemblies. Worn piston seal. Worn diaphragm.	Replace poppet assemblies. Replace piston seal. Replace diaphragm.

WARRANTY

This product is covered by Binks' 1 Year Limited Warranty.

Binks Sales and Service: www.binks.com

BINKS®

U.S.A./Canada Customer Service
195 Internationale Blvd.
Glendale Heights, IL 60139
630-237-5000

Toll Free Customer Service
and Technical Support
800-992-4657
Toll Free Fax
888-246-5732

77-2937R-1 Revisions: Revised illustrations;
(P3) Revised Parts List; .