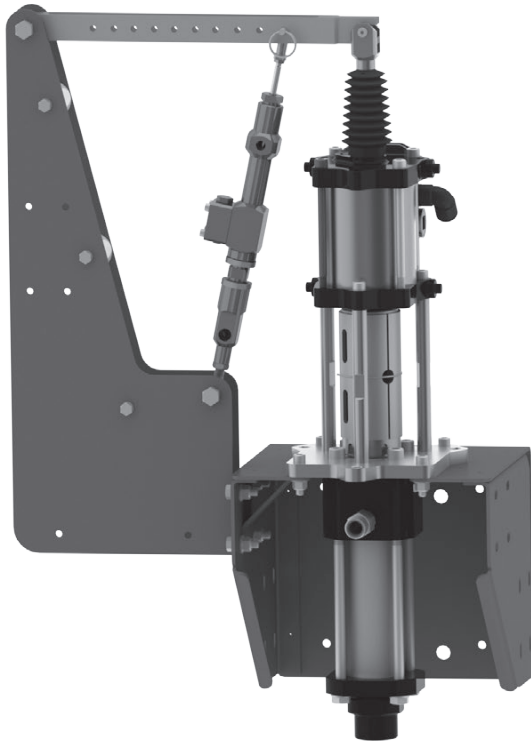
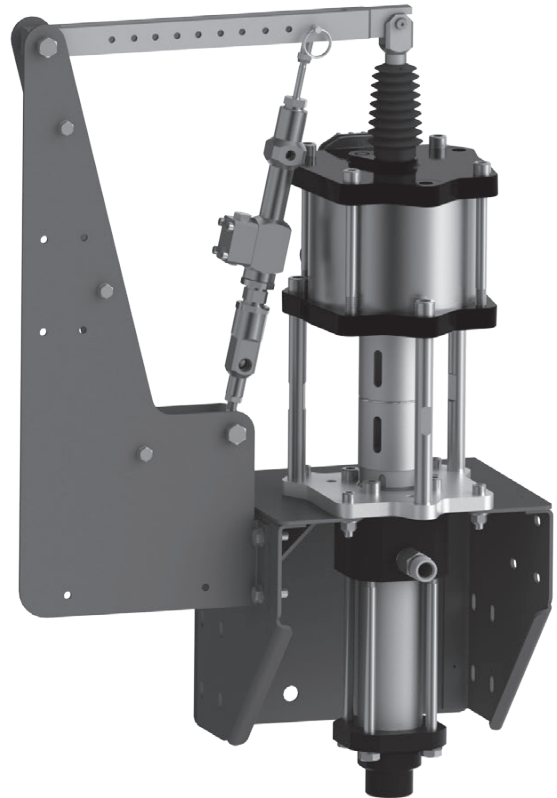


MODELS: CX2006HC 6.5:1
CX2017HC 17:1



CX2006HC



CX2017HC

SPECIFICATIONS

	CX2006HC	CX2017HC
Ratio:	6.5:1	17:01
Maximum air inlet pressure:	116 psi (8 bar)	116 psi (8 bar)
Maximum recommended continuous cycle rate:	20 cycles/min	20 cycles/min
Air consumption @ 20 cycles/min and 116 psi (8 bar) air inlet pressure:	5.2 SCFM (147 LPM)	17.6 SCFM (498 LPM)
Maximum fluid pressure:	750 psi (52 bar)	1970 psi (136 bar)
Displacement per cycle:	4.3 oz (127 cc)	4.3 oz (127 cc)
Output @ 60 cycles/min:	2.0 gal/m (7.6 l/m)	2.0 gal/m (7.6 l/m)
Maximum operating temperature:	160°F (71°C)	160°F (71°C)
Air inlet connection:	3/8" BSP (F)	3/8" BSP (F)
Piston diameter:	3.3 in (85 mm)	5.5 in (140 mm)
Stroke length:	3 in (75 mm)	3 in (75 mm)
Sound level:	96.2 dB	97.3 dB
Fluid inlet connection:	1 1/4" NPT (M) & 1" NPT (F)	1 1/4" NPT (M) & 1" NPT (F)
Fluid outlet connection:	1/2" NPT/NPS (M)	1/2" NPT/NPS (M)

In this part sheet, the words **WARNING**, **CAUTION** and **NOTE** are used to emphasize important safety information as follows:

⚠ WARNING
 Hazards or unsafe practices which could result in severe personal injury, death or substantial property damage.

⚠ CAUTION
 Hazards or unsafe practices which could result in minor personal injury, product or property damage.

NOTE
 Important installation, operation or maintenance information.

⚠ WARNING

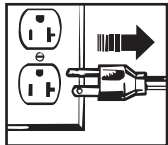
Read the following warnings before using this equipment.



READ THE MANUAL
 Before operating finishing equipment, read and understand all safety, operation and maintenance information provided in the operation manual.



WEAR SAFETY GLASSES
 Failure to wear safety glasses with side shields could result in serious eye injury or blindness.



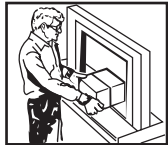
DE-ENERGIZE, DEPRESSURIZE, DISCONNECT AND LOCK OUT ALL POWER SOURCES DURING MAINTENANCE
 Failure to De-energize, disconnect and lock out all power supplies before performing equipment maintenance could cause serious injury or death.



OPERATOR TRAINING
 All personnel must be trained before operating finishing equipment.



EQUIPMENT MISUSE HAZARD
 Equipment misuse can cause the equipment to rupture, malfunction, or start unexpectedly and result in serious injury.



KEEP EQUIPMENT GUARDS IN PLACE
 Do not operate the equipment if the safety devices have been removed.



HIGH PRESSURE CONSIDERATION
 High pressure can cause serious injury. Relieve all pressure before servicing. Spray from the spray gun, hose leaks, or ruptured components can inject fluid into your body and cause extremely serious injury.



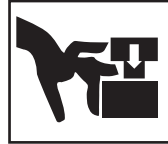
PLURAL COMPONENT MATERIALS HAZARD
 Because of the vast number of chemicals that could be used and their varying chemical reactions, the buyer and user of this equipment must determine all facts relating to the materials used, including any of the potential hazards involved.



NOISE HAZARD
 You may be injured by loud noise. Hearing protection may be required when using this equipment.



FIRE AND EXPLOSION HAZARD
 Improper equipment grounding, poor ventilation, open flame or sparks can cause hazardous conditions and result in fire or explosion and serious injury.



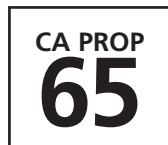
PINCH POINT HAZARD
 Moving parts can crush and cut. Pinch points are basically any areas where there are moving parts.



KNOW WHERE AND HOW TO SHUT OFF THE EQUIPMENT IN CASE OF AN EMERGENCY



PRESSURE RELIEF PROCEDURE
 Always follow the pressure relief procedure in the equipment instruction manual.



PROP 65 WARNING
 WARNING: This product contains chemicals known to the State of California to cause cancer and birth defects or other reproductive harm.

IT IS THE RESPONSIBILITY OF THE EMPLOYER TO PROVIDE THIS INFORMATION TO THE OPERATOR OF THE EQUIPMENT.

FOR FURTHER SAFETY INFORMATION REGARDING BINKS AND DEVILBISS EQUIPMENT, SEE THE GENERAL EQUIPMENT SAFETY BOOKLET (77-5300).

⚠ WARNING



HIGH PRESSURE CAN CAUSE SERIOUS INJURY IF EQUIPMENT IS INSTALLED OR USED INCORRECTLY—READ, UNDERSTAND, AND OBSERVE ALL WARNINGS AND INSTRUCTIONS IN THIS MANUAL.

INSTALL, OPERATE OR SERVICE THIS EQUIPMENT ONLY AFTER ALL INSTRUCTIONS ARE CLEARLY UNDERSTOOD.

It is the responsibility of the employer to place this information into the hands of the operator.

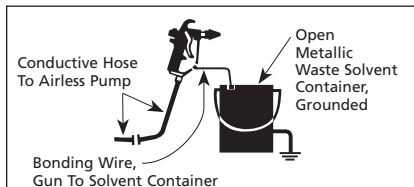
⚠ WARNING
 Hazards or unsafe practices which could result in severe personal injury, death or substantial property damage.

⚠ CAUTION
 Hazards or unsafe practices which could result in minor personal injury, product or property damage.

NOTE
 Important installation, operation or maintenance information.

AVOID STATIC SPARKING

1. Use Binks **NO-WIRE** conductive hose in all airless spraying operations. Be sure the gun and hose have continuity.
2. Make sure the pump is grounded. **NEVER** operate the unit when it is on a non-grounded platform.
3. When flushing or cleaning with a combustible solvent, always use an open metallic container for receiving the waste solvent. Ground the solvent receptacle.
4. **ALWAYS** remove spray tip when flushing the system. Operate the pump at the lowest possible pressure.



GENERAL WARNINGS

1. **NEVER** leave a pressurized sprayer unattended.
2. Periodically inspect all hoses for leaks and/or abrasions and tighten all connections before use. **DO NOT ATTEMPT TO REPAIR** a defective hose. **REPLACE** it with another conductive hose.
3. **ALWAYS** relieve pressure in the system by turning bypass valve to **BYPASS** or triggering spray gun before disassembly of any component parts.

CAUTION
 Never store de-ionized, distilled, reverse osmosis or any pure grade of water in the pump. These fluids may cause corrosion.

NOTE
 BINKS is not responsible for misapplication of pumps. Consult your BINKS representative for application assistance.

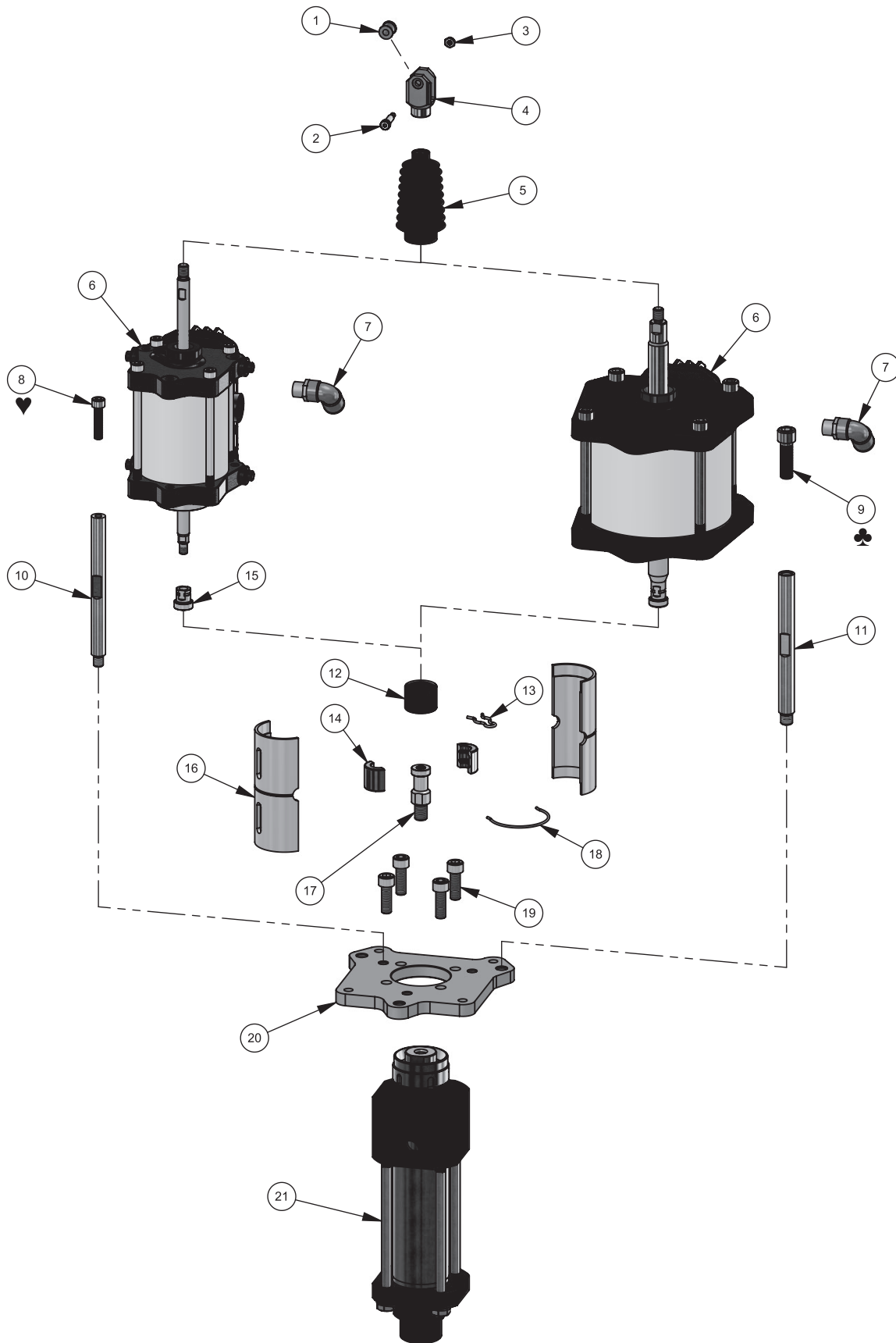
NOTE
 Be sure that all fluids, solvents and fillers to be used are chemically and physically compatible with wetted parts in the pump. Consult your BINKS representative for pump materials of constructions and compatibility information. Consult the fluid manufacture for information regarding the fluids to be used.

REPLACEMENT PARTS

The pump is designed to use authorized parts only. When using this pump with parts that do not comply with the minimum specifications and safety devices of Binks, the user assumes all risks and liabilities.

⚠ WARNING
EXCESSIVE AIR PRESSURE
 Can cause personal injury, pump damage or property damage. Do not exceed maximum inlet air pressure as stated on motor model plate.

MODELS CRX2006 & CRX2017HC CENTURY BARE PUMP ASSEMBLIES



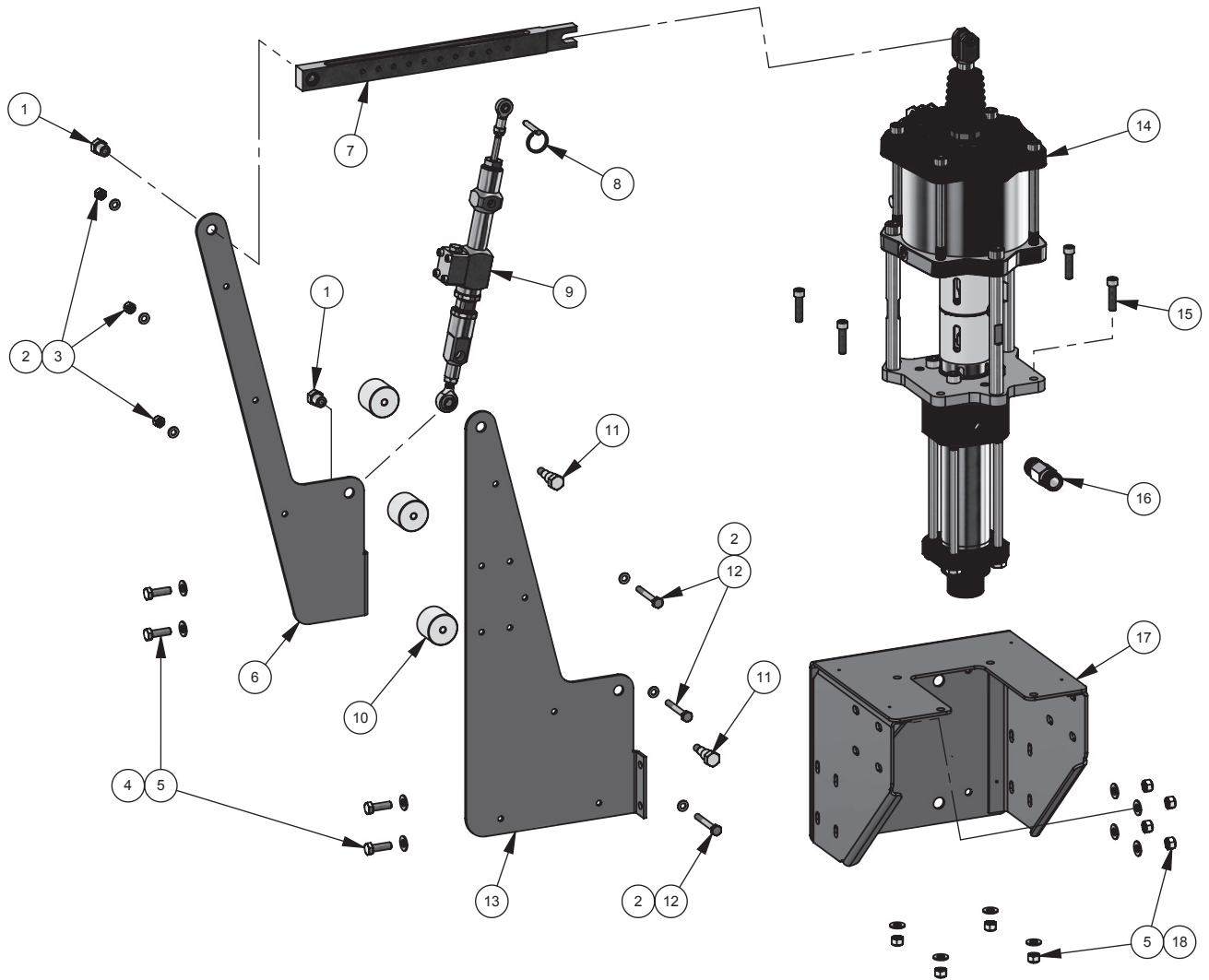
MODELS CRX2006 & CRX2017HC CENTURY BARE PUMP ASSEMBLIES

ITEM NO.	PART NUMBER	DESCRIPTION	QTY. CRX2006HC	QTY. CRX2017HC	PART SHEET
1	101-9425	BEARING	1	1	
2	20-6869	SHOULDER SCREW	1	1	
3	20-6877	ACORN NUT	1	1	
4	101-9415	CLEVIS	1	1	
5	101-9444	BELLOWS	1	1	
6	AX140SD	AX140SD AIR MOTOR ASSEMBLY	—	1	77-2938
	AX85SD	AX85SD AIR MOTOR ASSEMBLY	1	—	77-2937
7	85-516	SWIVEL ELBOW	1	1	
8	0115-010001 ♡	SOCKET HEAD CAP SCREW	3	—	
9	0115-010114 ♣	SOCKET HEAD CAP SCREW	-	3	
10	101-9414	AX85SD STANDOFF	3	—	
11	101-9423	AX140SD STANDOFF	—	3	
12	101-9422	SPLIT COLLAR SLEEVE	1	1	
13	20-6871	RETAINING CLIP	1	1	
14	101-9421	MOTOR ROD SPLIT COLLAR	1	1	
15	101-9419	AX85 QD ADAPTER	1	-	
16	101-9440	SHROUD	1	1	
17	101-9420	PUMP ROD QD ADAPTER	1	1	
18	101-9439	SHROUD CLIP	1	1	
19	20-6872	SOCKET HEAD CAP SCREW	4	4	
20	101-9449	ADAPTER PLATE	1	1	
21	FRX20HC	FRX20HC FLUID SECTION ASSEMBLY	1	1	77-2939

♡ Parts are included in 0115-010213 AX85 Hardware Kit.

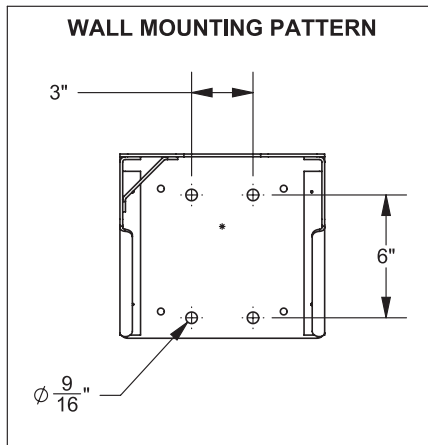
♣ Parts are included in 0115-010300 AX140 Hardware Kit.

MODELS CX2006 & CX2017HC CENTURY PUMP ASSEMBLIES

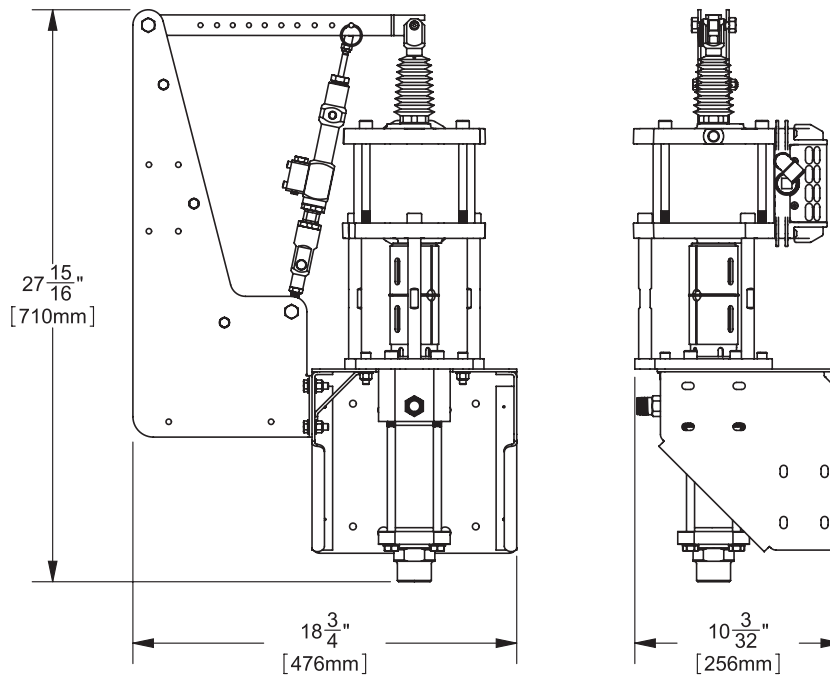


MODELS CX2006 & CX2017HC CENTURY PUMP ASSEMBLIES

ITEM NO.	PART NUMBER	DESCRIPTION	QTY. CX2006HC	QTY. CX2017HC	PART SHEET
1	101-9433	NUT	2	2	
2	20-263-1	FLAT WASHER	6	6	
3	20-6042	NYLOK HEX NUT	3	3	
4	20-376-1	HEX HEAD CAP SCREW	4	4	
5	20-264-1	FLAT WASHER	12	12	
6	101-9429	REAR CATALYST PUMP BRACKET	1	1	
7	101-9437	RATIO ARM ASSEMBLY	1	1	
8	20-6873	QUICK RELEASE PIN	1	1	
9	101-9450	CATALYST PUMP ASSEMBLY	1	1	77-2943
10	101-9426	SPACER	3	3	
11	101-9427	STUD	2	2	
12	237-176	HEX HEAD CAP SCREW	3	3	
13	101-9430	FRONT CATALYST PUMP BRACKET	1	1	
14	CRX2006HC	AX85SD & FRX20HC BARE PUMP ASSEMBLY	1	—	
	CRX2017HC	AX140SD & FRX20HC BARE PUMP ASSEMBLY	—	1	
15	20-3071-1	ALLEN HEAD CAP SCREW	4	4	
16	72-2337	DM NIPPLE	1	1	
17	101-9424	BRACKET ASSEMBLY	1	1	
18	237-205	NYLOK HEX NUT	8	8	



CENTURY PUMP DIMENSIONS



WARRANTY

This product is covered by Binks' 1 Year Limited Warranty.

Binks Sales and Service: www.binks.com

BINKS.

U.S.A./Canada Customer Service
195 Internationale Blvd.
Glendale Heights, IL 60139
630-237-5000

Toll Free Customer Service
and Technical Support
800-992-4657

Toll Free Fax
888-246-5732

77-2940R-1 Revisions: Trademark updates;
(P8) Updated contact information.