

MagicCompact EquiFlow

The efficient solution
with superior EquiFlow technology

Systems for automatic powder coating

Gema's most advanced powder coating system offers you performance and value.

- precise process control, leading edge electrostatic and the most advanced booth design
- perfect coating conditions inside the booth as well as on pre- and postcoating platforms
- quick color changes

The logo consists of the word "Gema" in a bold, black, sans-serif font. A red curved line is positioned above the letter "G", starting from the top left and curving towards the top right.

The Global Leader in
Powder Coating Technology

A perfect balance between performance and flexibility

An intelligent air distribution

The air extraction is concentrated where it is needed most, at the entrance and exit of the booth. This prevents powder escaping to the atmosphere and provides ideal airflow for the external manual coating platforms.

Perfect coating conditions

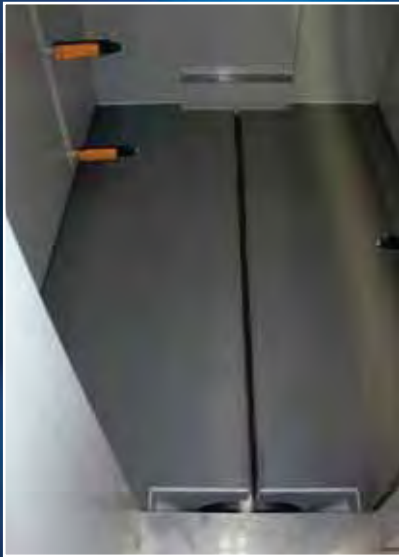
The airflow in the central part of the booth is very gentle. These ideal conditions are the key to control the powder application process and achieve good penetration and regular film thickness.

Quick color changes

The use of non-conductive plastic material and the self-cleaning floor avoid powder accumulations in the booth. One operator can complete the cleaning process in a snapshot, even without entering the booth.

EquiFlow Technology

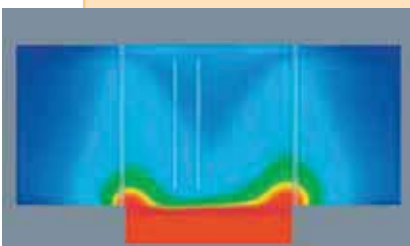
Three suction slots create a perfectly balanced airflow that ensures excellent powder containment while maintaining a quiet central application area.



Airflow designed for optimal conditions

EquiFlow Technology

ensures a homogenous airflow in the central automatic coating area and optimal suction on the pre- and postcoating sections.



A modern powder coating system needs to achieve many contrasting goals:

- a quiet and protected environment for the electrostatic powder application process;
- strong airflows to contain powder and maintain safe powder concentration mix;
- avoid powder accumulations and allow the quickest color changes with no contamination.

The new MagicCompact thanks to the patented EquiFlow technology easily meets all of these goals. The combination of the new booth design with the best electrostatic guns technology on the market and the flexible and versatile OptiCenter will exceed the most demanding expectations in terms of coating quality and quick color change.

Space saving layout, ideal for new installations and upgrades

Short installation time

Most of the systems components are delivered already pre-assembled from the factory, so that the system can be installed very quickly and without trouble. It can be easily integrated into existing installations with only a short downtime for assembly and setup.

Robust, low maintenance costs

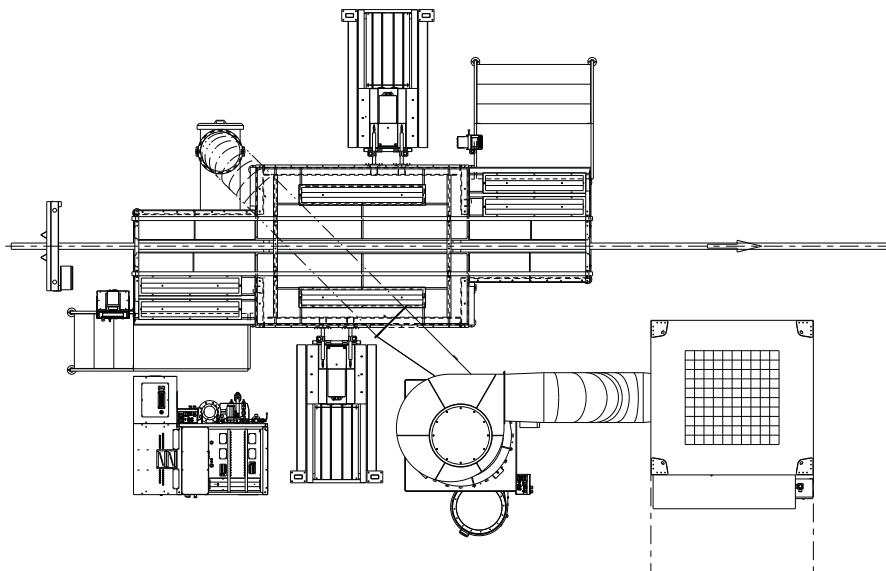
The very solid booth construction with no moving parts will ensure an expanded lifespan with almost no maintenance cost. Even if this is usually not necessary for normal cleaning operation, the booth floor is easily accessible for maintenance and control.

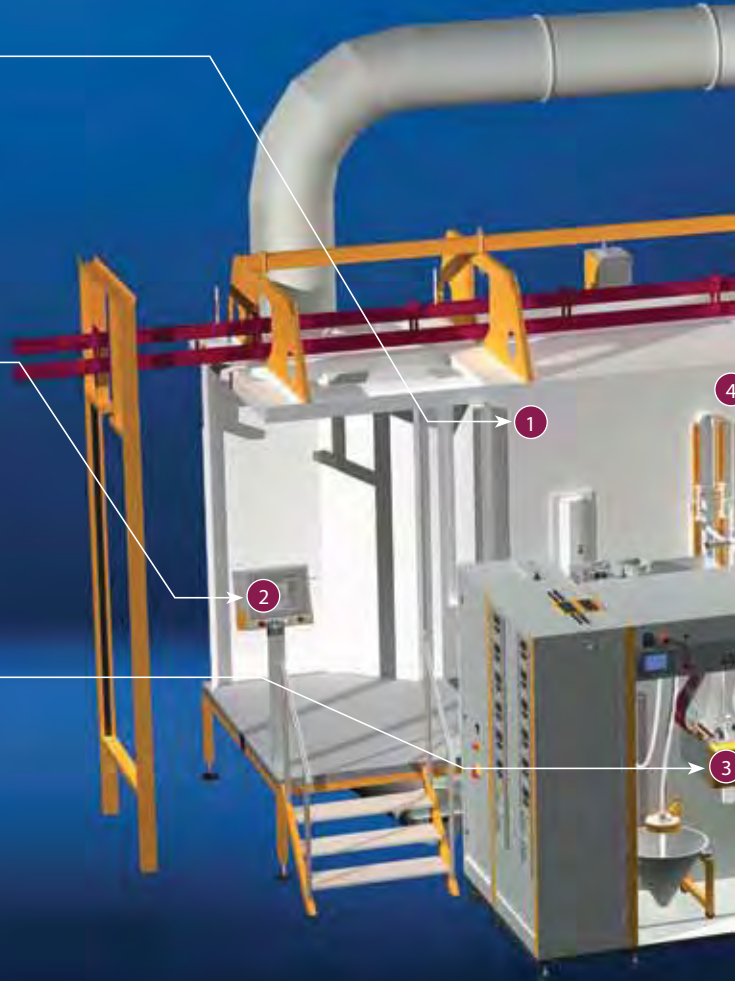
Efficient and user friendly layout

All the systems components are placed in the best configuration, based on our extensive worldwide experience. This means that during normal operation, during the color change process and for maintenance the operator can easily and quickly access all the key elements of the system.



Space saving design for an ergonomic workplace





① A sandwich of another kind!

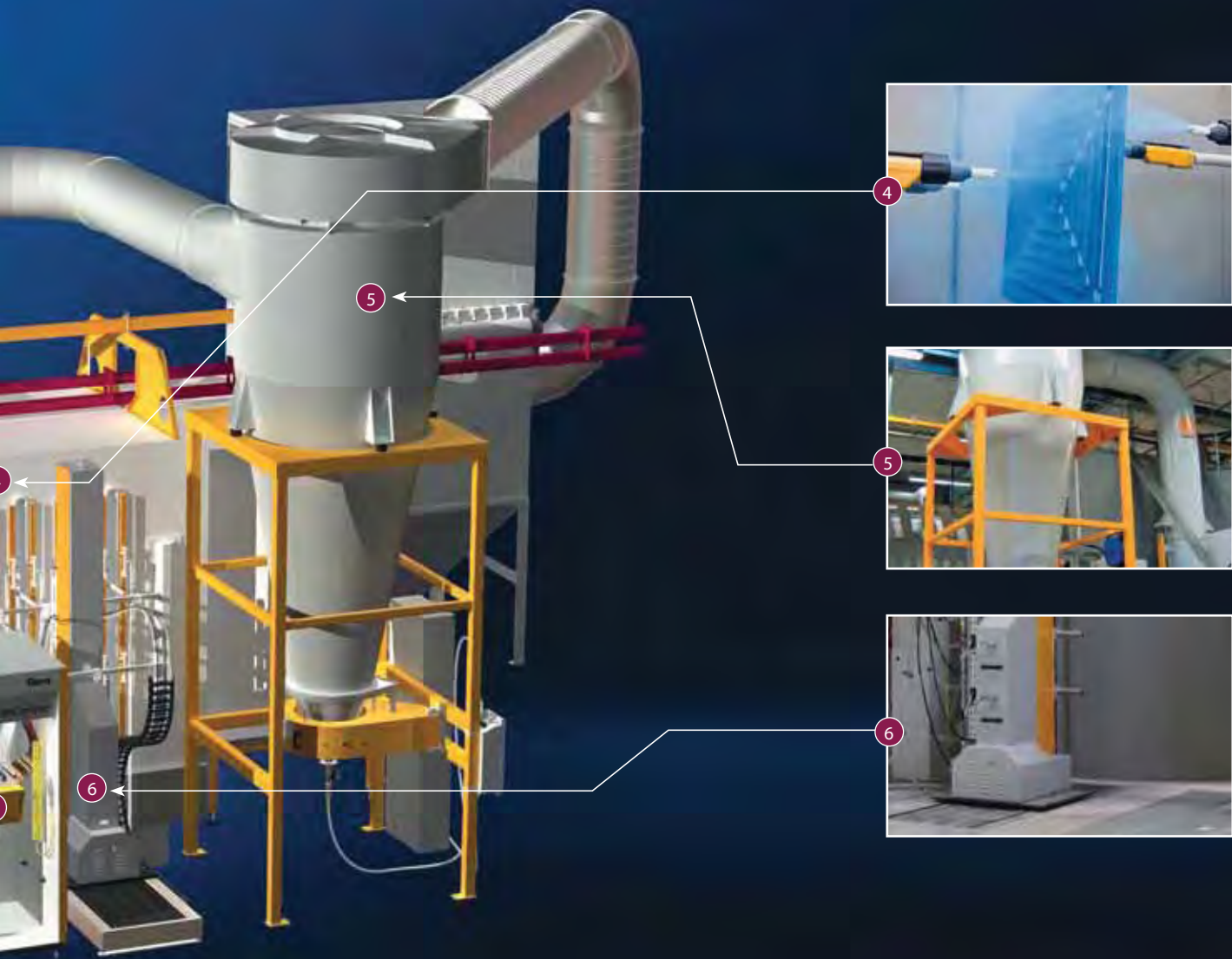
② Here you control the coating!

③ All the powder you want, where and when you want it!

MagicCompact EquiFlow features a sandwich-wall booth cabin construction. That's how powder accumulation is minimized on the booth walls. The booth floor is equipped with an automatic cleaning system to prevent powder accumulation.

Do you want to save powder? Do you insist on high user comfort combined with the highest coating quality? The versatile system control of the Magic Control series combines leading edge control technology with an intuitive user interface giving you the possibilities to access and control all parameters of the coating process.

The MagicCompact EquiFlow powder circuit aims for ease-of-use, continuous and consistent powder feed and minimal wear of parts. The Opticenter, injectors, powder pumps and recovery system are all perfectly aligned with one another and guarantee perfect working conditions. The fresh powder feed and sieving solutions are designed to meet exactly your quality requirements and expectations.



4 The heart of the powder coating!

5 For a good atmosphere!

6 Coating in every direction!

With high transfer efficiency, uniform powder application and optimal penetration into any geometry, the OptiFlex Series powder guns constitute the heart of the powder coating process. The color-change-friendly construction, which utilizes very few components that are subject to wear is an additional plus. The excellent ergonomics and the lightweight design of the OptiFlex manual guns, guarantees fatigue-free coating.

Our cyclones excel with their high separation efficiency. This ensures loss of expensive powder in the recovery circuit is minimized. The high aspiration performances and filtration efficiency of our final filters are the key to maintain clean and healthy ambient conditions.

A uniform distribution and powder film built is the key to achieve high quality results at the lowest powder consumption rate. Gema's reciprocators and positioners cover all movements, no matter what configuration you need.



OptiCenter: quick cleaning and superb coating results

Efficient powder management

The core piece of this new powder center is the OptiSpeeder II. This unique container concept completely prevents powder loss through fluidization. The control of the completely closed powder loop is fully automatic and precise. This enables extremely low powder consumption and leads to excellent coating results.



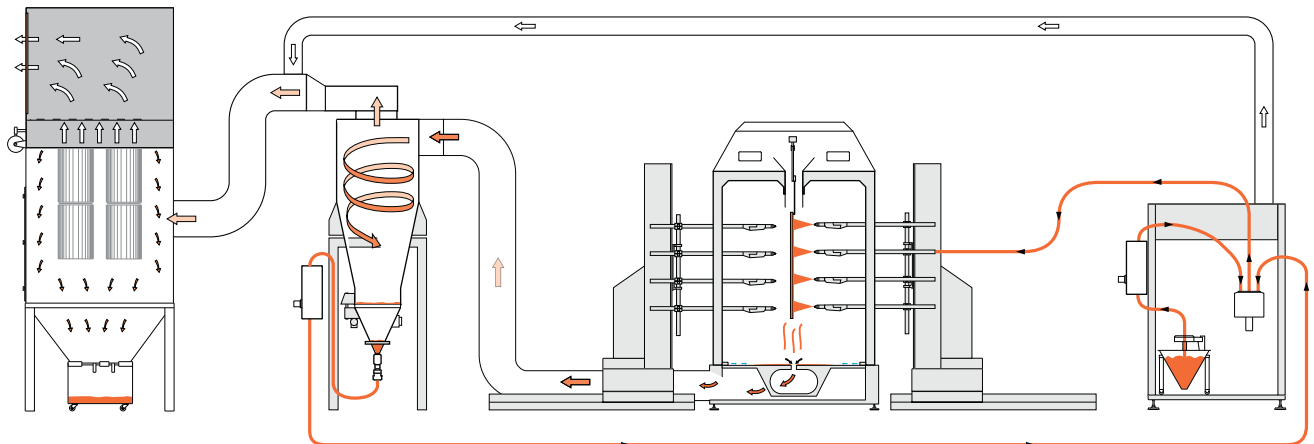
Better coating quality

The OptiSpeeder II is equipped with an automatic fresh powder supply and a powder level control system which ensures a constant powder quantity in the container. The suction tubes are much shorter than in the conventional powder center. These features translate into an even smoother powder flow and better coating results.

Automated color change

The overall design of the OptiCenter allows extremely quick color change. No separate tools are required, and all functions are integrated into the system.

Closed and efficient powder circuit



OptiFlex: the core of the electrostatic coating process

Designed for quick color changes

The OptiGun automatic powder gun is compact and easy to maintain. During color changes, the gun is quickly cleaned and ready to be used again. The nozzles are thoroughly cleaned, can be quickly removed and contain a minimum of parts that are subject to wear.

On-gun remote control

You can keep your eyes on the work piece, not on the control unit! With the remote control on the back of the gun, you can select the right program, even if the control module is out of your reach.

All parameters at one glance

With the control module OptiStar and MagicControl you have precise control of all coating parameters. Clear symbols, simple programming and a perfect reproducibility of your results contribute to measurably increase your coating quality.



The most advanced powder application technology

The OptiFlex Series powder guns and controls are a perfect combination of coating efficiency and user-friendliness.

- Perfect transfer efficiency with every powder due to the 100 kV high performance cascade
- Continual uniform powder delivery and charging for a uniform distribution and lay down of powder
- Patented Digital Valve Control (DVC) for accurate powder output control
- Control unit display ensures easy access to pre-set and customized coating programs
- Reduced maintenance costs due to the wear resistant design

SuperCorona®

The optional SuperCorona collects and neutralizes the free ions that would disturb the powder deposition on the object. This improves the surface quality.



Gema

Your global partner for high quality powder coating

Benefit from our knowledge based on more than 40 years of electrostatic powder coating experience.

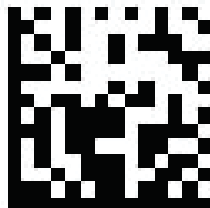
From simple manual coating units to fully automated powder coating systems, we offer the best possible solution to satisfy all of our customers in different countries and in different market segments, customers who all have their own individual needs and requirements. Our worldwide network guarantees professional service anywhere, anytime!

We make our customer's products more durable and attractive. Our finishing experts create the technologies, processes and materials that regularly set the standard for the industry.



Gema

The Global Leader in Powder Coating Technology



gemapowdercoating.com

Phone: 800-628-0601

Gema reserves the right to make technical modifications without prior notice. Illustrations in this leaflet may contain optional equipment and do not necessarily show the standard configuration. OptiCenter, MagicCenter, OptiSpeeder, MagicCompact, MagicCylinder, OptiFlex, OptiStar, OptiGun, OptiSelect, MagicControl, OptiControl and OptiFlow are trademarks of Gema.



Member of The Powder Coating Institute

