



Air Cap and Fluid Tip Selection Guide



TE10 Air Cap
Model #PRO-103-TE10

High Efficiency

Used on Gun Type:
TEKNA ProLite Gravity & Pressure Hand Guns, AG361 and AG362 Automatic guns



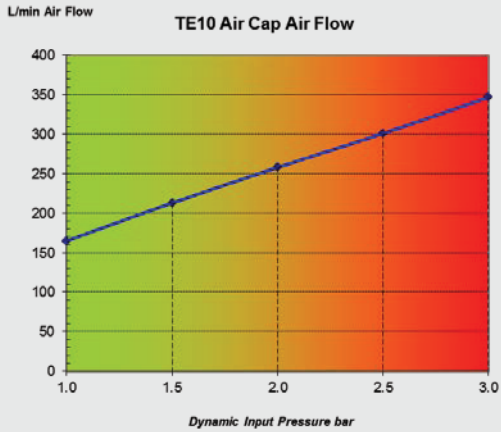
Used over Fluid Tips:	TEKNA ProLite Gravity Fluid Needle	TEKNA Pro Lite Pressure Fluid Needle
PRO-205-10*	Not Available	PRO-320-085-10
PRO-205-12*	Not Available	PRO-320-12-14
PRO-205-14*	Not Available	PRO-320-12-14
PRO-200-12	PRO-301	Not Available
PRO-200-13	PRO-301	Not Available
PRO-200-14	PRO-301	Not Available

Typical Applications:

Wood, General Industrial, Metal, Plastic, Aerospace, Leather, Military, Decorative, Construction, Light Marine

Air Consumption Graph

(measured using TEKNA ProLite gun with 1.4mm fluid Tip)



Spray Pattern



Pattern Shape:
Long Ellipse

Design Target Distance:
200mm (8")

Approximate Fan Size:
300mm long x 70mm wide @
200cc/min 25sec Din 4

Typical Fluid Flow Specification: Small to Medium scale application Air Cap. 150 – 200 ml/min

Viscosity Range Sprayed: 15 to 30 sec Din 4

Fluid Supply: Suction, Gravity & Pressure Feed

Original design specification: Solventbased & Waterbased coatings. Long Elliptical pattern, Small to medium production 2bar dynamic inlet Pressure

Materials of Construction: Electroless Nickel Plated Brass Air Cap and Retaining Ring

Part Number: PRO-103-TE10-K (Cap & Retaining Ring).

Notes: *Internal profile originally designed for Pressure Feed Applications

TE20 Air Cap
Model #PRO-103-TE20

High Efficiency

Used on Gun Type:
TEKNA ProLite Suction, Gravity & Pressure Hand Guns,



Used over Fluid Tips:

PRO-205-10*
PRO-205-12*
PRO-205-14*

TEKNA ProLite Gravity Fluid Needle

Not Available
Not Available
Not Available

TEKNA ProLite Pressure Fluid Needle

PRO-320-085-10
PRO-320-12-14
PRO-320-12-14

PRO-200-12
PRO-200-13
PRO-200-14

PRO-301
PRO-301
PRO-301

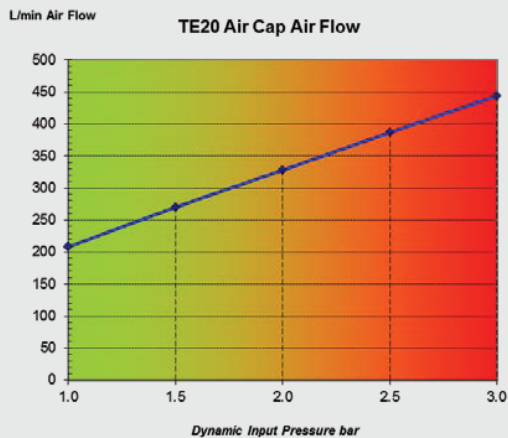
Not Available
Not Available
Not Available

Typical Applications:

Wood, General Industrial, Metal, Plastic, Aerospace, Leather, Military, Decorative, Construction, Light Marine

Air Consumption Graph

(measured using TEKNA ProLite gun with 1.3mm fluidTip)



Spray Pattern



Pattern Shape:
Long Ellipse

Design Target Distance:
200mm (8")

Approximate Fan Size:
290mm long x 60mm wide @ 200 ml/min 25 sec Din 4

Typical Fluid Flow Specification: Small to Medium scale application Air Cap. 150 – 200 ml/min

Viscosity Range Sprayed: 15 to 35 sec Din 4

Fluid Supply: Pressure Feed

Original design specification: Solventbased & Waterbased coatings. Small to medium production. 2 to 4 bar dynamic inlet Pressure

Materials of Construction: Electroless Nickel Plated Brass Air Cap and Retaining Ring

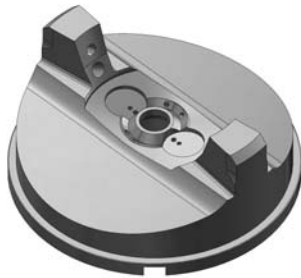
Part Number: PRO-103-TE40-K (Cap & Retaining Ring).

Notes: *Internal profile originally designed for Pressure Feed Applications

TE40 Air Cap
Model #PRO-103-TE40

High Efficiency

Used on Gun Type:
TEKNA ProLite Pressure Hand Guns



Used over Fluid Tips:

PRO-205-10*
PRO-205-12*
PRO-205-14*

TEKNA ProLite Pressure Fluid Needle

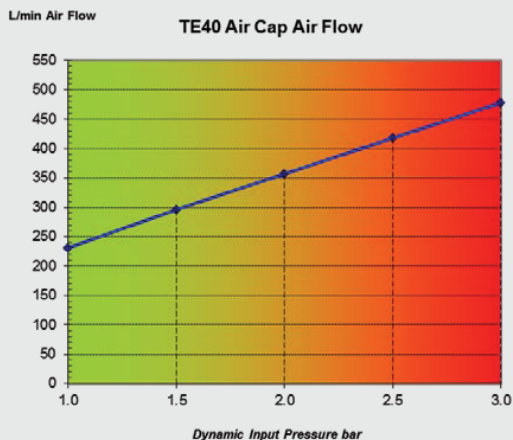
PRO-320-085-10
PRO-320-12-14
PRO-320-12-14

Typical Applications:

Wood, General Industrial, Metal, Ceramic, Vitreous Enamel, Lubricants, Adhesive, Plastic, Aerospace, Military, Decorative, Construction, Light Marine, Release Agent

Air Consumption Graph

(Measured using TEKNA ProLite with 1.4mm Fluid Tip)



Spray Pattern



Pattern Shape:

Straight sides/tapered ends

Design Target Distance:

250mm (10")

Approximate Fan Size:

380mm long x 80mm wide @ 320 ml/min 20 sec Din 4

Typical Fluid Flow Specification:

Small to Medium scale application Air Cap. 250 – 400 ml/min

Viscosity Range Sprayed:

15 to 35 sec Din 4

Fluid Supply:

Pressure Feed

Original design specification:

Solventbased & Waterbased coatings. Small to medium production. 2 to 4 bar dynamic inlet Pressure

Materials of Construction:

Electroless Nickel Plated Brass Air Cap and Retaining Ring

Part Number:

PRO-103-TE40-K (Cap & Retaining Ring).

Notes:

*Internal profile originally designed for Pressure Feed Applications

HV30 Air Cap
Model #PRO-103-HV30

HVLP **Used on Gun Type:**
TEKNA ProLite Suction, Gravity & Pressure Hand Guns



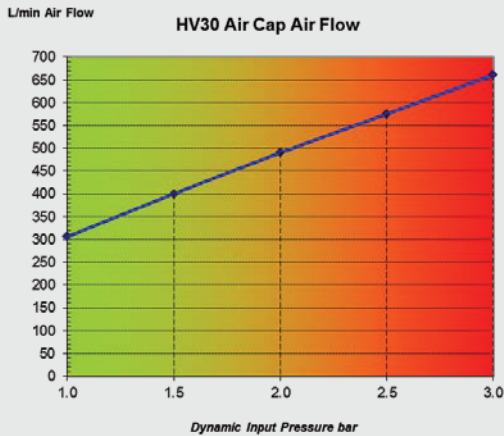
Used over Fluid Tips:	TEKNA ProLite Gravity Fluid Needle	TEKNA ProLite Pressure Fluid Needle
PRO-205-10*	Not Available	PRO-320-085-10
PRO-205-12*	Not Available	PRO-320-12-14
PRO-205-14*	Not Available	PRO-320-12-14
PRO-200-12	PRO-301	Not Available
PRO-200-13	PRO-301	Not Available
PRO-200-14	PRO-301	Not Available

Typical Applications:

Wood, General Industrial, Metal, Plastic, Aerospace, Leather, Military, Decorative, Construction, Light Marine

Air Consumption Graph

(Measured using TEKNA ProLite with 1.3mm FluidTip)



Spray Pattern



Pattern Shape:
Long Ellipse

Design Target Distance:
200mm (8")

Approximate Fan Size:
315mm long x 70mm wide @ 200

Typical Fluid Flow Specification:

Small to Medium scale application Air Cap.160 – 200 ml/min

Viscosity Range Sprayed:

15 to 25 sec Din 4

Fluid Supply:

Suction, Gravity & Pressure Feed

Original design specification:

Solventbased & Waterbased coatings. Long Elliptical pattern, Small to medium production. 2bar dynamic inlet Pressure

Materials of Construction:

Electroless Nickel Plated Brass Air Cap and Aluminium Retaining Ring

Part Number:

PRO-103-HV30-K (Cap & Retaining Ring).

Notes:

*Internal profile originally designed for Pressure Feed Applications

HV40 Air Cap
Model #PRO-103-HV40

HVLP

Used on Gun Type:
TEKNA ProLite Pressure Hand Guns



Used over Fluid Tips:

- PRO-205-10*
- PRO-205-12*
- PRO-205-14*

TEKNA ProLite Pressure Fluid Needle

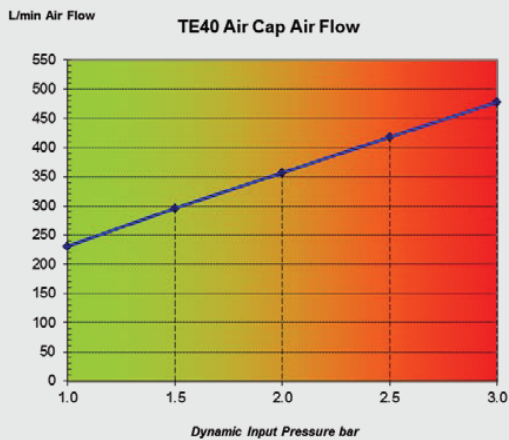
- PRO-320-085-10
- PRO-320-12-14
- PRO-320-12-14

Typical Applications:

Wood, General Industrial, Metal, Ceramic, Vitreous Enamel, Lubricants, Adhesive, Plastic, Aerospace, Military, Decorative, Construction, Light Marine, Release Agent

Air Consumption Graph

(Measured using TEKNA ProLite with 1.4mm Fluid Tip)



Spray Pattern



Pattern Shape:

Straight sides/tapered ends

Design Target Distance:

250mm (10")

Approximate Fan Size:

380mm long x 80mm wide @ 320 ml/min 20 sec Din 4

Typical Fluid Flow Specification:

Small to Medium scale application Air Cap. 150 – 200 ml/min

Viscosity Range Sprayed:

15 to 35 sec Din 4

Fluid Supply:

Pressure Feed

Original design specification:

Solventbased & Waterbased coatings. Small to medium production. 2 to 4 bar dynamic inlet Pressure

Materials of Construction:

Electroless Nickel Plated Brass Air Cap and Retaining Ring

Part Number:

PRO-103-HV40-K (Cap & Retaining Ring).

Notes:

*Internal profile originally designed for Pressure Feed Applications