

PK3D

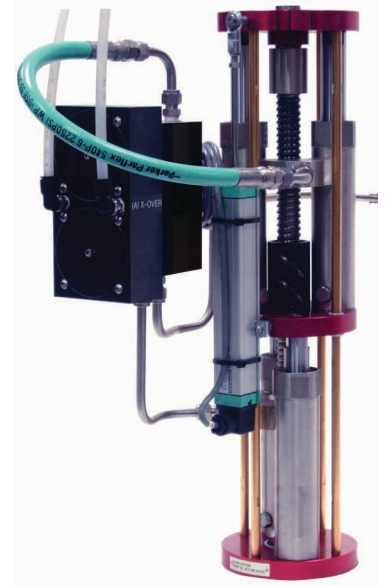
3 Component Dispenser
Variable Mix Ratio

Fluidic
Systems 



Features and Benefits

- Linear Displacement Pump (LDP) - Double acting positive displacement rod pumps (Patented)
 - Continuous metered flow (virtually pulse-free) = Shorter Cycle Time
 - Three Component Variable Mix Ratio – 1:1:1 to 100:100:1 (+/-1%) = Long Term Utility
 - Dynamic flow rate control 1cc/min. to >gal/min. = Precision Flow Control
 - Viscosity range 1cps to heavy non-flow abrasive compounds = Universal Pump Utility
 - Pressure range 1 psi to >3,000psi = Universal Pump Utility
 - No Pistons, Check Valves, Flow Meters = No Slip Factor, No Calibration, Reliability
 - Low shear = Density Integrity of Syntactic Compounds
- Cross-Over Valve (XV2) – Automated 4-way directional flow control valve (Patented)
 - Replaces check valves for load/dispense functions during LPD reciprocations = Reliability
 - Allows pressure balancing inlet/outlet pressures = Continuous Pulse-Free Metered Flow
- PLC Servo Motor Pump Drives Control
 - Enables Precision Mix Ratio, Flow Control and Factory Automated

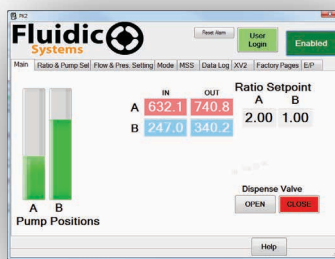


Applications

Adhesive/Sealants
Potting/Encapsulants
Paints/Coatings

Markets

General Industrial
Electrical/Electronic
Automotive
Military/Aerospace Industries.



Control Functions

- Windows HMI Touch Screen
- No Mechanical Control Adjustments, Statistical Process Reporting (SPR), Control Integrations, Diagnostic Troubleshooting, PM Monitoring, Remote Control Access

PK2D Animation



Standard Features

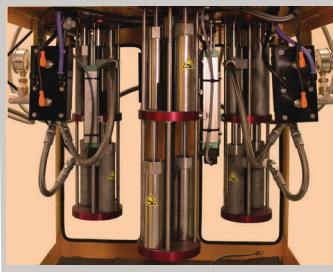
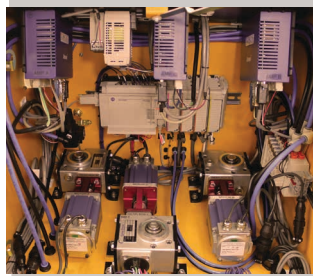
- Linear Displacement Pumps (LDP)
- Cross-Over Valves (XV2)
- PLC Controlled Servo Drives
- Touch Screen Control Interface (6" Mono Chrome)
- Dispense Valve Gun
- Cabinet Casters
- Dispense Modes: Manual / Programmable



Optional Features

- Windows HMI 10" Color Touch Screen
- Customized HMI Control Screens. Statistical Process Reporting (SPR), Remote Access, Control Integrations, Diagnostic Troubleshooting, PM Monitoring
- Material Supply Sensors (MSS) – Inlet Material Sensors
- Liquid Level Sensors - Pressure Pots, Pails, Drums, Totes
- Auto Pressure Balancing – Inlet Supply / Outlet Dispense Pressures
- Static Mounted Dispense Valve - Foot Switch or Robotic Activation
- Robotic Integration – Start/Stop, Flow Control, Purge/Flush Control
- Type X Air Purge – Class I, Div1, Group D
- Duplex LDP Metering

- Material Supply – Pressure Pots / Transfer Pumps
- Signal Tower – LED Light/Audible Alarm
- Mobile Self Contained Platforms
- Overhead Jib Crane
- TFE SS Braided Hose Assemblies
- Thermostatic Controlled Heating Solutions



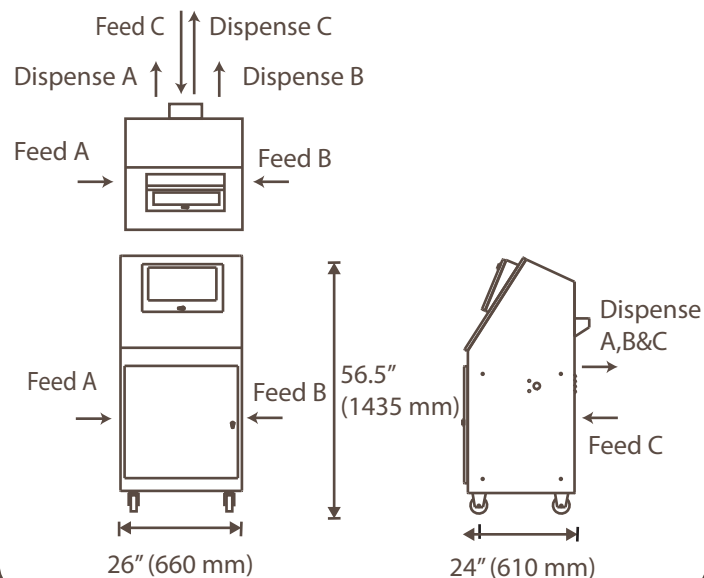
Technical Specifications

Mix ratio range A:B	1:1:1 to 100:100:1*
Mix ratio tolerance range	±1%*
Minimum shot size.....	0.5 g/0.018 oz)*
Minimum flow rate	5 cc/min (0.17 fl.oz/min)*
Maximum flow rate	10,000 cc/min (2.7 gal/min)*
Maximum fluid working pressure	>3,000 psi*
Air supply pressure range.....	5-8.5 kg/cm ² (80-120 psi) @ 20 CFM
Operating temperature range	4 to 60 C (40 to 140 F)
Electrical requirements:	120 VAC (60 Hz) 1Φ, 25 amps
.....	220 VAC (60 Hz) 1Φ, 25 amps
Wetted materials .303, 316 SS, TFE UHMWPE, anodized aluminum	
Viscosity range of fluids	1 cps to Non-flow abrasive comp.
Fluid Handled	One or two components
.....(epoxies, urethanes, silicones, acrylics, polyesters)	

*Application dependent

Dimension Drawings for PK3D.

All dimensions are in inches (millimeters).



Fluidic
Systems

2655 S. Orange Avenue, Santa Ana, CA 92707-3738
+1(714)556-6747
www.fluidicsystems.com
sales@fluidicsystems.com