

DIRECT DRIVE PUMP (DDP)

DELIVERS PRECISE FLUID REGULATION

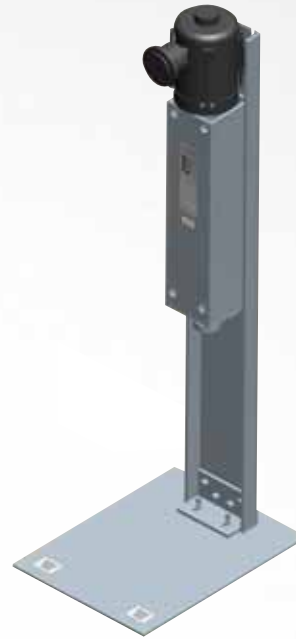
Superior Performance

Uniform Metered Flow

Rugged, Durable Design

Display Motor

Isolated Gear Pump



The Ransburg DDP, Direct Drive Pump, provides an extremely accurate, repeatable means of supplying coating material to the applicator. Compatible with a wide variety of solvent and waterborne coating materials, the DDP offers a broad range of options to meet your system's operating needs.

The DDP's AC-motor drives the system's gear pump via an isolated shaft. The positive displacement of the gear pump delivers a given amount of material based on the speed (rpm) of the motor. Digital controls provide variance in speed for a precise, consistent finish. The gear pump can be gravity or suction fed, if wetted/primed, and the output has the ability to connect either directly to the applicator or routed through a three-way valve, if continuous circulation is required.

Built with an explosion proof motor, the DDP system can be conveniently located anywhere within the spray area. The operator regulates the flow rate as well as the start/stop function either locally or at a remote station. These user-friendly controls deliver convenience as well as an accurate, even finish.

DIRECT DRIVE PUMP (DDP)

SPECIFICATIONS:

Power Input:

Controller – 230 VAC (+/-20%),
50/60 Hertz. Requires 20 amp
fuse disconnect

Motor Speed:

57 rpm (min), 1725 rpm (max.)

Pump Speed:

30 – 900 rpm (dependent on
pump type)

Fluid Delivery:

20 – 900 cc/min (dependent on
pump)

Motor:

UL listed, CSA certified, explosion
proof Class I groups C&D, Class 2
groups F&G, constant torque
1000:1 rated 1/2 hp 1800 rpm max

Height:

63" / 159.9 cm

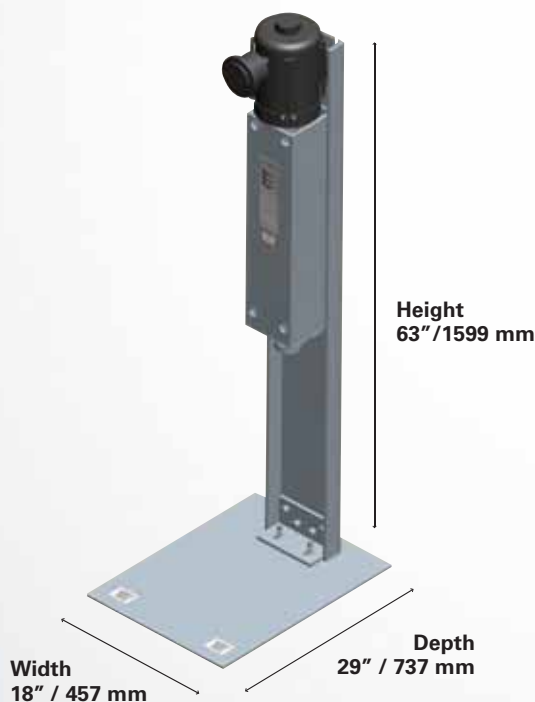
Width:

18" / 457 mm

Depth:

29" / 737 mm

- **Superior Performance:** achieves stable repeatable flows under varying conditions including temperature, viscosity and pressure
- **Uniform Metered Flow:** virtually pulseless flow, without valves or flexible elements that add complexity and increase cost
- **Minimal Maintenance:** fewer moving parts to minimize wear and tear
- **Rugged, Durable Design:** through hardened, abrasion resistant materials provide excellent self-lubrication for corrosion resistance
- **Explosion Proof Start/Stop And Speed Control Station:** simple, easy to use controls provide a precise, consistent finish
- **Optional Peristaltic Pump:** ideal for corrosive or abrasive materials
- **Display Motor:** can be configured/sealed to show fluid flow rate based on gear pump displacement
- **Isolated Gear Pump:** provides flexibility for solvent or waterbase materials
- **Versatile Pumping:** optional solvent and waterborne pumps available



Ransburg



320 Phillips Ave.
Toledo, Ohio 43612-1493 USA
Phone: 800-909-6886
Fax: 419-470-2233
Website www.ransburg.com
Email: marketing@ransburg.com