

CCV

COLOR CHANGE VALVE

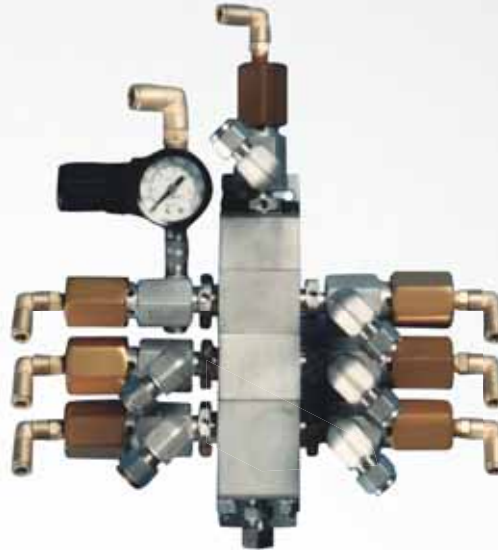
Proven Performance

Compact Design

***Durable Stainless
Steel Construction***

Modular Manifold Design

Available with Metal Finish



Ransburg's Modular Color Change System incorporates a practical and flexible valving assembly suitable for a variety of applications ranging from small industrial shops to major automotive lines. The valving assembly consists of pneumatically-operated fluid valves and manifold blocks designed for all types of coatings.

All wetted parts in the valve and manifold are engineered for compatibility with today's coatings including waterborne, high solids, and catalyzed materials.

The modular design allows for the changing needs of fluid supply systems. Valving assemblies consist of modular blocks which can easily be expanded. In addition, these same valves are used for rotary atomizer triggering and fluid dump functions, thus simplifying maintenance and part stocking. A wide variety of manifold blocks, adapters and fittings provide versatility for a variety of applications.

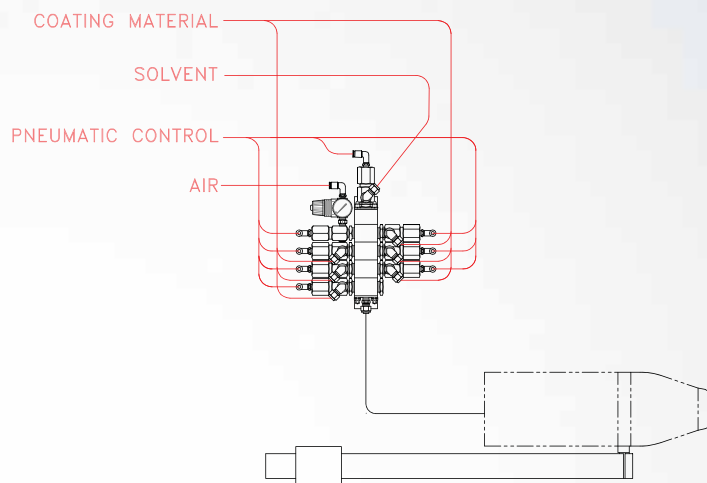
Assembly of the valve to the manifold or adapter fitting is accomplished easily and quickly. The valve threads directly into the manifold by a unique captive hex fitting. The fitting rotates, eliminating the need to rotate the valve body or hose connections; this facilitates fast installation and ease of accessibility for maintenance.

The manifold block is the building element into which all valves are assembled. Manifold blocks can be stacked as a pre-assembled unit to hold an appropriate number of valves for multi-color installations.

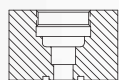
SPECIFICATIONS:

Nominal Dimensions	4" long x 1-1/8" hex (10.1 cm x 2.9 cm)
Air Requirements	70-100 psig (4.8 - 6.9 bar) operating pressure
Air Inlet	1/4" OD tubing
Fluid Pressure	300 psig (20.6 bar) (max.)
Fluid Inlet	1/4" NPT (F) x 2 ports (Fitting installed 3/8" OD tubing)
Fluid Outlet	1/4" NPT (F) x 1 port (Fitting installed 3/8" OD tubing)
Fluid Flow	3800 CC/min @47 PSI pressure drop (Paint viscosity @ 700 centipoise) <i>Varies accordingly to material pressure & viscosity.</i>
Valve Actuation Speed	On-Off Cycle: 55 cycles/min.
Colors	Up to and including 30 colors total

FLUID SUPPLY

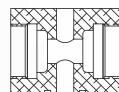


TOP BLOCK



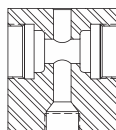
CCV-17-SS

CENTER BLOCK



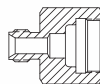
CCV-16-SS

BOTTOM BLOCK



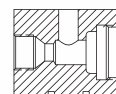
CCV-18-SS

ADAPTER



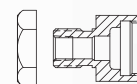
CCV-34-SS

DIVIDER BLOCK



CCV-38-SS

ADAPTER



KK-4372

CCV-17-SS

This single valve block is designed to dispense solvent and/or air from the top of a color valve manifold. This "straight shot" design permits rapid and effective purging and cleaning of the manifold passages.

CCV-16-SS

Basic manifold block designed to accept two CCV-403-SS valves or one valve plus a KK-4370 plug kit.

CCV-18-SS

Designed for use at the bottom of the manifold stack, this two-valve block has a 1/4" NPT (F) outlet in a straight-through configuration. This block can also be used with a CCV-36-SS plate to create a simple two-valve manifold.

CCV-34-SS

A single valve outlet adapter designed for direct connection to a 1/4" NPSM (F) swivel fitting.

CCV-38-SS

This block provides a means of dividing a manifold into two or more independent sections or, it can be used as the main outlet in place of the CCV-18-SS.

KK-4372

Single valve outlet and mounting adapter with jam nut. Provides a 1/8" NPT (F) outlet, designed for mounting in a 41/64" diameter hole in a bulkhead or bracket up to 1/4" thick.

KK-4370

Plug and gasket kit for blocking off unused manifold valve ports. Fits CCV-16, 17, 18, 38-SS.

KK-4385

Manifold assembly kits contains all the required seals and hardware, including two CCV-37 brackets and four support rods needed to make up a manifold assembly containing up to 25 valves.

Ransburg



320 Phillips Ave.
Toledo, Ohio 43612-1493 USA
Phone: 800-909-6886
Fax: 419-470-2233
Website www.ransburg.com
Email: marketing@ransburg.com