

SATAjet® 5000 B



German Engineering

Spray Guns | Cup Systems | Breathing Protection | Air Filtration | Accessories



Design by
**PORSCHE DESIGN
STUDIO**

As versatile as you

Supreme flexibility – The SATAjet® 5000 B

The premium spray gun SATAjet 5000 B sets quality standards. Being extremely versatile in terms of application distance and inlet pressure, this established, high performance spray gun has a well proven track record. Painters have the possibility to set pressure and distance as required by the paint to be applied, the climatic conditions and the work method – to achieve perfect finishes.

Ergonomics at its finest

The design of **SATAjet 5000 B** has been created by the experts at the Porsche Design Studio who have translated pure functionality into aesthetic form together with the specialists at SATA. Due to the optimized shape of the gun handle, the spray gun fits perfectly in the palm of the hand. In addition, the gun handle of the digital version is identical in size to the standard model which makes it the perfect spray gun for all painters, regardless of the size of their hands.

Easy to operate

Our quest for excellent ergonomics however has not only influenced the development of the gun handle, but equally the design of spray fan control, material flow control as well as the air micrometer. Robust but still low in weight, this spray gun offers a perfect combination of ease of application and durability.

SATAjet 5000 B. The ultimate spray equipment.

PRODUCT BENEFITS

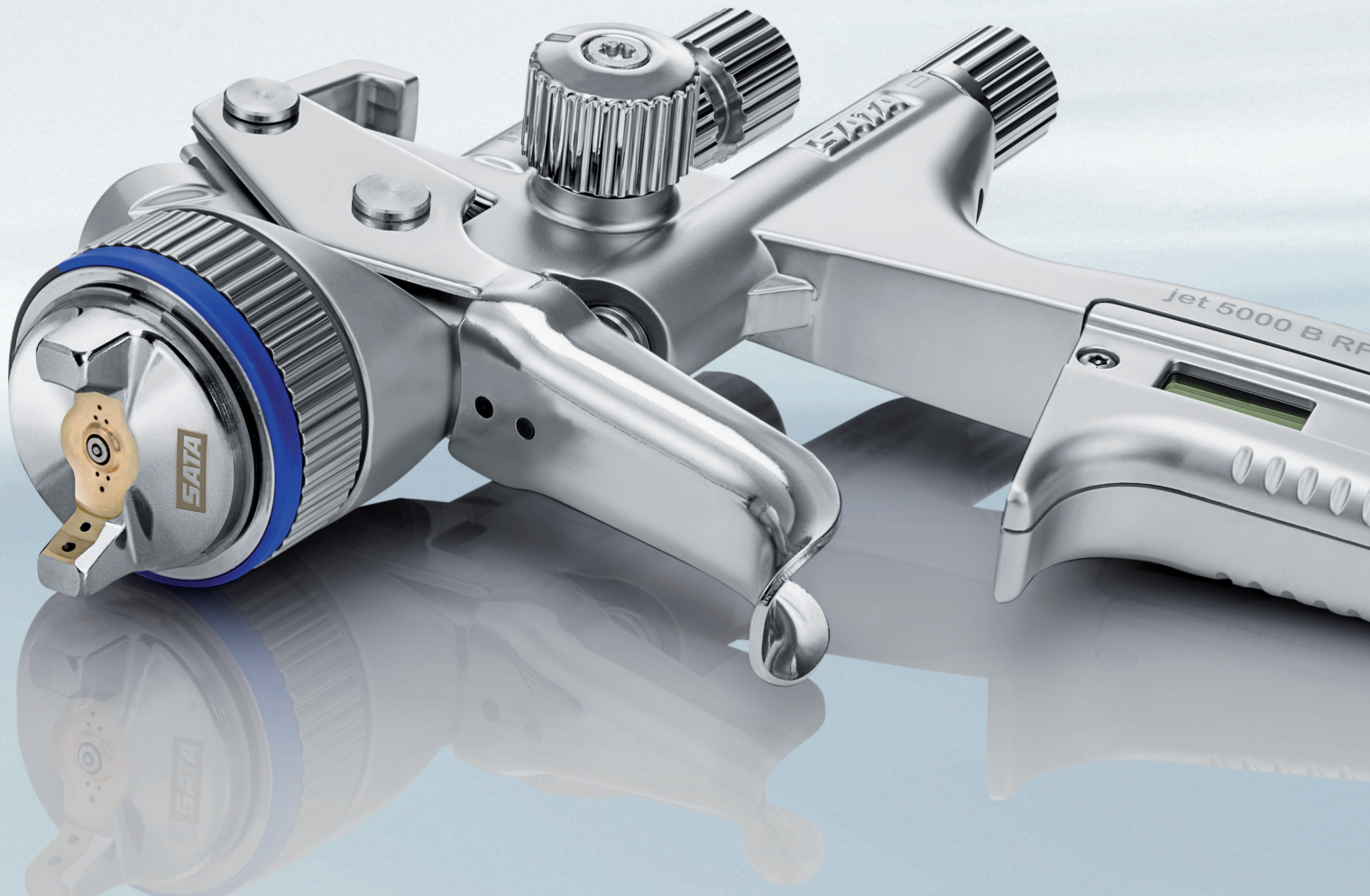
- Optimized nozzle concept for highest possible versatility concerning inlet pressure and spray distance
- Ergonomically shaped gun handle
- The pearlodized™ surface is a technical enhancement of the "pearlchrome" surface to further improve corrosion resistance as well as ease of cleaning and maintenance
- Easy to adjust control elements
- Safely positioned trigger sleeve – for easy, safe and quick insertion of the paint needle
- Identical compact-size gun handle for non-digital and digital spray guns
- Optimized round / flat fan control with half-turn only



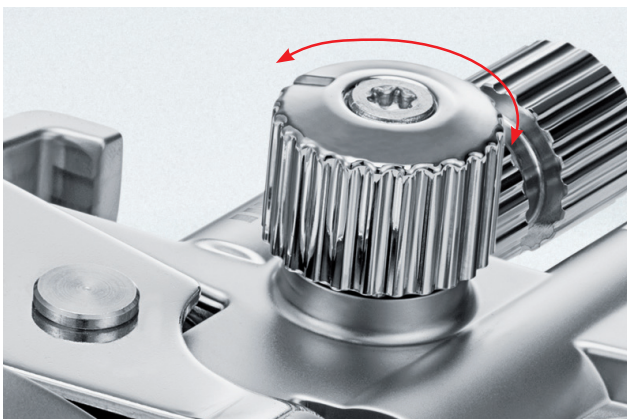
Enhanced ergonomic design – the SATAjet 5000 B with optimized gun handle contours suiting every palm



A uniform and flexibly adjustable spray fan according to the specific requirements – the SATAjet 5000 B for perfect finishes



Optimized spray fan control: Quick and precise adjustment of the spray fan with a half turn only



Pressure under control – the DIGITAL® option: Integrated pressure gauge – to ensure perfect reproducibility





No adapter required – SATA RPS multipurpose cups fit directly on the SATAjet 5000 B – for reduced weight and cleaning effort

<p>SATAjet 5000 B RP Inlet pressure Field of application: 7 psi - 29 psi Compliant: max. 29 psi</p>
<p>Air consumption at 29 psi: 10.2 cfm</p>
<p>Spray distance Field of application: 3.9" - 8.3" Recommended: 6.7" - 8.3"</p>
<p>SATAjet 5000 B HVLP Inlet pressure Field of application: 7 psi - 29 psi HVLP: max. 29 psi</p>
<p>Air consumption at 29 psi: 15.2 cfm</p>
<p>Spray distance Field of application: 3.9" - 8.3" Recommended: 3.9" - 5.9"</p>



SATA® adam 2™

To upgrade non-digital spray guns to "DIGITAL" – the version for retrofitting the **SATAjet 5000 B Standard** without integrated digital pressure gauge. Ensures correct setting and display of the gun inlet pressure for highest reproducibility.



Part. No. 211557 chrome, complete, (fits SATA 5000 series only)

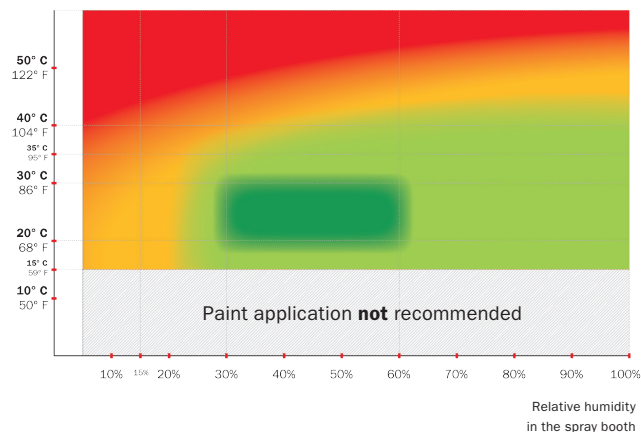
Part. No. 1031715 black complete, (fits SATA 5000 series only)

Part. No. 211565 each, (dock only, fits SATA 5000 series only)

Part. No. 211573 Pk of 2, (dock only, fits SATA 5000 series only)

Paint application, especially waterborne paints, in different climatic zones ¹⁾




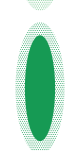
Spray booth temperature



Climatic conditions

- **Extreme**
 Additive ²⁾ and special nozzle set possibly required
Recommendation:
 NS: ↑ by 0.1 – 0.2 (SATAjet 5000 B)
- **Critical**
 Additive ²⁾ possibly required
Recommendation:
 R/F³⁾: ↓ ■■■■■
 IP³⁾: ↓ by 0.2 – 0.5 bar / 3 – 7 psi
 NS³⁾: ↑ by 0.1 – 0.2 (SATAjet 5000 B)
- **Uncritical**
 Additive ²⁾ possibly required
- **Optimal**

Required spray pattern depending on climatic conditions

- 
 Spray pattern with large wet core and reduced oval fan size for extreme climatic conditions
- 
 Spray pattern with wider large wet core for critical climatic conditions
- 
 Standard spray pattern (stretched wet core) for uncritical climatic conditions
- 
 Standard spray pattern (stretched wet core) for optimum climatic conditions

1) Measured inside the spray booth by means of a thermometer or hygrometer. Climatic conditions may vary in regard to temperature and air humidity during the day.
 2) Please observe the paint manufacturers' specifications concerning nozzle recommendations, spray pressure and application method as well as the use of additives depending on the existing climatic conditions. Some paint manufacturers recommend to continue working with the nozzle set indicated for optimum conditions (green area) using additives for special climatic conditions.
 3) R/ F Round/Flat control | IP=Inlet Pressure | NS=Nozzle Set

The SATAjet 5000 B, the epitome of perfection

Robust air cap made of chrome-plated brass with **QCTM** air cap thread for quick change with one turn only.



QCC™ – Quick Cup Connector. Bayonet cup connection. Ensures quick and clean cup change as well as easy cleaning.

Fluid tip and paint needle made of corrosion-resistant stainless steel.

Material passage (red)

Air passage (blue)

Fluid tip seal ensuring minimal cleaning effort and safe color change.

Low maintenance, self-tensioning air piston and paint needle packings.

Trigger with paint needle guard ensuring increased life-time of the paint needle packing.

Option: Digital pressure display for exact pressure adjustment, perfect color match and reproducibility.

CCS™ – Color Code System. For the convenient identification of your spray gun.



Gun suspension hook for convenient storage.

Control elements can be perfectly adjusted even wearing gloves; material flow control with good grip

Air micrometer for the adjustment of the atomization air. Highest precision with digital pressure gauge (optional).

Spray fan control allowing fine adjustment with a half turn only.

Ergonomically shaped gun handle.

Easy to clean, corrosion-resistant pearlodized™ surface.

Warranty: Talking quality is not enough – we guarantee it: for three years!

Two ways to achieve a perfect result: **HVLP** and **RP®**

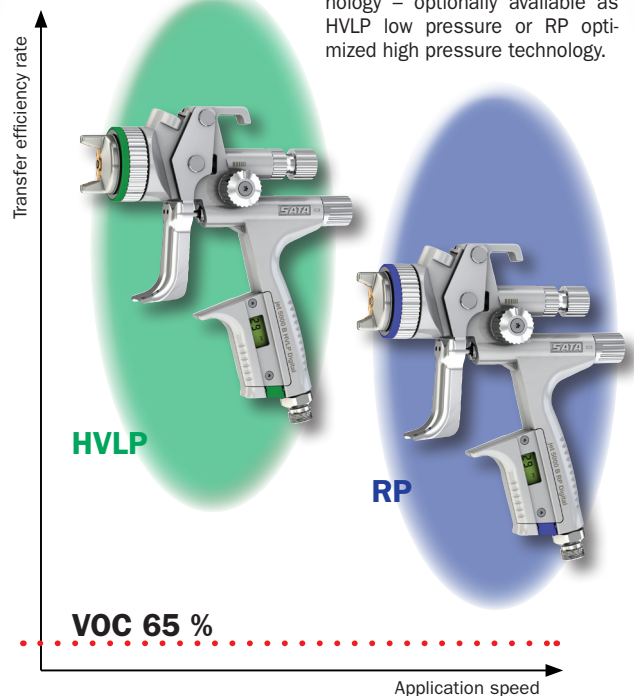
The "Super Saver" SATAjet 5000 B HVLP achieves particularly high transfer rates, due to its low pressure technology.

The "Super Speed" SATAjet B RP with its optimized high pressure technology for maximum application speed and minimum overspray.

Both versions are extremely versatile in application, meeting highest expectations concerning excellent finishes, while far exceeding 65% transfer efficiency rates in accordance with VOC legislation.



VOC-compliant atomization technology – optionally available as HVLP low pressure or RP optimized high pressure technology.



Superior application – SATAjet 5000 B

The SATAjet 5000 B, achieving brilliant finishes: Whether it be in car refinish, commercial transportation, coating furniture, marine yachts or high quality industrial components – regardless of the paint system being used.

Concerning the correct nozzle size or base coat, clearcoat or single stage materials, please use paint manufacturers recommendations, consult your SATA dealer or our website:

www.satausa.com/SATAjet5000B



Nozzle size	HVLP										
	1.0	-	1.2	WSB	1.3	1.4	1.5	1.7	1.9	2.2	
Standard Cpl. with 0.3 l, 0.6 l 0.9 l QCC multipurpose RPS cups	1.0	1.1	1.2	1.2 W	1.3	1.4	1.6	1.8	2.0	2.5	
		210732	-	210740	210757	210765	210799	210823	210831	210849	210856
	-	215640	209858	209866	209874	209882	209890	209908	209916	-	
DIGITAL Cpl. with 0.3 l, 0.6 l 0.9 l QCC multipurpose RPS cups	211094	-	211110	211128	211136	211151	211193	211201	211219	-	
	210138	210146	210153	210161	210179	210187	210195	210203	210211	-	
Nozzle set	210955	-	210963	210971	210989	211011	211045	211052	211060	211078	
	210245	210252	210260	210278	210286	210294	210302	210310	210328	210336	

RP version **approved** by SCAQMD and EPA, meets rule 40, part 63, HHHHHH. Visit www.satausa.com for approvals

Accessories:

SATA® adam 2™



To upgrade non-digital spray guns to "DIGITAL" – the version for retrofitting the **SATAjet 5000 B and SATAjet**



X 5500 series Standard, without integrated digital pressure gauge. Ensures correct setting and display of the gun inlet pressure for highest reproducibility.
 Part No. 211557 complete, (SATA 5000 series only)
 Part No. 1031715 black complete, (SATA 5000 series only)
 Part No. 211565 each, dock only, (SATA 5000 series only)
 Part No. 211573 pk of 2, dock only, (SATA 5000 series only)

SATA® cert™

Prevent rework before it occurs – with the regular checking of the spray pattern.
 Part No. 161596



SATA® RPS™



Replaces reusable plastic cups and fits on the SATA spray guns without adapter.

Reduces cleaning effort and helps save solvents. Available sizes: 0.3 l, 0.6 l and 0.9 l. Part No. upon request



SATA® care set™

The practical tool bag containing useful utensils for gun cleaning and maintenance. Items marked with a red surround are not included in the scope of delivery.
 Part No. 162628



Further useful accessories like air hoses, respirators, compressed air filters etc. are available from your SATA dealer.

Your SATA dealer



DanAm®

The exclusive independent distributor of SATA product in the US and Puerto Rico

One SATA Drive
 Spring Valley, MN 55975
 Phone: 800-533-8016
 Fax: 800-633-7282
 e-mail: satajet@satausa.com
www.satausa.com

Errors and technical alterations reserved - SATA, SATAjet and/or other SATA products referenced here in are either registered trademarks or trademarks of SATA GmbH & Co. KG in the U.S. and/or other countries. 29_SATAjet 5000 B 161003