



15C50

Airmix[®] Paint Pump

Productivity for all

Product highlights

- Good chemical compatibility with GT or MB-A cartridges
- Two-gun management available
- Suction rod or gravity hopper



BOND • PROTECT • BEAUTIFY

15C50

Airmix® Paint Pump

The 15C50 Airmix® pump is perfect for painting medium quantities of fluid products, water or solvent based. Up to 90 bars of fluid pressure to compensate pressure drops.



Adapted industrial markets



Industrial



Transportation



Wood



ACE*



Railways



Technical data table

Designation	Value	Unit
Maximum Air Pressure	6 (87)	bar (psi)
Recommended Air Pressure	2 - 5 (29 - 72.5)	bar (psi)
Pump displacement	50 (3.05)	cc/cycle (in ³ /cycle)
Fluid Output at 20 cycles / mn	1 (0.26)	l/min (gal/min)
Fluid Output at 60 cycles / mn	3 (0.79)	l/min (gal/min)
Free Flow Rate	3 (0.78)	l/min (gal/min)
Number of cycles per liter of products	20	
Height	585 (23)	mm (in)
Width/depth	320 (12.60)	mm (in)
Depth	170 (6.70)	mm (in)
Maximum Material Pressure	90 (1305)	bar (psi)
Pressure ratio	15/1	
Air Consumption	3.55 (2.09)	m ³ /h (cfm)
Weight	8 (17.6)	kg (lbs)
Maximum Temperature	60 (140)	°C (°F)
Power Source	Pneumatic	
Sound Level	74.90	dba
Certification	CE-UKCA II2G Ex h IIB T3 Gb X	
Motor Type	Differential	
Pump Type	Cup pump with balls	
Air Inlet Fitting	F3/8" BSP / F3/8" BSP	
Material Inlet Port	F 1/2 " BSP / M26x125	
Material Outlet Port	M1/2" JIC	

Marking

Product	Type
15C50	CE 0080  ER 2503  CE-UKCA II2G Ex h IIB T3 Gb X

*: "AgricultureConstruction and Earthmoving"



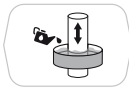
Technologies



2 Ball



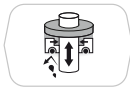
Cartridge



Cup Lub



GT sealing



MBA cartridge



Description

The 15C50 compact Airmix® paint pump is recommended to handle all types of materials ranging from medium to low viscosity. The 15C50 Airmix® is particularly suited for 1 or 2 Airmix® gun applications and heated spray systems. Create various Airmix® & electrostatic Airmix® configurations with our large choice of accessories to meet all customer requirements.

Performances

- Quiet and balanced air motor for constant delivery
- Ergonomic design
- Pulse-free for a superior finish
- Able to prime at very low air pressures (0.6 bar / 8.7 psi) for easy paint loading
- Designed to eliminate dead zones for quick color changes

Productivity

- Closed construction - zero injury risk
- Lubricant protected from external contamination
- Easy rotatable outlet fitting to fit every configuration
- No tie rods - intermediate hosing for easy assembly
- Leak indicator weep hole for fast visual inspection
- Simple coupling & quick disassembly
- Large foot valve (Ø20, Ø14) to handle high viscosity materials up to 5,000 cPs - carbide seat

Sustainability

- Differential air motor for a stall-free system
- Quick reversing valve to eliminate pump surge
- Ice-free air motor
- 50% fewer parts vs competition, less spare parts required
- GT cartridge:
 - no throat packing maintenance
 - low friction
 - flat cartridge body design to eliminate dead zones for easy flushing
- Ultra chrome-plated piston for reduced friction and high abrasion resistance, extending pump lifespan
- Exhaust valve (upper) has large passages and carbide seat

Kits

Designation	Part number
Airmix® PACK 15C50 W/M FILTER SUC Xcite®+Light120 12.114 H7.5M	151143600
PACK 15C50 2G W/M MBA SUC D25+FIL 2/XCITE®+120+2/09114+2/H7.5	151143650
KIT 15C50 WALL/M PMP & ROD & XCITE®+120 & TWIST SWIVEL	151265050
KIT 15C50 WALL/M WO ROD & FILTER & XCITE®+120 & TWIST SWIVEL	151265052
KIT 15C50 WALL/M +ROD & FILTER & XCITE®+120 & TWIST SWIVEL	151265053

Accessories

Designation	Part number
Stainless steel drain rod Ø16 elbowed F18 x 125	049596000
Stainless steel Suction rod Ø23 plunging tube length elbowed 570 mm M26x125	149596150
Stainless steel Suction rod Ø23 plunging tube length 1000mm elbowed (for 200 liters drums) M26x125	149596160
PUMP AIR EQUIPMENT + AIR&PRODUCT 2 GUN MAMANGEMENT MANIFOLD	151140090
PUMP AIR EQUIPMENT + AIR 2 GUN MANAGEMENT WO PRODUCT	151140095
Gravity hopper 6 liters	151140230
Wall-mounted totem	151140240
Dismountable trolley	151241000
Fluid filter Mesh 6 3/8 (Inlet F1/2"JIC - Outlet M1/2"JIC)	155580600

Spare parts

Designation	Part number
Reversing kit	144130191
GT Cartridge kit	144135205
Servicing kit C50 fluid section	144135237
MB-A Cartridge kit	144135365
Servicing kit for 245-4 air motor	144140190

Equipment

Designation	Part number
Wall mounted 15C50 F 1/2 BSP with Air plate	151143000
Wall mounted 15C50 M26x125 with Air plate	151143050
Wall-mounted 15C50 with filter and rods	151143250
Wall-mounted 15C50 with filter	151143450
AIRLESS PUMP 15C50 W/M INLET F1/2 W/O SUCT ROD W/O FILTER	151143500
System, 15C50, W/M, C/W Xcite 120, 5G Rod, Filter, 25Ft.	668-143-000
System, 15C50, W/M, C/W Xcite 120, 5G Rod, Filter, 50Ft.	668-143-001
System, 15C50, W/M, C/W Xcite 120, 6L Hopper, Filter, 25Ft.	668-143-002
System, 15C50, W/M, C/W Xcite 120, 6L Hopper, Filter, 50 Ft.	668-143-003
System, 15C50, C/M, C/W Xcite 120, 5G Rod, Filter, 25Ft.	668-143-100
System, 15C50, C/M, CW Xcite 120, 5G Rod, Filter, 50Ft.	668-143-101
System, 15C50, C/M, C/W Xcite 120, 6L Hopper, Filter, 25Ft.	668-143-102
System, 15C50, W/M, C/W Xcite 120, 55G Rod, Filter, 25Ft.	668-143-200
System, 15C50, W/M, C/W Xcite 120, 55G Rod, Filter, 50Ft.	668-143-201
System, 35C50, C/M, C/W Xcite 200, 6L Hopper, Filter, 50Ft.	668-148-103

Additional information

- User manual
- Spare parts
- Accessories
- Documents
- Videos

