



04D140

Diaphragm pump

Ultimate high performance, compact designed circulation pump

Product highlights

- Perfect for frequent color changes
- Reliable and sustainable
- Low cost of ownership



BOND • PROTECT • BEAUTIFY

04D140

Diaphragm pump

The 04D140 pneumatic, double diaphragm pump is designed for low-pressure circulating systems with a ratio of 3.5:1. These pumps will deliver high performance and durability.



Adapted industrial markets



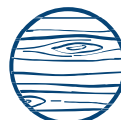
ACE*



Industrial



Transportation



Wood



Technical data table

Designation	Value	Unit
Maximum Air Pressure	6 (87)	bar (psi)
Maximum Viscosity	15000	cps
Pump displacement	140 (8.54)	cc/cycle (in ³ /cycle)
Fluid Output at 20 cycles / mn	2,80 (0.70)	l/min (gal/min)
Fluid Output at 60 cycles / mn	8,40 (2.20)	l/min (gal/min)
Free Flow Rate	50 (13.20)	l/min (gal/min)
Number of cycles per liter of products	7	
Height	251 (9.90)	mm (in)
Width/depth	232 (9.10)	mm (in)
Depth	261 (10.30)	mm (in)
Length	232 (9.10)	mm (in)
Maximum Material Pressure	21 (304)	bar (psi)
Pressure ratio	3.5/1	
Weight	15 (33)	kg (lbs)
Maximum Temperature	65 (149)	°C (°F)
Power Source	Pneumatic	
Sound Level	67	dba
Certification	II 2 G Ex h IIB T6-T4 Gb X	
Pump Type	Diaphragm low pressure	
Air Inlet Fitting	F 1/2" G	
Material Inlet Port	F 3/4" BSP	
Material Outlet Port	F 3/4" BSP	
Wetted Parts	PTFE, Stainless steel 303	

Marking

Product	Type
04D140	CE 0080  II 2 G Ex h IIB T6-T4 Gb X

*: "AgricultureConstruction and Earthmoving"



Technologies



Diaphragm



Description

04D140 is the new pneumatic, double diaphragm pump from Sames designed for low-pressure circulating systems, capable of feeding multiple guns. Sames is proud to introduce the new 3.5:1 pump into our low-pressure range of pumps.

This pump benefits from a compact design making it very easy to integrate into paint systems.

Its advanced construction guarantees fast flushing making the pump perfectly adapted for fast color change systems.

Performances

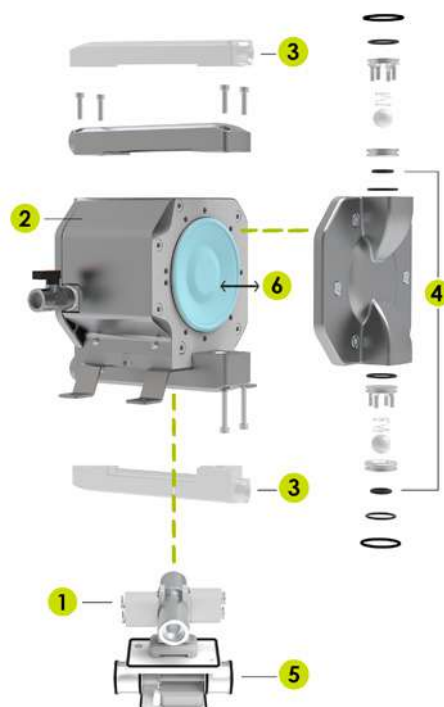
- 1 Low shear technology due to diaphragm short stroke
- 2 - Compact, light and modular for easy integration
- Low noise pollution due to cutting edge design with integrated silencer

Productivity

- 1 High flow rate due to a short-stroke high frequency diaphragm
- Quick and easy flushing for fast and frequent color changes
- Easy flushing due to optimized designed fluid chamber
- Compatible with piggyback circulation systems

Sustainability

- 2 Durable pump, all stainless steel body, ceramic pneumatic valve and long-lasting PTFE diaphragms
- 3 - Advanced soft seat design minimizes paint shearing
- Low & easy maintenance (easy access to wearing parts, long-life diaphragm)



Accessories

Designation	Part number
Fitting M3/4 M26x125 SST	050102445
Stainless steel Suction rod Ø23 plunging tube length elbowed 570 mm M26x125	149596150
Stainless steel Suction rod Ø23 plunging tube length 1000mm elbowed (for 200 liters drums) M26x125	149596160
Rod, suction, 5Gal, Easy Flush	149-596-050
Rod, Suction, 5Gal, Easy Flow	149-596-150
Rod, Suction, 55 Gal, 26/125	668-595-100
Fitting, M/M, S/S, 26/125 X 3/4 NPT	669-102-407

Spare parts

Designation	Part number
Diaphragm kit for 04D140	144907021
Ball valve kit for 04D140	144907022
Seals and Springs kit 04D140	144907023
Pneumatic valve kit for 04D140	144907024
Pneumatic seals kit for 04D140	144907028

Equipment

Designation	Part number
Pump 04D140	144907020



Additional information

[• User manual](#)[• Spare parts](#)[• Accessories](#)[• Documents](#)[• Videos](#)